

Madvac[®] LS175 – The ‘must-have’ mini sweeper for your fleet

Specifically designed to handle all the areas your large street sweeper can't access or manage.

Sweep narrow locations that have various obstacles and different surface types:

- Area: sidewalks, bike and pedestrian lanes, parking lots, curb side, alleys, public markets, alongside buildings, pathways, etc.
- Obstacles: bus shelters, lamp posts, benches, fire hydrants, etc.
- Paving type: asphalt, concrete, brick.

LS175 is the ultimate sweep / vacuum / wash mobile cleaning unit for:

- Cities & municipalities
 - Transit authorities
 - Distribution centers
 - Shopping malls
 - Educational and sports facilities
 - Industrial areas
 - Airports
 - Casinos
 - Amusement parks
 - Seaports
 - Military
- **Safe & easy to use** – Does not require a CDL. Simple ergonomic controls, all-round visibility, safe to drive in crowded areas – anyone can operate this machine.

Built To Suit Your Needs

Configure the LS175 according to your specific litter control application(s)

- Hopper size 1.75 CY (353 US Gal.) to optimize route and autonomy;
- In cab AC and heater control for operator comfort (option);
- Wander hose for hard to reach areas (option);
- Pressure washer 1500 PSI for additional cleaning (option);



The Madvac Advantage

LS175 is the ONLY 48" wide, closed-cabin, high dump sweeper built in North America

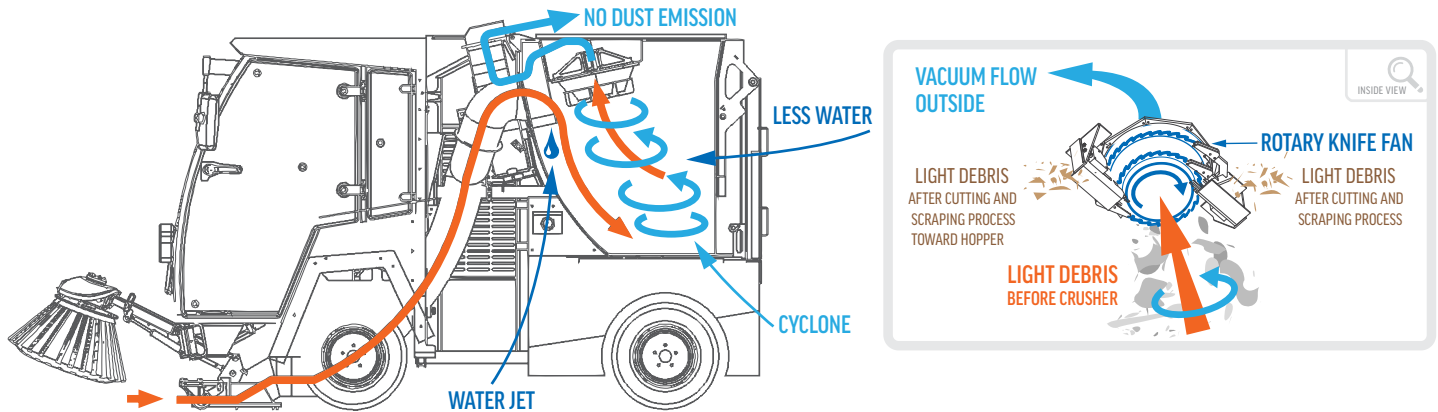
- Specifically designed for North American standards;
- 10 to 12-year lifespan;
- OEM parts shipped within 48 hours;
- Dealer network across the United States and Canada;
- Sourcewell (formerly NJPA) awarded contract vendor (#122017-EXP);



Contract # 122017-EXP

New Innovative Dust & Debris Filtration System

Dust control performed by water jet on each brush with **no dust from the hopper** due to unique **Madvac RDDF System** (Rotary Debris & Dust Filtration)[®] Centrifugal 1200 RPM rotary knife pulverizing dust & litter before exhausting maximum 10 PPM dust emission.



Madvac LS175 Highlights

Performance

- High-capacity 1.75 cu. yd. (1.34 m³) stainless steel hopper with 67" (1702 mm) hydraulic dumping height;
- Narrow 48" (1219 mm) wide frame to access and clean hard to reach areas;
- Low overall height 78" (1981 mm) ideal for tree-lined roads and parking garages (86" if with Air Sound Muffler for noise reduction);
- Vacuum power 3000 CFM;
- Travel speed up to 18 Mph (30km) – working speed up to 10 Mph (16km) for clean and fast sweeping;
- Fully street legal lighting package.

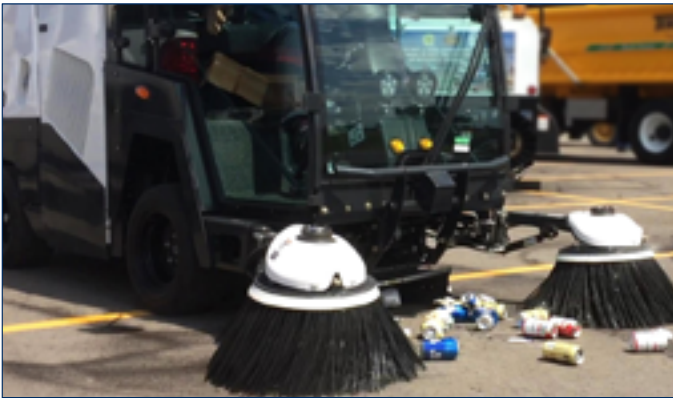
Maintenance

- Simple mechanical design for less annual maintenance and repair;
- Straight-through suction system;
- Side-mounted fan makes it impossible for litter to jam the fan;
- Easy access to electrical panel and hydraulic routing.

Operator

- Superior handling, stability, curb-climbing capability;
- 58-gal (220L) water capacity for fewer fill-ups and longer shifts;
- Brush rotation & down pressure controlled from cab (option);
- 200-degree cab vision with glass doors;
- Adjustable suspended air seat with 3-point seat belt;
- Adjustable arm rest with illuminated switches;
- Sweeper brushes independently controlled from cab;
- Single traction pedal – neutral, forward & reverse (no shifter).





Madvac® LS175 Data and Performance Information

Capacities		Sweep Gear	
Fuel Tank	21.1 Gal. (80 L)	Brushes	Two brushes (independently joy-stick controlled) 25 inches DIA each (635 mm) Polypropylene
Hydraulic System	23.7 Gal. (90 L)	Sweeping Width	From 44" (1118 mm) to 100" (2540 mm)
Litter Capacity	1.75 Cu. Yd (1.34 m³) (353 US Gal.)	Pick Up Nozzle	Hydraulic raise/lower and polymer skate
Water Capacity	58 Gal. (220 L)	Brush Speed	0 RPM to 150 RPM
Engine Data Tier 4 Final		Brush Arm	Self leveling and self adjustable for brush wear
Model	Hatz engine 3H50TIC 3 cyl. Turbo with CAC / DOC only	In Cab	Brush speed & down pressure – (option)
Displacement	91.54 cubic in. (1500 cc)	Electrical	
Gross Rated Power	56.2HP (42.0kW) and CARB / 48.8HP (36.4 kW) @ 2800RPM	Voltage	12 Volts, 80 AMP alternator / Heavy duty battery
Air Cleaner	2 stage Donaldson with restriction indicator	Lighting	
Litter Collection System		Lighting	2 headlights, brakes, turn signals, taillights 4-way flashers, 4 amber strobes, 4 work lights
Type	Cyclonic 3 stage filtrations	Instruments	
Frame / Body	Triangular frame tubing ¼ in. (6 mm)	Instruments	Fuel gauge, hour meter, oil pressure light, water temperature light, battery light & engine light, Radio, CD, MP3 player (option) Color back-up camera with 7" monitor – (option)
Container Material	Stainless steel	Cab	
Dumping Height	67 inches (1702 mm)	Cab	Forward design, 200 degree cab vision
Container Payload	2000 lbs (907 kg)	Windshield	Full windshield
Power Wash	Pressure washer 1500 PSI (103.4 BAR) – (option)	Windows	Side windows open each side
Vacuum System		Light	Dome light
Vacuum Rating	3000 CFM	Doors	Full view glass tempered doors
Air Flow Speed	8,400 ft./min	Heating / AC	HVAC unit – (option)
Static Pressure	30" of water gauge (7.472 KPA)	Defrost	Windshield heated micro filament – (option)
Remote Vacuum	6" (153 mm) X 15' (4572 mm) stowed Wander hose – (option)	Seat	Adjustable air vinyl seat with arm rest
Traction		Dimensions	
Drive	Front wheel drive	Width	48" (1219 mm)
Forward Speed	18.6 mph (30 Km/H)	Length	136" (3454 mm)
Tires	Radial 225 R 12	Height	78" (1981 mm) – 86" with Air Sound Muffler – (option)
Brakes	Front hydrostatic brakes / Rear mechanical parking disk brakes	Wheelbase	65" (1651 mm)
Grade	Grad ability 25%	Ground Clearance	8.5" (216 mm)
Curb Weight	Dry 5500 Lbs (2,495 Kg)	Hydraulic System	
Weight Distribution	Front 45% / Rear 55%	Hydraulic Cooler	Electric fan cooled
Suspension		Steering	Automotive type, power assisted
Front	Axial coil springs / Heavy duty shock absorbers	Drive System	Heavy duty hydrostatic drive
Rear	Longitudinal coil springs / Heavy duty shock absorbers		



PROUD MANUFACTURER OF THE MADVAC PRODUCT LINE

Headquarters: Toll Free **1 855 651-0444**
 2170, De La Province Tel. 450 651-0444
 Longueuil (Quebec) Fax. 450 651-0447
 CANADA J4G 1R7

www.madvac.com

