

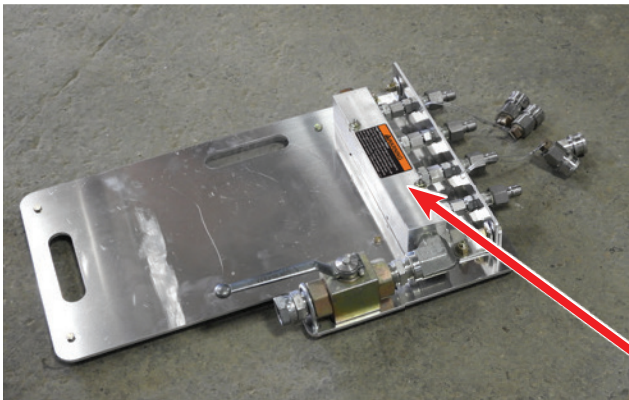
Vactor Multi Connection Water Manifold

Compatible with the following trucks:

Vactor 2100 Classic, 2100 Plus, 2100i, 2103, Impact, Jetter, Jetter 850, Ramjet

Note:

- Vactor 2100 Classic and Jetter
Must have the Multi-Flow Option
- Vactor 2100 Plus and Jetter 850
Must use in Low Pump Mode only
- Always set rodder pump to OFF before relocating manifold. Do not drag manifold on ground by hoses. Carry it to desired location.
- Secure manifold to ground with minimum 100lbs of sandbags
- All handguns, hoses, fittings must be rated for minimum of 3000 psi



NOTICE

High Water Pressure Can Increase Wear

Always adjust multi-flow water pressure at or below the water system rating. Exceeding system rating may result in excessively high hydraulic oil temperature and premature component wear.

WARNING

Cancer and Reproductive Harm

Required for compliance with California Prop 65. Refer to: www.P65Warnings.ca.gov

NOTICE



Follow recommended safety practices while performing all work. Refer to the FS Solutions/Guzzler/Vactor/TRUVAC/Westech Safety Manual for additional information.

This manual is available at: www.vactor.com

WARNING

High Pressure Water

High pressure water can cause serious injury or death.



- Wear appropriate safety equipment, including face shield and safety goggles, safety gloves and safety toe boots. Waterproof apparel is preferred.
- Never allow the nozzles to point at or near a person or animal.
- Bleed pressure from the system by shutting off pressure and activating the system.

WARNING

High Pressure Water

To avoid injury or death handguns must be rated for 3000 PSI. Never modify or remove flow control orifices. Ensure remote control is functioning and with line of sight to the truck. Truck operator must have line of sight to the workers. Always secure the device to the ground with minimum 100lbs of sandbags. 512974 r0

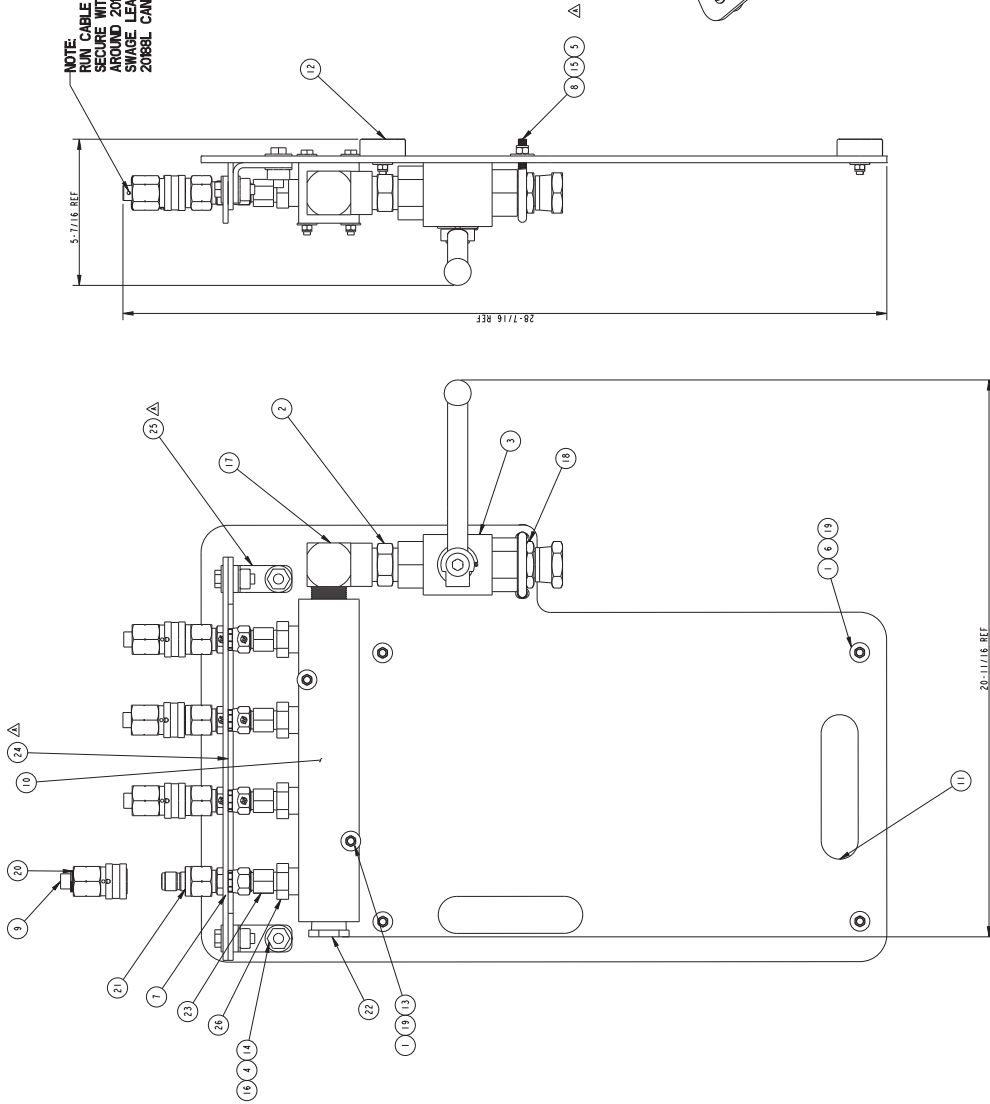
Follow the operating and safety instructions of that third-party product manufacturer for its equipment. Additionally, all safety, use instructions and warnings provided by Vactor in its operations manuals, safety manuals, this bulletin, and otherwise must also be strictly followed. Vactor makes no representations or warranties in any respect regarding this modification or its effectiveness for any covid-19 purpose. It is your responsibility to evaluate the safe and effective use of this modified Vactor truck for any sanitizing or cleaning purpose. This modification is not intended for any other Vactor model or any competitor's truck.

For assistance contact Vactor Technical Service at: (877) 342-5374

Vector Multi Connection Water Manifold

ITEM	PART NO	DESCRIPTION	QTY	REF
1	16364	FLAT WASHER 1/4" Z/C	12	REF
2	40246	ADAPT. HD. 1/8NPTX1/8NPT STR	1	
3	40216	BALL VALVE 1" 5000 PSI	1	
4	142106	HMS 3/8-16NC X 1 1/4	4	REF
5	14210	HEX NUT FIBRE LOCK 5/16-16NC	2	REF
6	43248	1/4-20NC X 1	4	REF
7	14192	ADAPT. HD. 8NPTX1/8NPTX1/8NPT STR	4	REF
8	48808	U-BOLT 5/16-18 X 1-1/2 X 2-1/16	1	REF
9	16327	PLUG MOD. 1/2NPT. W/ HOLE	4	
10	512978	WATER MANIFOLD	1	
11	512930	MANIFOLD MOUNTING PLATE	1	
12	132137	RUBBER BUMPER W/ CENTER HOLE	4	REF
13	16335L	1/4-20NC X 3	2	REF
14	163630	LOCK NUT 3/8"	4	REF
15	16365A	WASHER, FLAT, USS. 5/16, Z/C	2	REF
16	16365B	WASHER, FLAT, USS. 3/8, Z/C	8	REF
17	164790	ADAPT. HD. 1/8NPTX1/8NPT STR	1	
18	164980	ADAPT. HD. 1/8NPTX1/8NPT STR	1	
19	201216	HEX NUT FIBRE LOCK 1/4-20NC	6	REF
20	20188C	RODICE CONNECT SS 1/2 F SLEEVE LOCK	4	
21	20188N	RODICE CONNECT SS 1/2 N EMPTY	4	
22	2985E	PIPE PLUGS, PLATED, 1 NPT	1	
23	512031A	HANGON ORIFICE FITTING	4	
24	512950A	SUPPORT PLATE, AL	2	
25	15824A	MOUNTING STRAP, ZINC	2	
26	703380	8 JIC X 12 NPT STR	4	
**	40233	SWAGE (NOT SHOWN)	8	REF
**	40232	CABLE (NOT SHOWN)	4	REF
**	512974	DECAL (NOT SHOWN)	1	

NOTE
 RUN CABLE THROUGH 65827 PLUG AND SECURE WITH SWAGE LOCK WITH END AROUND 20888 AND SECURE WITH SWAGE. LEAVE ENOUGH SLACK SO THAT 20888L CAN BE REMOVED.



PICTORIAL VIEW
 SCALE 3/8

REV	REVISION	BY	DATE	FORM	DRG. IN. INCHES	REV	BY	DATE
A	MANIFOLD SYSTEM MODIFIED, ONE GLL 142070 88513				UNRENDERED			
					ENGINEERING			
					DESIGN			
					INSPECTION			
					MANUFACTURING			
					FIELD SERVICE			
					SALES			
					TRAINING			
					RESEARCH & DEVELOPMENT			
					QUALITY CONTROL			
					FINANCE			
					PERSONNEL			
					LEGAL			
					PLANT			
					WORKS			
					OFFICE			
					RESEARCH			
					TRAINING			
					SALES			
					RESEARCH & DEVELOPMENT			
					QUALITY CONTROL			
					FINANCE			
					PERSONNEL			
					LEGAL			
					PLANT			
					WORKS			
					OFFICE			
					RESEARCH			
					TRAINING			
					SALES			
					RESEARCH & DEVELOPMENT			
					QUALITY CONTROL			
					FINANCE			
					PERSONNEL			
					LEGAL			
					PLANT			
					WORKS			
					OFFICE			
					RESEARCH			
					TRAINING			
					SALES			
					RESEARCH & DEVELOPMENT			
					QUALITY CONTROL			
					FINANCE			
					PERSONNEL			
					LEGAL			
					PLANT			
					WORKS			
					OFFICE			
					RESEARCH			
					TRAINING			
					SALES			
					RESEARCH & DEVELOPMENT			
					QUALITY CONTROL			
					FINANCE			
					PERSONNEL			
					LEGAL			
					PLANT			
					WORKS			
					OFFICE			
					RESEARCH			
					TRAINING			
					SALES			
					RESEARCH & DEVELOPMENT			
					QUALITY CONTROL			
					FINANCE			
					PERSONNEL			
					LEGAL			
					PLANT			
					WORKS			
					OFFICE			
					RESEARCH			
					TRAINING			
					SALES			
					RESEARCH & DEVELOPMENT			
					QUALITY CONTROL			
					FINANCE			
					PERSONNEL			
					LEGAL			
					PLANT			
					WORKS			
					OFFICE			
					RESEARCH			
					TRAINING			
					SALES			
					RESEARCH & DEVELOPMENT			
					QUALITY CONTROL			
					FINANCE			
					PERSONNEL			
					LEGAL			
					PLANT			
					WORKS			
					OFFICE			
					RESEARCH			
					TRAINING			
					SALES			
					RESEARCH & DEVELOPMENT			
					QUALITY CONTROL			
					FINANCE			
					PERSONNEL			
					LEGAL			
					PLANT			
					WORKS			
					OFFICE			
					RESEARCH			
					TRAINING			
					SALES			
					RESEARCH & DEVELOPMENT			
					QUALITY CONTROL			
					FINANCE			
					PERSONNEL			
					LEGAL			
					PLANT			
					WORKS			
					OFFICE			
					RESEARCH			
					TRAINING			
					SALES			
					RESEARCH & DEVELOPMENT			
					QUALITY CONTROL			
					FINANCE			
					PERSONNEL			
					LEGAL			
					PLANT			
					WORKS			
					OFFICE			
					RESEARCH			
					TRAINING			
					SALES			
					RESEARCH & DEVELOPMENT			
					QUALITY CONTROL			
					FINANCE			
					PERSONNEL			
					LEGAL			
					PLANT			
					WORKS			
					OFFICE			
					RESEARCH			
					TRAINING			
					SALES			
					RESEARCH & DEVELOPMENT			
					QUALITY CONTROL			
					FINANCE			
					PERSONNEL			
					LEGAL			
					PLANT			
					WORKS			
					OFFICE			
					RESEARCH			
					TRAINING			
					SALES			
					RESEARCH & DEVELOPMENT			
					QUALITY CONTROL			
					FINANCE			
					PERSONNEL			
					LEGAL			
					PLANT			
					WORKS			
					OFFICE			
					RESEARCH			
					TRAINING			
					SALES			
					RESEARCH & DEVELOPMENT			
					QUALITY CONTROL			
					FINANCE			
					PERSONNEL			
					LEGAL			
					PLANT			
					WORKS			
					OFFICE			
					RESEARCH			
					TRAINING			
					SALES			
					RESEARCH & DEVELOPMENT			
					QUALITY CONTROL			
					FINANCE			
					PERSONNEL			
					LEGAL			
					PLANT			
					WORKS			
					OFFICE			
					RESEARCH			
					TRAINING			
					SALES			
					RESEARCH & DEVELOPMENT			
					QUALITY CONTROL			
		</						

Vactor Multi Connection Water Manifold

3/25/2020

PNEUMADYNE INC Manifold, 1" Inlet Size, 3/4" Outlet Size, NPT, Aluminum, 12" Overall Length - 49AV72|M40-750-4 - Grainger

[Product Categories](#) / [Plumbing](#) / [Pipe, Tubing and Fittings](#) / [Manifolds](#) / [Pipe Manifolds](#) / [Manifold, 1" Inlet Size, 3/4" Outlet Size, N...](#)

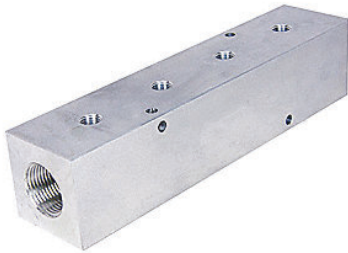
[Print](#)

[Email](#)

PNEUMADYNE INC

Manifold, 1" Inlet Size, 3/4" Outlet Size, NPT, Aluminum, 12" Overall Length

Item # 49AV72 Mfr. Model # M40-750-4 Catalog Page # 2852 UNSPSC # 27131601



Web Price ⓘ

\$103.50 / each

1

Add to Cart

[+ Add to List |](#)

Confirm ZIP Code to determine availability.

60449

Save

Shipping Weight 4.48 lbs.

Country of Origin USA | *Country of Origin is subject to change.*

Note: Product availability is real-time updated and adjusted continuously. The product will be reserved for you when you complete your order. [More](#)



CAD Downloads

STEP (.stp) ▾

Download

[How can we improve our Product Images?](#)

Compare

Product Details

Ideal as a convenient junction point for lower pressure applications using air, water, or other compatible media, this PNEUMADYNE INC manifold is easy to install. Just thread fittings into the ports to produce an orderly method of supplying multiple lines from a single source. Model comes with 2 sets of mounting holes to ease installation.

[View Less](#) ^

Technical Specs

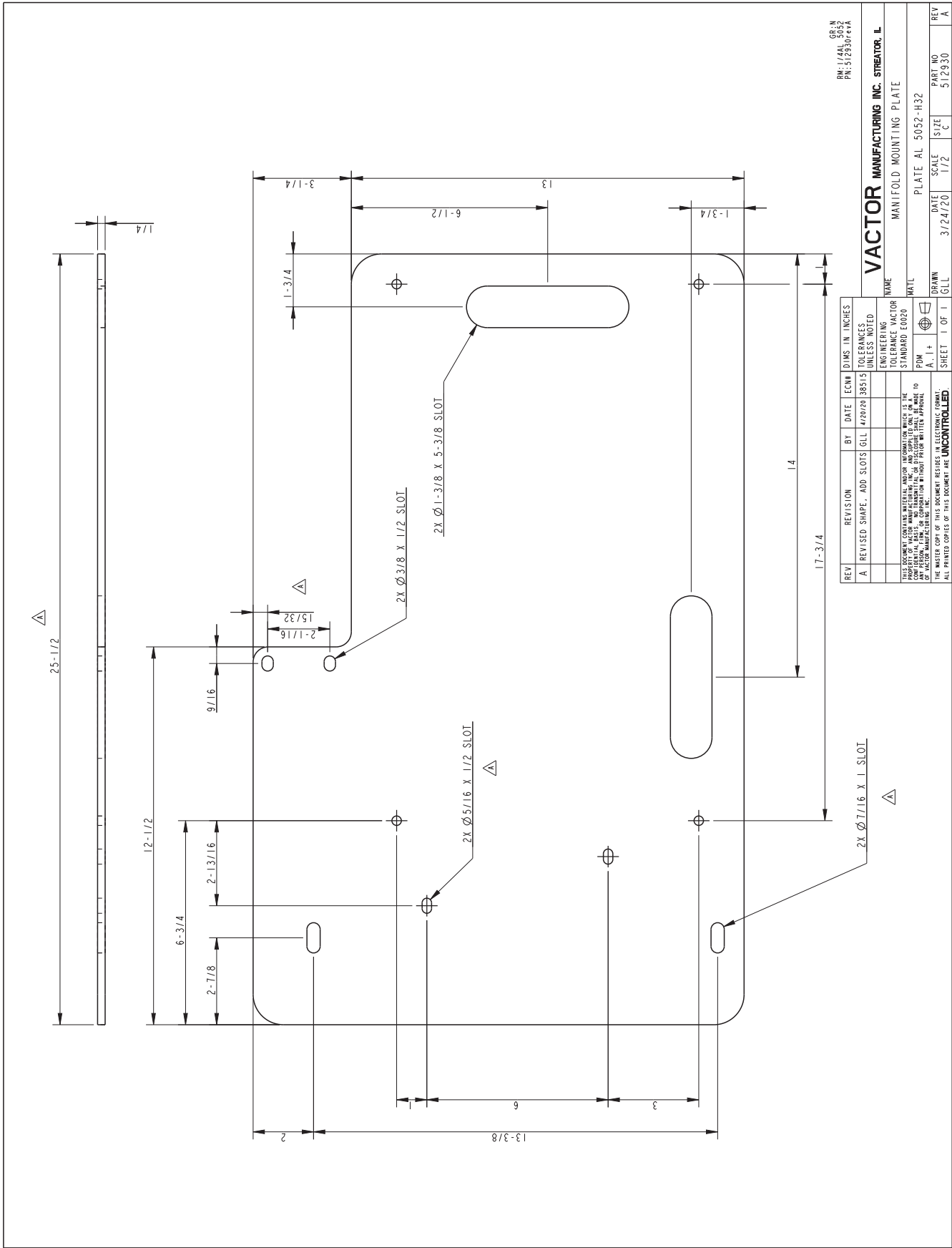
Item	Manifold	Overall Width	2-1/4"
Pipe Fitting Material	Aluminum	Overall Height	2-1/4"
Number of Inlets	2	Fitting Connection Type	NPT
Number of Outlets	4	Max. Pressure	3000 psi
Inlet Size	1"	Mounting Hole Size	0.26"
Outlet Size	3/4"	Temp. Range	-10 Degrees to 200 Degrees F
Overall Length	12"		

[Chat with an Agent](#)

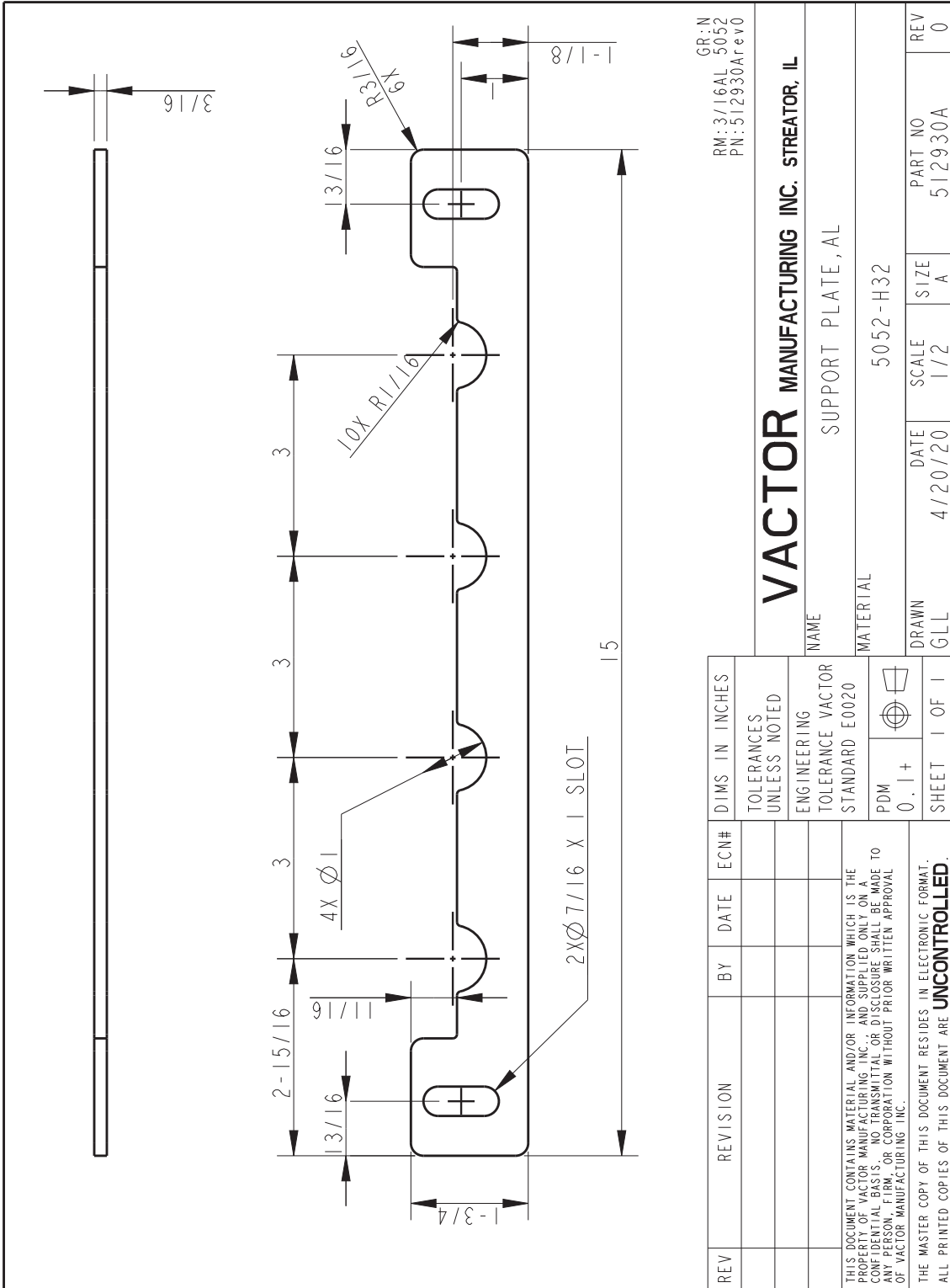
https://www.grainger.com/product/PNEUMADYNE-INC-Manifold-49AV72?breadcrumbCatId=CC_1041_1001012_1000249_15071

1/2

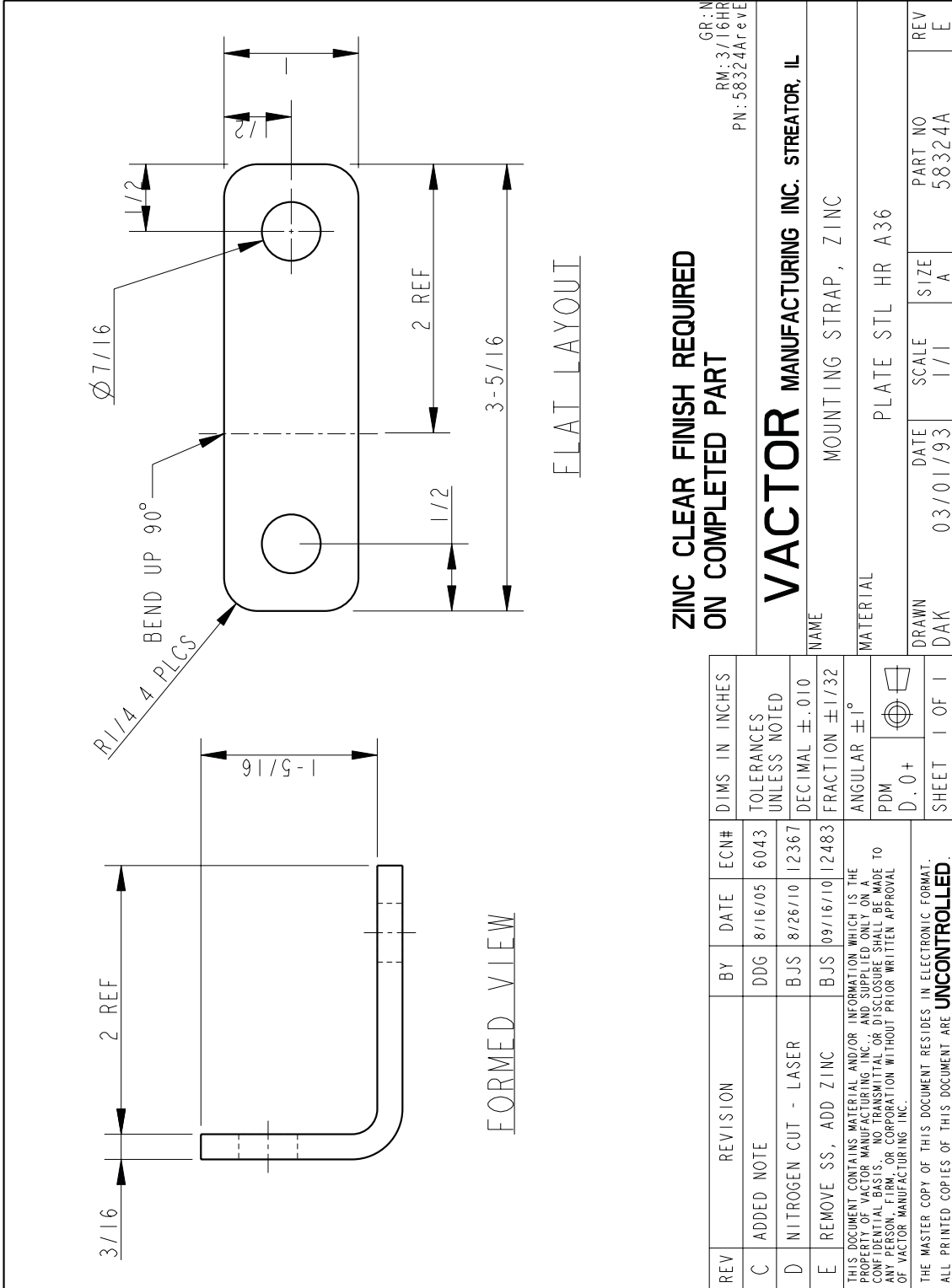
Vector Multi Connection Water Manifold



Vector Multi Connection Water Manifold



Vactor Multi Connection Water Manifold



ZINC CLEAR FINISH REQUIRED
ON COMPLETED PART

GR: N
RM: 3/16HR
PN: 58324A rev E

VACTOR MANUFACTURING INC. STREATOR, IL

NAME	MOUNTING STRAP, ZINC		
MATERIAL	PLATE STL HR A36		
DRAWN	DATE	SCALE	PART NO
DAK	03/01/93	1/1	58324A
REV	SIZE	REV	E

REV	REVISION	BY	DATE	ECN#	DIMS IN INCHES
C	ADDED NOTE	DDG	8/16/05	6043	TOLERANCES UNLESS NOTED
D	NITROGEN CUT - LASER	BJS	8/26/10	12367	DECIMAL ± .010
E	REMOVE SS, ADD ZINC	BJS	09/16/10	12483	FRACTION ± 1/32

THIS DOCUMENT CONTAINS MATERIAL AND/OR INFORMATION WHICH IS THE PROPERTY OF VACTOR MANUFACTURING INC. AND SUPPLIED ONLY ON A CONFIDENTIAL BASIS. NO TRANSMITTAL OR DISCLOSURE SHALL BE MADE TO ANY PERSON, FIRM, OR CORPORATION WITHOUT PRIOR WRITTEN APPROVAL OF VACTOR MANUFACTURING INC.

THE MASTER COPY OF THIS DOCUMENT RESIDES IN ELECTRONIC FORMAT. ALL PRINTED COPIES OF THIS DOCUMENT ARE **UNCONTROLLED**.

PDM	ANGULAR ± 1°		
D.0+	SHEET 1 OF 1		