



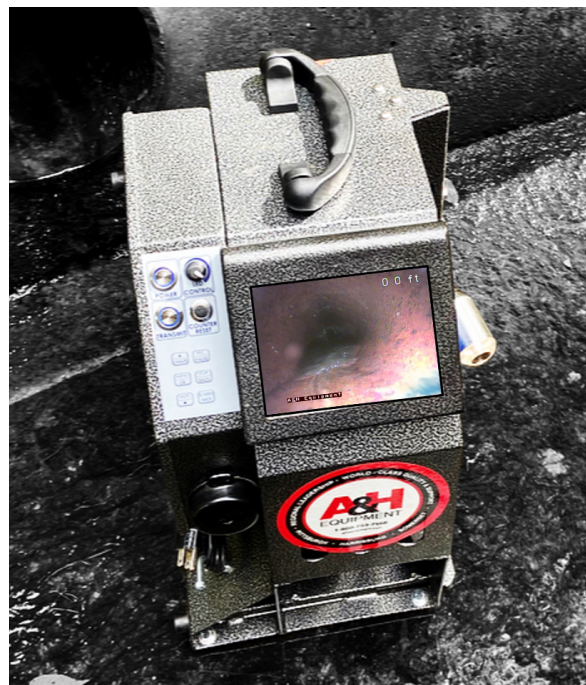
# USER GUIDE FOR A&H PUSH CAMERA

Please read these instructions and do a **TEST RECORDING** before you perform your first inspection in the field.

Inspect your system carefully upon receipt. Let us know right away of any damage you note.

Included with your purchase are:

- Removable USB (flash) drive
- WiFi Router (dongle) to enable wireless connection to your phone or tablet (with our Viewer APP). Plug in to USB port, see separate instructions for using Viewer APP.
- 3 sizes Ice Balls
- Mini SnoBall
- 2 camera interchangeable camera heads and dielectric grease



## CONTROL PANEL

**POWER**  
Give the unit 30 seconds to fully boot up (*MyTana logo will show when unit is ready to operate*)

**Blinking Blue light indicates low battery.**  
It will blink for 5-10 minutes before battery fails. Plug unit in to standard wall outlet to recharge.

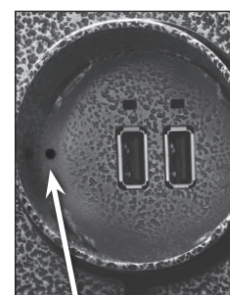
**TRANSMIT**  
Generates 512hz signal at camera head (has nothing to do with Wi-Fi)



**LED CONTROL**  
Full clockwise = full brightness

**COUNTER RESET**  
Resets on-screen footage counter to zero

## USB PORTS



Microphone



Use these CONTROL PANEL buttons for recording and working with files. See next pages.

**FIRMWARE VERSIONS** These instructions are current for MyTana Firmware ver. 1755. Older versions may have slightly different options in the menu screens. To find your system's version, make these selections on-screen:

- Main Menu
  - > Setup
    - > System Information
      - > Firmware

# USER GUIDE FOR A&H PUSH CAMERA

## Operating the System

### BASICS

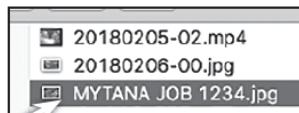
Be sure to refer to back page of this manual for more basic information about using your system.

We strongly recommend doing a test recording **BEFORE** you perform your first inspection in the field.

**FILES** — In this manual, the term “Files” refers to your recordings, whether video (.mp4) or snapshots (.jpg)

**File Naming:** By default, recording files are named with the date (YYYYMMDD) and a numbering sequence (-XX)

ex: **20180205-02.mp4** – this would be the third video recorded on Feb. 5, 2018 (first file will be “-00”, second “-01” etc.)




You can customize the names of files in the File Management menu, requires a USB keyboard.

\* See the “Using a USB Keyboard” instructions for **important details** about this process, or you may lose your recording.

**STARTUP** — Push the POWER on. Blue light around switch will glow. Wait about 30 seconds for MyTana logo to appear.

### RECORDING VIDEO

1. Push REC/PAUSE
2. Use the Control Panel arrow buttons  to choose the drive you want to record to: Internal, External or Both. If external, be sure to insert USB (flash) drive in USB port.  
*You can copy or move recordings to a different drive later. (see File Management menu selections next page)*
3. Push MENU/OK to start recording. Red dot appears on screen and timer will start.
4. Push STOP/BACK to stop recording.

### AUDIO

MUTE is the default setting for recording, meaning NO sound will be recorded (MUTE is ON if you see “MUTE” on the screen). NG2 units **have no speaker for playback**, so sound can only be heard when playing back on a computer.

#### To Record Sound

Push UNMUTE and “MUTE” will disappear from the screen, the built-in microphone is now active.

**Remove the dongle/router to prevent sound interference** if recording to either Internal drive or external USB drive

### TO TAKE STILL SHOTS

Press the SCREEN SHOT button if you want still shots, (not available while recording video)


### WIRELESS STREAMING

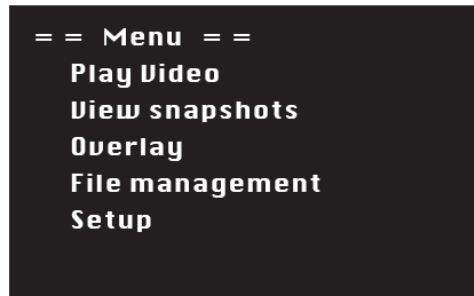
See our Viewer APP instruction sheet for WiFi operations.

### MAIN SCREEN MENU

Push MENU/OK on the control panel to bring up the Main Menu on the screen.

Use the arrow  buttons on the control panel to toggle to / select any menu item

Push  repeatedly to exit any menu and return to previous screens.



<b>Play Video</b>	Lets you select the drive that you recorded to, Internal or External, and view the recordings.  Use the ▲▼ buttons on the control panel to FAST FORWARD or REWIND recordings during playback.
<b>View Snapshots</b>	Lets you see static (.jpg) images, if you took snapshots rather than full video.
<b>Overlay</b>	Lets you to add, change or move the overlays that appear on videos or images.  Most features require a USB Keyboard – see separate instruction sheet for details.
<b>File Management</b>	Which is where you can move, copy, delete or rename files. See more – opposite page
<b>Setup</b>	You can time and date in the unit. Your unit will arrive preset, but if you wish to reset or change the time, follow the instructions on back page.



# USER GUIDE FOR A&H PUSH CAMERA

## FILE MANAGEMENT MENU

Copying or Moving files requires 2 drives. The screen below shows when there is an external drive inserted in one of the USB ports. If an external drive is NOT inserted, this menu will only show: **Delete files from internal**, and **Select files: Individual**

With a flash drive inserted, the File Management menu gives you options to **COPY** or **Delete** files from the internal drive or an external USB drive.

You can change the COPY option to **MOVE** \* (see below)

### IMPORTANT!

**COPYING** files *duplicates* file(s) from one drive (internal or external) to another. Recommended.

- ▶ The file(s) **remain** in the original location

**MOVING** files *transfers* file(s) from one drive to another.

- ▶ The file(s) are then **DELETED AUTOMATICALLY** from the former location.  
Do this procedure with caution.

### To change COPY to MOVE:

Use the ▲▼ buttons to move cursor to  
> **Toggle Copy or Move**

Press MENU/OK

Menu items will change to "Move video from..." etc.

Push  button repeatedly to return to previous screen.

*\*The Move function and working with a Group of files is for Firmware ver. 1755. Older versions will not have these options.*

```

= = File Management = =
Copy video from internal
Copy video from external
Copy snapshots from internal
Copy snapshots from external
Delete files from internal
Delete files from external
Toggle Copy or Move
Select files : Individual
    
```

Connecting a USB keyboard will also show an option to **Rename files**. Please read instructions for how to do this, otherwise you may lose your recording.

The default menu is also setup to work with a single file (**Individual**)

You can change Individual to **GROUP** \* so you can select multiple files to move, copy or delete (see below)

### To change INDIVIDUAL to GROUP

Use the ▲▼ buttons to move cursor to  
> **Select Files: Individual**

Press MENU/OK

Menu changes to "Select Files: Group"

Push  repeatedly to return to previous screens.

## COPY, MOVE or DELETE files

Copying or Moving files from a selected drive automatically chooses the other drive as the destination.

Remember, you must have a flash drive inserted in the USB port to Copy or Move files.

Use the ▲▼ buttons to move the cursor to the function you want to do

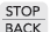
Press MENU/OK

Since the menu is set to **Individual**, the next steps apply to working with a single file. See right for working with multiple files.

Use arrow buttons to move the cursor to select the file you want to Copy (or Move or Delete)

Press MENU/OK

File will automatically Copy/Move or be Deleted. Remember, if you MOVE a file, it will be deleted from the original location.

Push  button repeatedly to return to previous screens.

```

= = File Management = =
Copy video from internal
> Copy video from external
Copy snapshots from internal
Copy snapshots from external
Delete files from internal
Delete files from external
Toggle Copy or Move
Select files : Individual
    
```

### To select a GROUP of files:

Be sure the File Management Menu shows "Select Files: Group" and select the function you want to do.


Use the ▲▼ buttons to move cursor to the first file you want to work with

Press MENU/OK Job will be selected as indicated by [x]

Move cursor to the next job

Press MENU/OK

Repeat until you have selected all the jobs you wish to work with

Push  button to Copy (or Move/Delete) the selected files. You will also have options to Change your selection or Cancel the process.

Push  button repeatedly to return to previous screens.

```

= = Copy video from internal = =
[ ] 20100425-03.mp4 5.30 MB
[ ] 20100425-02.mp4 2.94 MB
> [x] 20100425-01.mp4 6.34 MB
[ ] 20100425-00.mp4 4.94 MB
    
```

```

= = Copy video from internal = =
[ ] 20100425-03.mp4 5.30 MB
[ ] 20100425-02.mp4 2.94 MB
[x] 20100425-01.mp4 6.34 MB
> [ ] 20100425-00.mp4 4.94 MB
    
```

```

= = 3 files selected = =
> Copy files
Change selection
Cancel
    
```




# USER GUIDE FOR A&H PUSH CAMERA

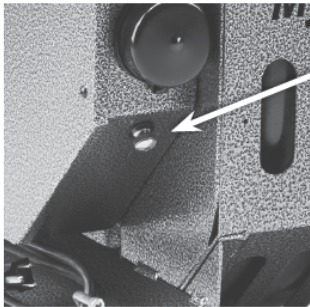
## TO SET OR CHANGE TIME (Setup Menu item)

Select **Setup**, then MENU/OK

Select **Set Date/Time**, then MENU/OK

Use ▲▼ and MENU/OK to set the date and time

Push  repeatedly to return to Main Screen



## GROUND SCREW

- This screw can be used for grounding purposes if needed.

## DIELECTRIC GREASE

- MS11+ and MS11-NG2 only– Apply to the threads on the camera head ice-ball to ensure easy removal later.

## BATTERY TIPS

- With the power switch on or off, the battery charges when the unit is plugged in to AC
- 512hz transmit drains battery more quickly, leave transmit off unless locating
- Store the unit with half charge and in cool temperatures to extend battery life

## TRANSPORT

Between jobs, we recommend removing the camera head from the push rod, and capping both push rod and head with the protective caps that came with the system. Avoid getting grime on the connection components.

When connecting the camera head –or swapping heads included with the MS11+ Combo system – just be sure to align the push rod with the head and screw on until snug and there are no skipped threads. Don't over-tighten or use tools to tighten.

