



PITTSBURGH

SOMERSET

HARRISBURG



# STREET & ROAD

PURCHASE | RENT | USED

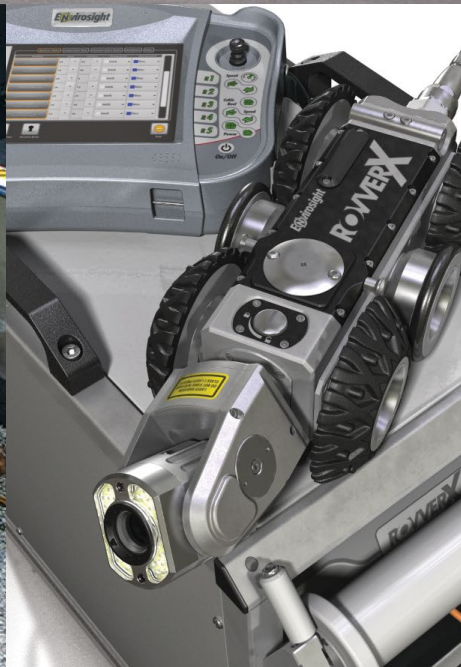
*The Solutions You Trust Since 1963*



## ***CELEBRATING OVER 55 YEARS IN BUSINESS***

*Lead distributor of  
municipal, truck body, and  
environmental equipment.*

- *Street & Road Maintenance*
- *Sewer & Storm Water Maintenance*
- *Underground Utility*
- *Snow Removal*
- *Refuse & Recycling*
- *Airport Maintenance*
- *A&H Bodies*





# COMPANY OVERVIEW

A&H was founded in 1963, and is the region's leading distributor of municipal, truck body, and environmental equipment solutions and products. Headquartered in Pittsburgh, Pennsylvania and with two additional locations in Somerset and Harrisburg, A&H combines top-quality products and parts with expert, reliable support services to meet the needs of our customers throughout Pennsylvania and West Virginia. A&H Equipment is raising the standard in customer care and is considered the most dependable and most reliable equipment distributor. A&H redefines what it means to supply the best solution for the road ahead. A&H is ranked in the top 5% of dealers in the United States by Satisfyd.com for its customer satisfaction.

## SERVICE DEPARTMENT

At A&H we have a full service staff available at all three locations to continue the high quality standards of meeting customer needs. From parts and repairs to operator training, our service staff will make sure the equipment not only works but stays operating. All of our technicians are factory-certified trained and aid in territory road calls to fix equipment if necessary.

*The 2018 "Behind the Scenes" Award was presented to A&H at the NASCAR Safety and Operations Summit in Concord, North Carolina for exemplary track services in 2018.*

## CONTACT US

**800-753-7566**  
**ahequipment.com**

## PARTS DEPARTMENT

A&H Equipment is known for our capabilities to source specialty parts with our computerized parts inventory management system. Overnight shipping on OEM (Original Equipment Manufacturer) parts is always available. The A&H Parts Department has a knowledgeable staff with over 50 years' experience that can help get what you need fast to get you back on the road.

## RENTAL DEPARTMENT

Long-term and short-term rentals are not a problem for your industry's needs. A&H has rental options that are tailored to meet your expectations, and we work closely with your organization to develop solutions that are not only dependable, but durable when it comes to rental equipment. Our rental fleet includes Elgin Crosswind regenerative air sweepers, Elgin Whirlwind pure air vacuum sweepers, Elgin Broom Bear mechanical sweepers, Elgin (non-CDL) Broom Badgers, Vactor & TruVac utility product lines.





# STREET & ROAD



## LEADER IN THE INDUSTRY

Do you have specific roadway needs? Our award winning sales team can help customize purchase packages or rental packages with the option of planned maintenance to keep you worry free. As always we provide on-site demonstrations before developing the right solution for your job completion.



**Mechanical** - Broom Badger - Broom Bear  
Eagle - Pelican - Road Wizard  
**Regenerative Air** - Crosswind1, Crosswind  
**Vacuum** - Whirlwind - Megawind  
**Waterless/Industrial** - Pelican - Eagle



**Utility Bodies**  
**Custom Built Dump Bodies**  
**Snow Plows / Salt Spreaders & Accessories**



**Compact Sweepers** - Madvac LS175  
**Litter Vacuums** - Madvac LN50 - Madvac LR50  
Madvac LR175



**Service Truck w/ Storage Compartments**  
Challenger ST



**Leaf Loaders** - The Windy Series  
The Hurricane Series  
The Typhoon Series



**Utility Bodies & Flatbeds**



**Safety First!**  
Wireless/Bluetooth Ear Protection  
& Communication



[rentals@ahequipment.com](mailto:rentals@ahequipment.com) | [sales@ahequipment.com](mailto:sales@ahequipment.com)



Mechanical - Non-CDL

## BROOM BADGER



- Non-CDL 19,500 lb GVWR chassis
- Left or Right side variable high dump hopper configurations
- Compact wheelbase while offering powerful sweeping performance
- Features a 4.0 yd3 hopper with a variable height dumping up to 10 ft



Mechanical

## BROOM BEAR



- Single-engine technology
- Twin variable displacement hydraulic pumps for increased sweeper system efficiencies
- 4.5 yd3 (3.4 m3) hopper standard
- 11" (279 mm) hopper side shift for maximizing dump truck/container payload distribution
- Squeegee with patented interchangeability to chevron conveyor belt system



Mechanical / Waterless / Industrial

## EAGLE



- 74hp Cummins Tier 4 final auxiliary engine
- 4.5 yd3 (3.4 m3) hopper standard
- 11" (279 mm) hopper side shift for maximizing dump truck/container payload distribution
- Chevron conveyor belt system with patented interchangeability to squeegee system



Mechanical / Waterless / Industrial

## PELICAN



- Market leader offering 360 degrees of operator visibility
- Rear steer for outstanding maneuverability
- Front mounted, variable high dump 3.6 yd3 (2.8 m3) hopper
- Elgin exclusive chevron conveyor belt





# STREET & ROAD



**ELGIN**  
Division of AHE Equipment Corporation

Regenerative Air

## CROSSWIND / CROSSWIND 1



- Single engine
- Superior dust suppression
- Tilt body for traditional dumping of sweepings
- Patented Shared Power technology; less diesel emissions complexity
- Dual-engine platform available



**ELGIN**  
Division of AHE Equipment Corporation

Vacuum

## WHIRLWIND



- Customer tailored performance configurations
- Application flexibility
- Standard simultaneous sweep/dual nozzle sweep functionality
- Suction nozzle(s) designed for demanding road surfaces
- Patented Shared Power technology; less diesel emissions complexity



**ELGIN**  
Division of AHE Equipment Corporation

Vacuum

## MEGAWIND



- Multipurpose platform; catch basin cleaning and/or street sweeper
- Exclusive fully-powered articulating rear vacuum hose; improves operator efficiency
- Large 12" (305 mm) vacuum hose proven in construction and municipal applications
- 10 yd<sup>3</sup> and 13 yd<sup>3</sup> (7.5 m<sup>3</sup> and 10 m<sup>3</sup>) hopper sizes; correct size for every application
- Patented twin engine SharedPower technology; less diesel emissions complexity



**ELGIN**  
Division of AHE Equipment Corporation

Waterless/Industrial

## EAGLE



- 74hp Cummins Tier 4 final auxiliary engine
- 4.5 yd<sup>3</sup> (3.4 m<sup>3</sup>) hopper standard
- 11" (279 mm) hopper side shift for maximizing dump truck/container payload distribution
- Chevron conveyor belt system with patented interchangeability to squeegee system



## Looking for a long-term or short-term rental?

---



### Renting with A&H

We will work with you to meet your budget.

---

#### Rental Purchase Options (RPO) Available

- Included Preventative Maintenance.
- Mobile Service Vehicles to provide onsite service.

#### Like-New Equipment

- Low hours / low mileage.

#### Operator Training

- Onsite training & equipment overview.

#### A&H Rental Fleet

- Our rental fleet includes Elgin Crosswind regenerative air sweepers, Elgin Whirlwind pure air vacuum sweepers, Elgin Broom Bear mechanical sweepers and Elgin (Non-CDL) Broom Badgers, Vactor & TruVac utility product lines.
- 



“Elgin has the best sweeping technology for every application. Residential, airports, race tracks, ports, municipal, construction, industrial — there's an Elgin for the job.”

### CONTACT

---

800- 753- 7566  
[www.ahequipment.com](http://www.ahequipment.com)  
[rentals@ahequipment.com](mailto:rentals@ahequipment.com)





# STREET & ROAD



## Litter Vacuums

### MADVAC LR50



- Only fully robotic arm on the market, simple operation eliminating fatigue with 270-degree arm movement
- Intuitive arm control via 6-position joystick for effortless use
- High operator seating and cab offering protection from the elements
- Street legal lighting package
- Wander hose collects litter up to 15 feet way
- 48" (20cm) Wide vacuum head option



## Compact Sweepers

### MADVAC LS175



- 2 or 4 wheel drive to operate in all terrain areas;
- Hopper size 1.75 CY or 2.75 CY to optimize route and autonomy;
- Automatic climate control unit for operator comfort (option);
- Wander hose for hard to reach areas (option);
- Pressure washer 1500 PSI for additional cleaning (option);
- Add a boom for litter-picking cap
- 10-12 Year Lifespan



## Litter Vacuums

### MADVAC LR175



- Easy to operate and maintain.
- Superior handling, better stability, better curb-climbing capability.
- Short wheel base Turn on a Dime' on speed, and strength.
- Higher machine clearance
- Simple, reliable mechanical design for less annual maintenance and repair
- Low overall height of 78" (1981 mm) ideal for tree-lined roads and underground parking garages.
- Narrow 48" (1219 mm) width to sweep hard to reach areas.
- Robotic arm (6 positions in cab joy-stick) controlled by proportional hydraulic valves



## Litter Vacuums

### MADVAC LN50



- Simple, low cost operation and maintenance
- High operator seating for safety and visibility
- Assisted hydraulic arm controlled via joystick (up/down)
- Wander hose collects litter up to 15 feet away
- 48" Wide vacuum head option

**STAHL**

Service Truck w/ Storage Compartments

**CHALLENGER ST**

The storage compartments of Challenger ST service bodies come standard with material trays and can be further configured with optional drawer packages, hooks and additional trays to keep your work truck organized, so you can quickly locate tools and work more efficiently. To protect your assets from theft and the elements, these service bodies also offer convenient keyed-alike locks, double-panel steel doors with fully concealed bolt-on hinges and weather-tight seals.

Challenger ST service bodies are the classic choice of fleet managers and independent contractors alike for their tough galvanized steel construction, convenient storage and access, and extended years of service.

**TARCO**

Leaf Loaders

**THE WINDY SERIES**

TARCO® Windy Series vacuum leaf loaders, manufactured by Fort Miller FAB3, are trailer mounted vacuums designed to efficiently collect leaves, litter, grass and other road side debris from parks, parking lots, curbs, sidewalks and stadiums.

**TARCO**

Leaf Loaders

**THE HURRICANE SERIES**

The TARCO® Hurricane Series vacuum leaf loaders, manufactured by Fort Miller FAB3, combines the vacuum assembly, hopper and trailer for efficient collecting of leaves, litter, grass and other road side debris. This high capacity vacuum is used for parks, parking lots, curbs, sidewalks and stadiums.

**TARCO**

Leaf Loaders

**THE TYPHOON SERIES**

The TARCO® Typhoon Series vacuum leaf loader, manufactured by Fort Miller FAB3, is a one man operation, truck mounted vacuum for the efficient and cleaner collection of leaves, litter, grass and other roadside debris. Operations are joystick controlled within the cab for a greater degree of safety and higher level of productivity. Our dust reduction feature reduces airborne dust, creating a safer and cleaner environment for operators and surrounding neighborhoods.





# STREET & ROAD



**Sonetics**

Safety/Hearing Protection

## APX377



APX377

Powered by the latest DECT7 wireless technology, the APX377 connects you to team members in full-duplex conversation with advanced hearing protection. With no delays, no buttons to push and no clipping or interference, the multi-channel capability of these headsets lets multiple teams operate simultaneously in the same work area. Push-to-talk or monitor virtually any portable two-way radio via a direct-wire cable connection (wired portable radio adapter required, radio not included).



**Sonetics**

Safety/Hearing Protection

## APX379



APX379

The APX379 adds Bluetooth technology to the features included on the APX377. Pair your mobile phone to make phone calls, listen to music or connect with your enterprise Bluetooth enabled device, all while providing advanced hearing protection. With wireless DECT7, wireless Bluetooth, wired portable two-way radio connectivity, and an integrated personal sound dosimeter, this headset provides unparalleled features and safety.



**Sonetics**

Safety/Hearing Protection

## DECT7 - TEAM HEADSET



The Sonetics DECT7 Wireless Portable Communication System has everything your team needs to communicate and protect hearing on the job site. Up to 10 Apex APX377 or APX379 (with Bluetooth) wireless headsets and a battery-powered portable DECT7 ComHub are enclosed in a waterproof Pelican charging case for easy transportation and storage.

## TESTIMONIAL

“Allegheny County Public Works has purchased several pieces of equipment from A&H Equipment such as Vactors and Elgin Broom Bear sweepers to meet our MS-4 Storm Water Management. We’ve also purchase multiple stainless steel dump trucks, along with leaf vacuum machines. We are very satisfied with the support we receive after our purchases, and look forward to more in the future.” - **George Thompson | Deputy Director of Operations**



[rentals@ahequipment.com](mailto:rentals@ahequipment.com) | [sales@ahequipment.com](mailto:sales@ahequipment.com)



## Crosswind<sup>®</sup>

Searching for a solution that eliminates maintaining and servicing an auxiliary engine on a regenerative air sweeper? Elgin Sweeper Company has the answer. The Crosswind I<sup>®</sup> eliminates all things associated with a diesel auxiliary engine, providing value to customers that extends beyond having one less engine. The Crosswind I has undergone years of customer focused testing and validation; ensuring a design that exceeds expectations!

**PROVEN SINGLE-ENGINE  
REGENERATIVE AIR SWEEPER**



### APPLICATION SOLUTIONS

Elgin Sweeper doesn't offer just one sweeping technology — we take an application-based approach to solving our customers' sweeping needs. Our team works with every customer to ensure they get a machine that fits their specifications, with the right truck, engine configuration, fuel requirements, and options.

### POWERFUL SUPPORT

Elgin Sweepers are built for clean, backed for life. Throughout the life of the sweeper, we offer team training on proper use and maintenance. We have a worldwide network of experienced dealers with factory trained technicians and a local stock of OEM parts and accessories, to ensure total customer peace of mind.

### UNMATCHED QUALITY

The Crosswind was introduced nearly 30 years ago and has been continuously improved in design and production. Elgin sweepers are manufactured in an ISO:9001 certified manufacturing plant. Products are painted prior to assembly and quality tested. The Crosswind I is proudly assembled in the U.S.A. using only the finest materials.



## PITTSBURGH

1124 McLaughlin Run Rd.  
Bridgeville, PA 15017  
P) 412-257-1160  
F) 412-257-4471

## SOMERSET

241 East Garrett Street  
Somerset, PA 15501  
P) 814-444-6403  
F) 814-444-6459

## HARRISBURG

1405B Hagy Way  
Harrisburg, PA 17110  
P) 717-724-0310  
F) 717-724-0309



A&H EQUIPMENT IS A COSTARS SUPPLIER



**Street/Road Maintenance • Sewer/Storm Water Maintenance • Underground Utility  
Snow Removal • Refuse & Recycling • Airport Maintenance • A&H Bodies**



STREET & ROAD



STORM & SEWER



UNDERGROUND  
UTILITY



SNOW & ICE



REFUSE &  
RECYCLING



AIRPORT



USED EQUIPMENT



A&H BODIES