

## Madvac<sup>®</sup> LS175 – The ‘must-have’ baby sweeper for your fleet

Specifically designed to handle all the areas your large street sweepers can't access or manage.

### Sweep narrow locations that have various obstacles and different surface types:

- Area: sidewalks, bike and pedestrian lanes, parking lots, curb side, alleys, public markets, alongside buildings, pathways, etc.
- Obstacles: bus shelters, lamp posts, benches, fire hydrants, etc.
- Paving type: asphalt, concrete, cobblestone pavement.

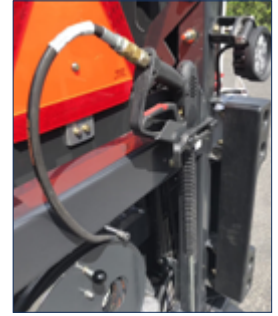
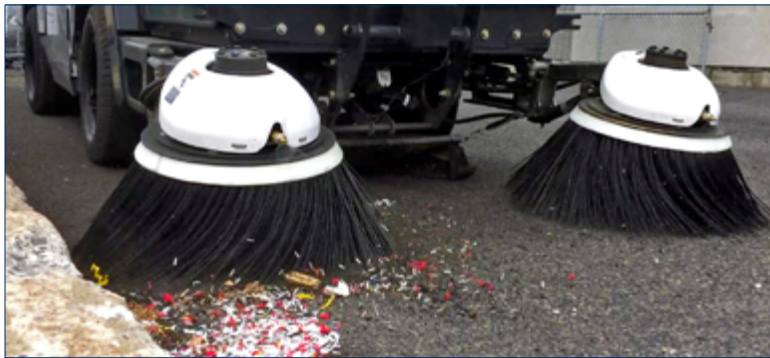
LS175 is the ultimate sweep / vacuum / wash mobile cleaning unit for:

- |                                     |                    |
|-------------------------------------|--------------------|
| ▪ Cities & municipalities           | ▪ Industrial areas |
| ▪ Transit authorities               | ▪ Airports         |
| ▪ Distribution centers              | ▪ Casinos          |
| ▪ Shopping malls                    | ▪ Amusement parks  |
| ▪ Educational and sports facilities | ▪ Seaports         |
|                                     | ▪ Military         |
- **Safe & easy to use** – Does not require a CDL. Simple ergonomic controls, all-round visibility, safe to drive in crowded areas - anyone can operate this unit.

## Built To Suit Your Needs

### Configure the LS175 according to your specific litter control application(s)

- 2 or 4 wheel drive to operate in all terrain areas;
- Hopper size 1.75 CY to optimize route and autonomy;
- Automatic climate control unit for operator comfort (option);
- Wander hose for hard to reach areas (option);
- Pressure washer 1500 PSI for additional cleaning (option);
- Add a boom for litter-picking capability on grass or hard to reach areas (Madvac Combo175 unit).



ABOVE LEFT  
Wander hose (option)  
ABOVE RIGHT  
Pressure washer (option)  
LEFT  
Boom (option)

## The Madvac Advantage

### LS175 is the only compact urban cleaning unit built and serviced in North America

- Specifically designed for North American working conditions;
- 10 to 12-year lifespan;
- Dealers across North America are the best outdoor cleaning expert;
- Parts shipped within 48 hours;
- Sourcewell (formerly NJPA) awarded contract vendor (#122017-EXP);



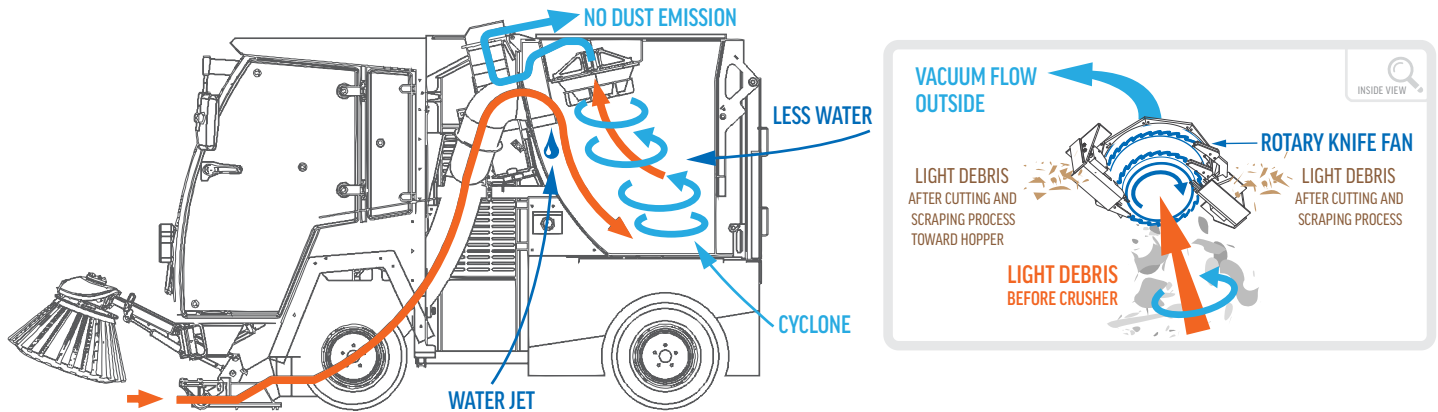
Contract # 122017-EXP





# New Innovative Dust & Debris Filtration System

Dust control performed by water jet on each brush with **no dust from the hopper** due to unique **Madvac RDDF System** (Rotary Debris & Dust Filtration)<sup>®</sup> Centrifugal 1200 RPM rotary knife pulverizing dust & litter before exhausting maximum 10 PPM dust emission.



## Madvac LS175 Highlights

### Performance

- High-capacity 1.75 cu. yd. (1.34 m<sup>3</sup>) stainless steel hopper with 67" (1702 mm) hydraulic dumping height;
- Sweep path from 44" (1118 mm) to 100" (2540 mm) for easy cleaning of tight and wide areas;
- Narrow 48" (1219 mm) width to sweep hard to reach areas;
- Low overall height of 78" (1981 mm) ideal for tree-lined roads and underground parking garages;
- Vacuum power 3500 CFM;
- Travel speed up to 18 Mph (30km) - working speed up to 8 Mph (13km) for clean and fast sweeping.

### Maintenance

- Simple mechanical design for less annual maintenance and repair;
- Straight-through suction system;
- Side-mounted fan makes it impossible for litter to jam the fan;
- Easy access to electrical panel and hydraulic routing.

### Operator

- Superior handling, stability, curb-climbing capability;
- 58-gal (220L) water capacity for fewer fill-ups and longer shifts;
- Brush rotation & down pressure controlled from cab (option);
- 170-degree cab vision with glass doors;
- Adjustable suspended air seat with 3-point seat belt;
- Adjustable arm rest with illuminated switches;
- Sweeper brushes independently controlled from cab;
- Single traction pedal – neutral, forward & reverse (no shifter).





## Madvac<sup>®</sup> LS175 Data and Performance Information

|  |  |  |   |
|--|--|--|---|
| <b>Capacities</b>  |  | <b>Suspension</b>  |   |
| Fuel tank  | 21.1 Gal. (80 L)   | Front  | Axial coil springs / Heavy duty shock absorbers   |
| Hydraulic System   | 23.7 Gal. (90 L)   | Rear   | Longitudinal coil springs / Heavy duty shock absorbers  |
| Litter Capacity  | 1.75 cu. Yd (1.34 m <sup>3</sup> )                             | <b>Sweep Gear</b>  |   |
| Water capacity   | 58 gal. (220 L)  | Brushes  | Two brushes (independently joy-stick controlled)<br>25 inches DIA each (635 mm) Polypropylene |
| <b>Engine Data Tier 4 Final (USA and Canada ONLY)</b>            |  | Sweeping Width   | From 44 inches (1118 mm) to 100 inches (2540 mm)  |
| Model  | Hatz engine 3H50TIC 3 cyl. Turbo with CAC / DOC only           | Pick Up Nozzle   | Hydraulic raise/lower and polymer skate   |
| Displacement   | 91.54 cubic in. (1500 cc)                                      | Brush Speed  | 0 RPM to 150 RPM  |
| Gross Rated Power  | 56.2HP (42.0kW) and CARB / 48.8HP (36.4 kW) @ 2800RPM          | Brush Arm  | Self leveling and self adjustable for brush wear  |
| Air Cleaner  | 2 stage Donaldson with restriction indicator                   | In Cab   | Brush speed & down pressure (option)  |
| <b>Engine Data Tier 3 – export only (OUTSIDE USA and Canada)</b> |  | <b>Electrical</b>  |   |
| Model  | Deutz D2011103i 3 cyl. natural aspiration                      | Voltage  | 12 Volts, 80 AMP alternator / Heavy duty battery  |
| Displacement   | 142.2 cubic in. (2330 cc)                                      | Lighting   | 2 headlights, brakes, turn signals, taillights<br>4-way flashers, 4 amber strobes             |
| Gross Rated Power  | 48 HP (35.8kW) @ 2800 rpm                                      | Fuel gauge, hour meter, oil pressure light, water temperature light, battery light & engine light, |   |
| Air Cleaner  | 2 stage Donaldson with restriction indicator                   | Instruments  |   |
| <b>Litter Collection System</b>                                  |  | Radio, CD, MP3 player (option)<br>Color back up camera with 7" monitor (option)                    |   |
| Type   | Cyclonic 3 stage filtrations                                   | <b>Cab</b>   |   |
| Frame / Body   | Triangular frame tubing ¼ in. (6 mm)                           | Cab  | Forward design, 200 degree vision   |
| Container Material   | Stainless steel  | Windshield   | Full windshield   |
| Dumping Height   | 67 inches (1702 mm)  | Windows  | Side windows open each side   |
| Container Payload  | 2000 lbs (910 kg)  | Light  | Dome light  |
| Power Wash   | Pressure washer 1500 PSI (103.4 BAR) Option                    | Doors  | Full view glass tempered doors  |
| <b>Vacuum System</b>   |  | Heating / AC   | HVAC unit (option)  |
| Vacuum Rating  | 3500 CFM   | Defrost  | Windshield heated micro filament (option)   |
| Air Flow Speed   | 8,400 ft./min  | Seat   | Adjustable air vinyl seat with arm rest   |
| Static Pressure  | 30" of water gauge (7.472 KPA)                                 | <b>Dimensions</b>  |   |
| Remote Vacuum  | Wander hose (option)   | Width  | 48 inches (1219 mm)   |
| <b>Traction</b>  |  | Length   | 122 inches (3099 mm)  |
| Drive  | Front wheel drive / Four-wheel drive (option)                  | Height   | 78 inches (1981 mm)   |
| Forward Speed  | 18.6 mph (30 Km/H)   | Wheelbase  | 65 inches (1651 mm)   |
| Tires  | Radial 225 R 12  | Ground Clearance   | 8.5 inches (216 mm)   |
| Brakes   | Front hydrostatic brakes / Rear mechanical parking disk brakes | <b>Hydraulic System</b>  |   |
| Grade  | Grad ability 25%   | Hydraulic Cooler   | Electric thermostatic fan cooled  |
| Curb Weight  | Dry 5500 Lbs (2,400 Kg)  | Steering   | Automotive type, power assisted   |
| Weight Distribution  | Front 45% / Rear 55%   | Drive System   | Heavy duty hydrostatic drive  |

# exprolink

**PROUD MANUFACTURER OF THE MADVAC PRODUCT LINE**

**Headquarters:** Toll Free 1 855 651-0444  
 2170, De La Province Tel. 450 651-0444  
 Longueuil (Quebec) Fax. 450 651-0447  
 CANADA J4G 1R7

[www.madvac.com](http://www.madvac.com)

