



**Madvac**<sup>®</sup>   
**LS125** 

Indoor / Outdoor

***Lithium battery pack with up to 9 hours autonomy***

Sourcewell  Formerly NJPA  canoe procurement group of canada awarded contract vendor

[www.madvac.com](http://www.madvac.com)

# Specifically designed to handle all the areas your large street sweeper can't access or manage

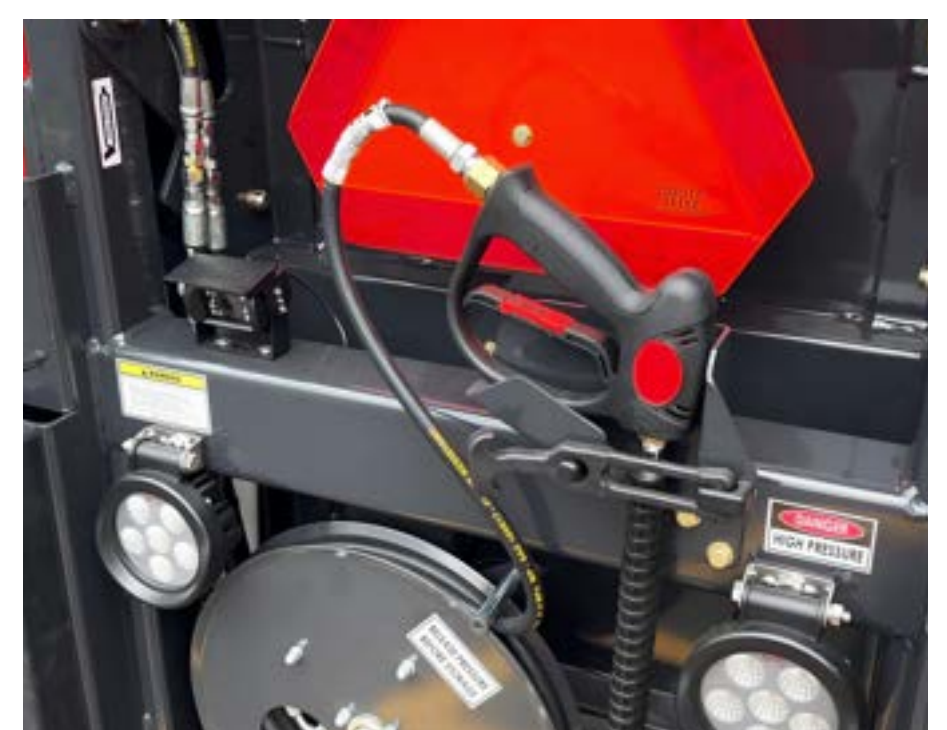
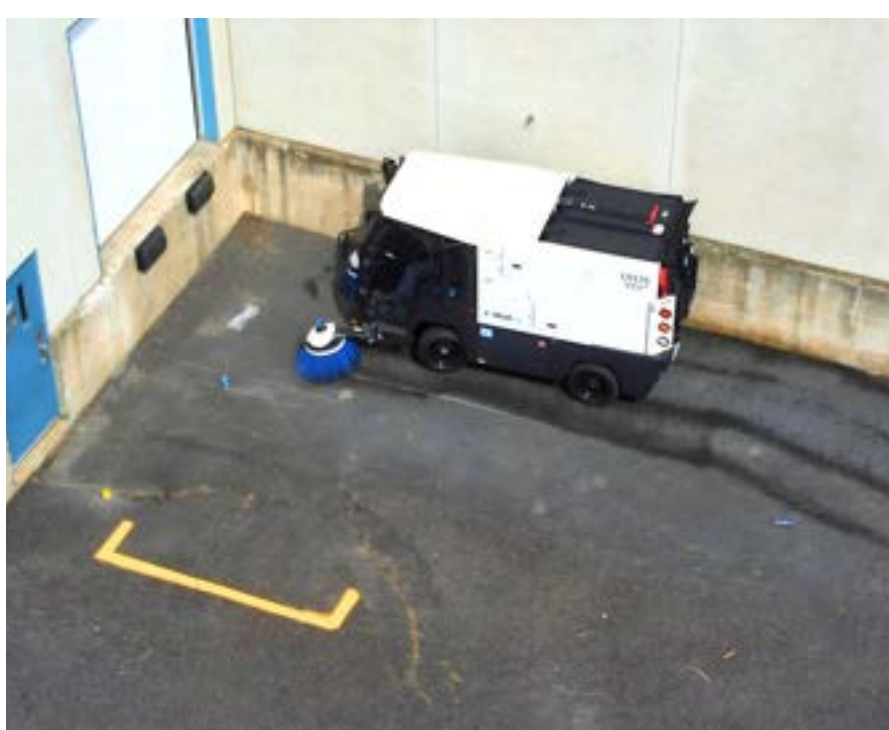


- Sidewalks
- Bike & pedestrian lanes
- Parking lots
- Curb side
- Alleys
- Pathways
- Alongside buildings
- Public markets
- Indoor parking garages

Electric LS125 is the ultimate sweep / vacuum / wash mobile cleaning unit for



- Cities and municipalities
- Outdoor cleaning contractors
- Airports & seaports
- Transit authorities
- Healthcare services
- Distribution centers
- Shopping malls
- Educational & sports facilities
- Manufacturing facilities
- Amusement parks
- Casinos
- Military
- Correctional facilities





# Key Attributes

- LS125 runs using one of the best compact battery models on the market - Lithium-Ion nickel manganese cobalt (Li NMC), providing up to 9 hours of autonomy and 3 times better "energy per weight and volume" ratio in the industry;
- LS125 is the ONLY electric 48" wide closed cabin high-dump sweeper manufactured in North America. Everything is built according to North American standards;

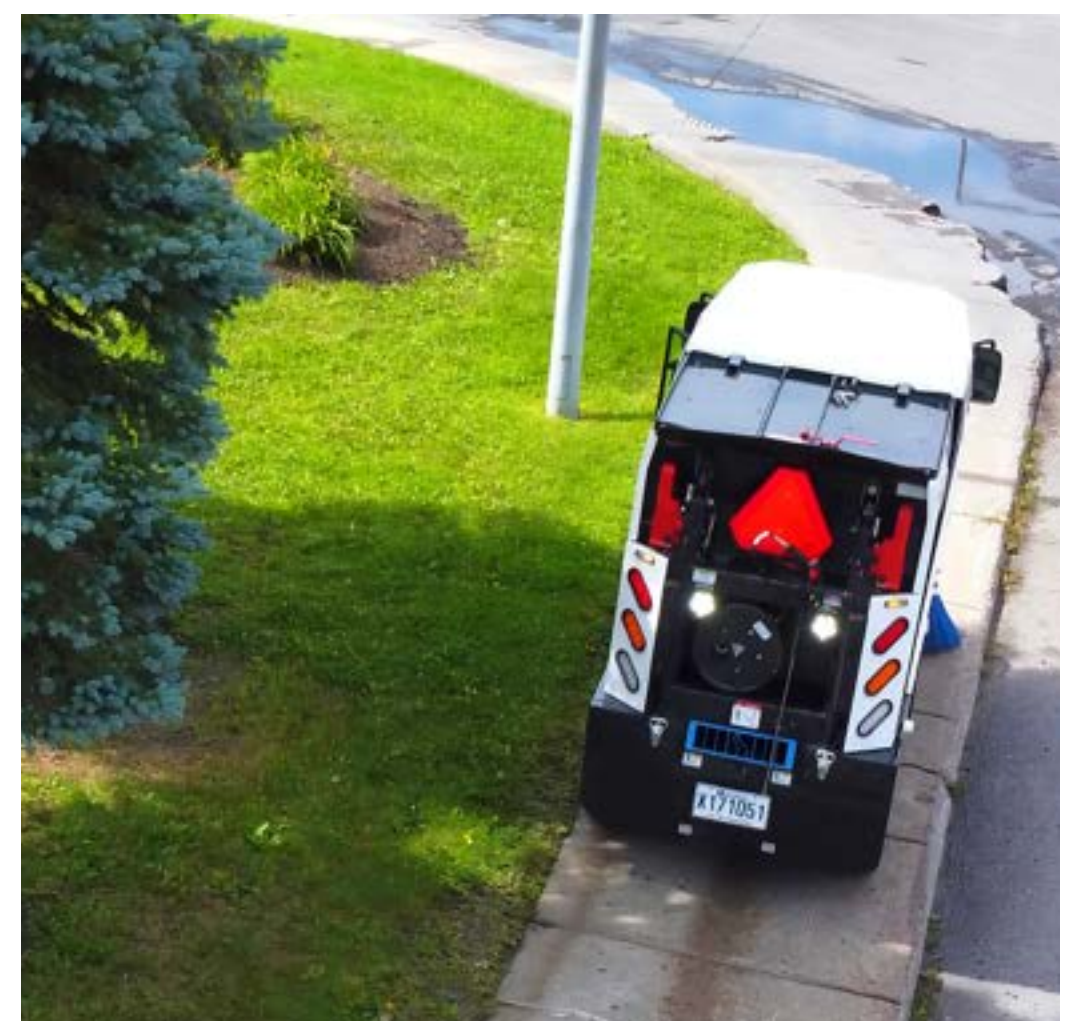
- OEM spare parts shipped within 48 hours;
- 10 to 12 year lifespan will outlast most competitive models;
- A CDL permit is not required to operate this machine;
- Fully street legal lighting - safe and easy to use;
- For maintenance, LS125 offers unprecedented easy access to all critical components of the machine; (Electrical boxes, hydraulic components, main vacuum gate valve);
- Madvac has a 35+ years track record of success - when your machine is due for replacement we'll still be around.



# Built to suit your needs

Configure the LS125 according to your specific requirements

- |                                  |                     |
|----------------------------------|---------------------|
| • Stowed retractable wander hose | • Heated mirrors    |
| • Pressure washer gun            | • Fire extinguisher |
| • Radio + CD + MP3 player system | • Tire flatproofing |





# LS125 VEV

## Data & Performance Information

### Power

Power pack	Lithium-Ion nickel manganese cobalt (Li NMC) high energy capacity, up to 69.2 kWh
Voltage	102 volts battery pack (4 batteries)
Charger outlet	J1772 level 2, 240V/24A
Charging time	9 hours / standard 220V (7.2 kW) charging station, or 3.5 hours if 18kW infrastructure available
Autonomy	Up to 9 hours

### Litter Collection System

Litter capacity	1.25 cu.yd. / 0.96 sq.m. / 252 gal.
Type	3-stage filtration process - water mist system, rotary filter, panel filter
Frame / body	Welded steel plate frame, aluminum body

Container material	Stainless steel
Dumping height	67 in. (1702 mm)
Container tipping angle	142 deg.
Container payload	2000 lbs (907 kg)
Power wash	Pressure washer 2100 psi (optional)

### Vacuum System

Vacuum rating	Up to 2350 CFM
Remote vacuum	5 in. (127 mm) X 12 ft. (3.66 m) stowed wander hose (optional)

### Traction

Drive	Rear wheel drive fully controlled by electric pedal
Forward speed	15 mph (24 km/h)
Tires	Radial 225 R 12 on all 4 wheels
Brakes	Front hydraulic standard brakes; rear electro magnetic parking brake
Gradeability	11.3 deg. (20%)
Curb weight	Dry 5500 lbs (2495 kg)

### Suspension

Front	Two coil springs / heavy duty shock absorbers
Rear	Two coil springs / heavy duty shock absorbers on axle

### Sweep Gear

Brushes	Two brushes (independently joystick controlled) 25 in. (635 mm) diameter each polypropylene
Sweeping width	From 44 in. (1118 mm) to 80 in. (2032 mm)
Pickup nozzle	Electric raise/lower with polymer skate and wheels
Brush speed	0 RPM to 150 RPM
Brush arm	Floating and adjustable
In-cab	Brush speed & down pressure

### Electrical

Lighting	1 headlight; 2 hazard lights; 4 work lights; 4 strobe lights; side panel direction lights; brakes, turn, reverse signals, SMV sign
Instruments	Hour meter, energy recuperation, battery charge level, no water indicator, brake indicator, left turn signal, battery indicator, right turn signal, speed, Key ignition for starting and stopping the vehicle

### Cab

Cab	200-degree cab vision
Windshield	Full windshield laminated glass
Windows	Full ventilation, pivoting side windows that open each side
Light	Interior dome light (2)
Heating / AC	Electric HVAC unit
Defrost	Windshield heated micro filament   Heated mirrors (optional)
Seat	Adjustable pneumatic seat with 2 point seat belt
Convenience	Console accessory box with USB and 12V aux outlet
Displays	Steering-column mounted 4.3" (109 mm) display for vehicle-related information   Overhead mounted 7" (178 mm) touchscreen display for sweeper-related information and HVAC controls   Permanent rear-view monitor

### Dimensions

Width	48 in. (1219 mm)
Length	136 in. (3454 mm)
Height	78 in. (1981 mm)
Wheelbase	65 in. (1651 mm)
Ground clearance	8.5 in. (216 mm)

### Hydraulic System

Drive system	Electric permanent magnet motor
--------------	---------------------------------



Proud manufacturer of the Madvac product line

#### Telephone:

- 1-855-651-0444 (toll free - US/Canada)
- 1-450-651-0444 (international)

**Fax:** 450-651-0447

**Email:** [info@exprolink.com](mailto:info@exprolink.com)

**Address:** 2170 Rue de la Province, Longueuil QC, Canada J4G 1R7

**Website:** [www.madvac.com](http://www.madvac.com)

**Sourcewell (US) and Canoe (Canada) contract vendor number: 093021-EXP**

*Technical specs are subject to change without prior notice*