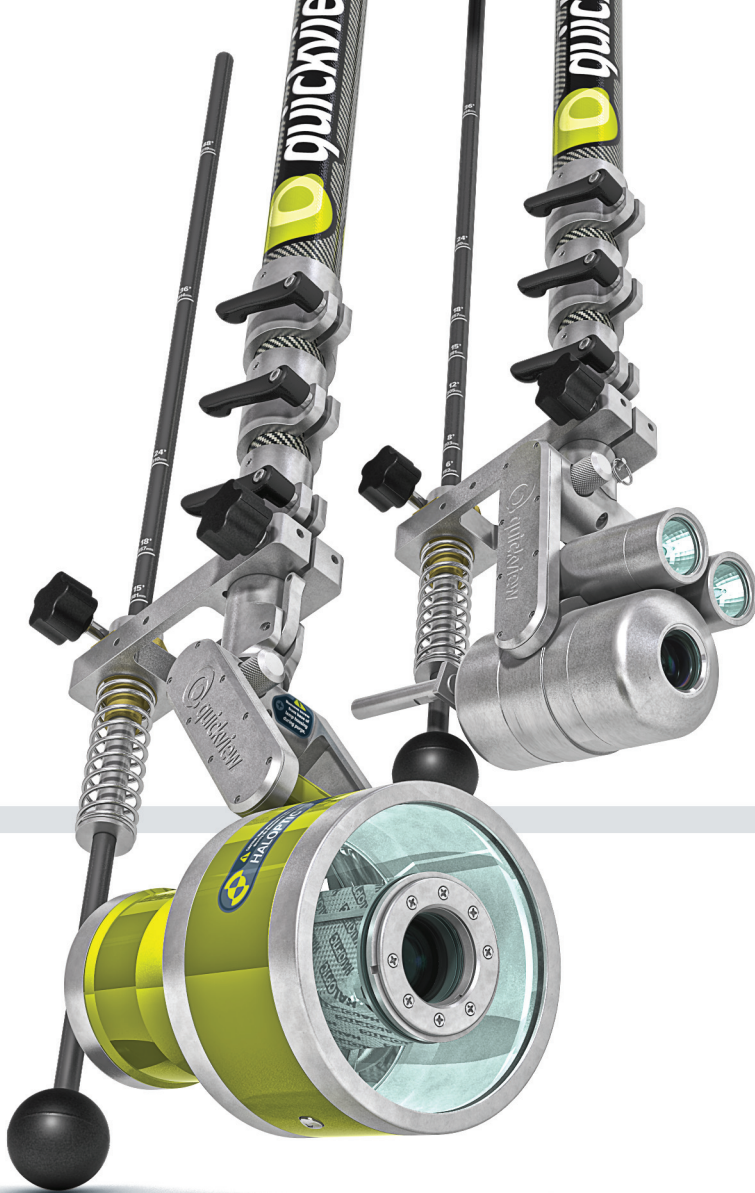


illumination option for QuickView
LED lamps



**underground
understood**

get the **LED** out

Standard and Haloptic versions of the QuickView are now available with an LED illumination option. For short- to mid- range work, this offers enhanced performance, durability and control.

Up to 10,000 hour lamp life

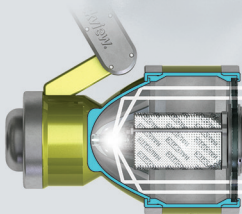
Variable illumination intensity

Instant start-up

Better diffusion for short- to mid-range viewing

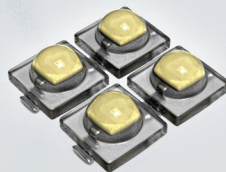
Upgrade option for existing models

Exceptional color balance and even coverage



proven optics

Whether you use patented Haloptic technology or traditional lamps, you can continue to depend on proven optics for maximum range and illumination.



efficient performance

LEDs deliver bright, balanced output with less power consumption and longer service life. They also start instantly, and intensity can be adjusted.



new or retrofit

Order a new system with LED illumination, or retrofit your existing QuickView. LED lamp modules are available for Haloptic and standard QuickView versions.

Envirosight

www.envirosight.com • (866) 936-8476