

SNOWPLOWS & ACCESSORIES

FISHERPLOW.COM



BRAND POSITION

**For more than
70 years we've
been building plows
and spreaders for
way-makers.**

FISHER® NATION doesn't stand to the side waiting for someone else to clear a path. They go where others haven't. And the way we see it, it's our job to keep making the equipment that keeps these guys plowing forward.



STANDARD FEATURES FOR ALL SNOWPLOWS



MINUTE MOUNT® 2 SYSTEM

The FISHER® Minute Mount 2 System has been engineered for superior safety, durability and convenience. The mechanical nature of its design means that there are no sensitive electronics that could fail and prevent you from attaching or removing your plow.

The vehicle mounts and lower gear are built tough and flare both vertically and horizontally to help guide the plow into place during attachment.

Each vehicle mount kit has been engineered for an exact fit* and is certified to meet all applicable Federal and Canadian Motor Vehicle Safety Standards.*

Excludes HS plow and TRAILBLAZER™ UTV plows

*Except for the Universal Mount kit



CHAIN-LIFT DESIGN

The FISHER chain-lift design offers a wide range of performance and reliability advantages over a direct-lift system, such as clean scraping, higher stacking and easy recovery in the rare event of a failure.

Excludes HT Series™ plow, HS plow and TRAILBLAZER UTV plows



FLEET FLEX ELECTRICAL SYSTEM

Fisher Engineering dedicates countless hours researching and developing direct fit electrical systems to ensure your vehicle and plow are safe, reliable and easy to operate.

The FLEET FLEX Electrical System has been created to minimize the intrusion to your vehicle during installation and also provide simple, reliable connections between your vehicle and plow.

The additional benefit of the FLEET FLEX system is that it is completely universal to all current FISHER snowplows. This means that plow fleets are able to optimize their operations and use any plow on any vehicle.

Excludes HS plow and TRAILBLAZER UTV plows



RELIABLE HYDRAULICS

Designed and manufactured exclusively at Fisher Engineering ensures the highest standards of performance, quality and reliability, giving you a plow that is fast, responsive and built to last. All critical hydraulic components are fully enclosed for protection from the elements.



SECURITY GUARD™ ANTI-THEFT SYSTEM

This exclusive anti-theft system is a safe and secure way to electronically lock your snowplow whenever it is detached from your truck.

By creating a link between your snowplow and control, your plow will automatically unlock once it is connected to your vehicle. A backup code is also programmable to allow other vehicles authorized use.



INTENSIFIRE™ DUAL-HALOGEN HEADLAMPS

Standard on all new FISHER® truck plows, the INTENSIFIRE dual-halogen headlamps feature separate cavities for the low-beam and high-beam lamps. Reflectors are designed specifically for each mode, so they light up the road with brighter performance and greater reach.

Excludes TRAILBLAZER™ UTV plows



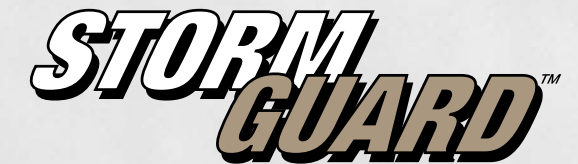
ISOLATION MODULE

An underhood module transfers lights from vehicle to plow automatically and improves system reliability by using plug 'n' play, sealed electrical connections that comply with OEM requirements. Isolating the plow's electrical system from the vehicle's prevents the potential of electrical system damage in the event of a shorted circuit.



UNIVERSAL CONTROL OPTIONS

Choose between the ergonomic Fish-Stik® hand-held control or the dash-mounted joystick control. Both feature automatic shutoff, backlit buttons for night operation, and LED lights which indicate "power" and "float" modes. Additional features include programmable "soft-stop", "one-touch" float, built-in SECURITY GUARD Anti-Theft System and plug-in connector for easy removal.



STORM GUARD™ BAKED-ON POWDER COAT

The industry's best protection against wear and rust, the STORM GUARD baked-on powder coat with epoxy primer is standard on all FISHER snowplows.



PRE-PUNCHED BLADES FOR ACCESSORIES

Plow blades are pre-punched for easy installation of accessories, providing a custom fit. The pre-punched holes also prevent cracking of the powder coat.

Excludes SD Series snowplow





TOUGHER THAN THE ELEMENTS.

The FISHER® XV2™ v-plow comes equipped with extreme flared wings and double-acting cylinders to easily handle anything thrown in its path. Plus, it's qualified for Class 6 vehicles, so it's not just hard-working, it's versatile too.



Photos shown with optional accessories



Extreme Flared Wings

The XV2™ v-plow features flared wings that soar from a 31" center height up to 39" at the outer edge (on 9' 6" models) to bust through big drifts, carry more snow and windrow wide-open areas.

Standard InstaLock Double-Acting Cylinders

InstaLock double-acting cylinders lock the wings together to use the v-plow in straight blade mode with single button control. Double-acting cylinders also hold the wings firmly in place for clean, efficient back dragging.

Trip-Edge Design

The industry-leading FISHER® trip-edge design protects you and your equipment. Only the bottom edge trips, so the blade stays upright and plowed snow stays in front of the blade. Compression-type springs never need to be adjusted or wear out.

Exclusive X-Bracing Design

Constructed from four vertical ribs and eight x-bracing ribs to reinforce the blade for structural integrity and torsional strength.

T-Frame Design

Superior T-Frame design provides optimum strength-to-weight ratio. The blade pitch adjustment feature allows for adjustment of the blade pitch for more even edge wear.

MOLDBOARD AVAILABILITY

Stainless steel: 7' 6", 8' 6" and 9' 6" widths
Powder coated steel: 8' 6" and 9' 6" widths

See pages 4-5 for all standard snowplow features

Steel Center Pin

A 1¼"-diameter, heat-treated steel center pin resides within a three-connection-point hinge for added strength and rigidity.

Lift Ram

The XV2 plow's lift ram cylinder is 1¾" in diameter, providing more lifting power and durability while out on the job.

Center Snow Control

For exceptional snow containment in all positions, the XV2 plow's lift ram has a center deflector designed to prevent snow from going over the top of the blade, and the formed cutting edges reduce trailing snow.

Standard Cutting Edge

The standard, 6", high-carbon steel cutting edge provides increased wear resistance and a clean scrape.

70-Degree Attack Angle

The XV2 features an aggressive 70-degree attack angle for enhanced scraping and back dragging, making it ideal for asphalt or paved surfaces, and for scraping up ice and hard packed snow.

ACCESSORIES

Rubber Deflectors | Wing Extensions
Shoe Kit | Curb Wear Kits | Blade Stop Kit
1/2" and 3/8" Steel Cutting Edges
Back Drag Edge Kit*

*Not compatible with shoe kits on v-plows



TAKE IT TO THE NEXT LEVEL.

With the ability to position the plow in V, straight or scoop mode, plowing snow with the XtremeV™ v-plow can take you to the next level. Whether busting through a long driveway or clearing a parking lot full of cars, the XtremeV v-plow makes quick work of brutal winter conditions.



Standard InstaLock Double-Acting Cylinders

InstaLock double-acting cylinders lock the wings together to use the v-plow in straight blade mode with single button control. Double-acting cylinders also hold the wings firmly in place for clean, efficient back dragging.

Trip-Edge Design

The industry-leading FISHER® trip-edge design protects you and your equipment. Only the bottom edge trips, so the blade stays upright and plowed snow stays in front of the blade. Compression-type springs never need to be adjusted or wear out.

Exclusive X-Bracing Design

Constructed from four vertical ribs and eight x-bracing ribs to reinforce the blade for structural integrity and torsional strength.

T-Frame Design

Superior T-frame design provides optimum strength-to-weight ratio. The blade-pitch adjustment feature allows for adjustment of the blade pitch for more even edge wear.

MOLDBOARD AVAILABILITY

Stainless steel: 7' 6", 8' 6" and 9' 6" widths
Powder coated steel: 8' 6" and 9' 6" widths

Standard Cutting Edge

The standard, 6", high-carbon steel cutting edge provides increased wear resistance and a clean scrape.

70-Degree Attack Angle

The XtremeV™ plow features an aggressive 70-degree attack angle for enhanced scraping and back dragging, making it ideal for asphalt or paved surfaces, and for scraping up ice and hard packed snow.

Center Snow Control

For exceptional snow containment in all positions, the XtremeV v-plow has a center deflector designed to prevent snow from going over the top of the blade, and the formed cutting edges reduce trailing snow.

ACCESSORIES

Rubber Deflector | Wing Extensions
Shoe Kit | Curb Wear Kit | Blade Stop Kit
1/2" and 3/8" Steel Cutting Edges
Back Drag Edge Kit*

See pages 4-5 for all standard snowplow features

*Not compatible with shoe kits on v-plows



INNOVATION KNOWS NO BOUNDARIES.

When winter attacks, fight back in a big way. The next generation of the XLS™* expandable wing snowplows delivers a whole new level of versatility, efficiency and performance. The only expandable plow with independent wing control and trip-edge protection, the XLS plows now come with flared wings and are available in two blade sizes: 8'-10' and 8' 6"-11'. They are built bigger and stronger to carry more snow and accommodate larger trucks. Maximize handling and capacity with unmatched windrowing productivity so you can continue doing what you do even more efficiently.



*All product features and specifications listed in this brochure apply to XLS snowplows with serial numbers beginning with 180210 and higher



Trip-Edge Design

The XLS™ snowplow is the only expandable plow with a trip-edge. The FISHER® industry-leading trip-edge design protects you and your equipment. Only the bottom edge trips, so the blade stays upright and plowed snow stays in front of the blade. Compression-type springs never need to be adjusted or wear out.

Standard Cutting Edges

The standard 6" high-carbon steel cutting edge provides increased wear resistance and a clean scrape. The XLS wings feature adjustable, poly wing cutting edges to provide added trip protection.

Flared Wings for Efficiency

The XLS plows feature flared wings as tall as 36" to maximize snowplowing efficiency and aggressively cast snow further while windrowing. The wings can be controlled independently for scoop, straight and windrowing configurations.

Structural Reinforcement

A structurally reinforced slide box constructed of 3/16" steel, 10 massive ribs and a heavy-duty torque tube provide rigidity and strength to the wings and the blade to eliminate buckling under heavy loads.

MOLDBOARD AVAILABILITY

Powder coated or stainless steel:
8' extends to 10' in straight and 8' 10" in scoop.
8' 6" extends to 11' in straight and 9' 10" in scoop.

See pages 4-5 for all standard snowplow features

FOUR PLOWS IN ONE



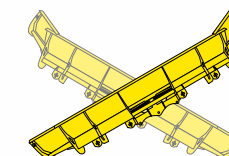
Retracted Straight Blade

Perfect for transport and for narrow-access areas, such as drive-through lanes or tight windrowing areas.



Expanded Straight Blade

Take wider passes in larger, wide-open spaces.



Windrow Left / Right

For unmatched productivity, angle the leading wing and use the full blade with minimal spill off and reduced cleanup time.



Scoop

Angle both wings forward to carry more snow around corners with minimal spill-off.

ACCESSORIES

Rubber Deflector | Shoe Kit | 5/8" Steel Cutting Edge
Carbide Cutting Edge | Back Drag Edge Kit*

*Not compatible with shoe kits on the XLS plow



PUT YOUR FLEET ON THE STREET.

Make short work of big storms. The 9' and 10' FISHER® HC heavy contractor snowplows are built for big trucks and designed to move large amounts of snow. So no matter what contractors or municipality plow drivers get thrown their way, they can move the snow, then move on to the next parking lot or street.



Photo shown with optional accessories



Plow Blade Construction

The HC snowplow features a 34"-tall, 11-gauge, powder coated steel blade that is available in 9' and 10' widths. The aggressive attack angle and blade overhang promote a clean scrape and snow rolling.

Structural Reinforcement

The HC snowplow features massive vertical ribs, gussets and pins, all reinforced by Fisher Engineering's proven A-frame design. This design is built strong to withstand even the heaviest snow for heavy-duty commercial and municipal vehicle applications.

Standard Cutting Edge and Curb Guards

Both the 9' and 10' models come standard with abrasion-resistant curb guards and a 6", top-punched, high-carbon steel cutting edge, increasing wear resistance and providing a clean scrape.

MOLDBOARD AVAILABILITY

Powder coated steel: 9' and 10' widths

Oscillating A-Frame

With its oscillating A-frame, the HC snowplow pivots from side to side allowing the blade to follow the contours of the plowing surface for improved scraping and even cutting edge wear.

Trip-Edge Design

The industry-leading FISHER® trip-edge design protects you and your equipment. Only the bottom edge trips, so the blade stays upright and plowed snow stays in front of the blade. Compression-type springs never need to be adjusted or wear out.

Class 4 Through 6 Trucks

The HC snowplow was engineered specifically to optimize the capabilities of medium duty trucks.

ACCESSORIES

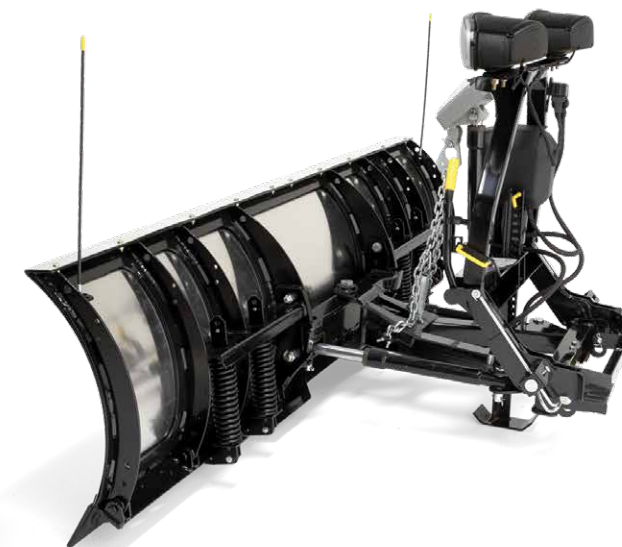
Rubber Deflectors | SnoFoil® Steel Deflector Shoe Kits – Standard Wear and Extreme Wear 5/8" Steel Cutting Edge | Carbide Cutting Edge Blade Stop Kit

See pages 4-5 for all standard snowplow features



STRAIGHT AND TO THE POINT.

The FISHER® HDX™ stainless steel snowplow is perfect for commercial contractors and anyone else looking to push back against nature. With its adjustable attack angle and oscillating A-frame, the HDX snowplow delivers a clean scrape. And with our industry-leading trip-edge design, obstacles may get in your way, but they won't ever stop you.



Adjustable Attack Angle

Customize the blade's angle of attack to 55°, 65° or 75° to accommodate different plowing surfaces, weather conditions or operator preferences. Its boxed-in quadrant design features three attack-angle holes for easy adjustment.*

Oscillating A-Frame

With its oscillating A-frame, the HDX™ snowplow pivots from side to side allowing the blade to follow the contours of the plowing surface for improved scraping and even cutting edge wear.

Structural Reinforcement

The HDX snowplow is constructed with a total of eight vertical ribs welded into a rigid framework. The two inner ribs and base angle have additional reinforcement which provides increased structural support when attacking winter's worst.

MOLDBOARD AVAILABILITY

Stainless steel: 8' and 9' widths

Stainless Steel Moldboard

The 29"-tall moldboard is made of corrosion-resistant stainless steel for the ultimate in durability and performance.

Trip-Edge Design

The industry-leading FISHER® trip-edge design protects you and your equipment. Only the bottom edge trips, so the blade stays upright and plowed snow stays in front of the blade. Compression-type springs never need to be adjusted or wear out.

Standard Cutting Edge

The standard, 6", high-carbon steel cutting edge provides increased wear resistance and a clean scrape.

ACCESSORIES

Rubber Deflectors | Steel Deflector | SnoFoil® Steel Deflector | Wing Extensions | Carbide Cutting Edge | 1/2" and 5/8" Steel Cutting Edges | Rubber Cutting Edge | Poly Cutting Edge | Curb Wear Kits | Back Drag Edge Kit | Shoe Kit | Heavy-Duty Lift Ram Spring Adjustment Tool

See pages 4-5 for all standard snowplow features

*Attack angle adjustment may be limited on certain vehicles due to varying vehicle heights. Refer to your snowplow Owners Manual or FISHER® eMatch system for more details.



PERFECT FOR CONDITIONS THAT AREN'T.

This blade comes in four different sizes, so no matter what you're driving there's an HD2™ snowplow that'll work for you. It's also strong—10 vertical ribs strong—which means even the toughest storms can't stop you. Combined with reliable and fast hydraulics, this plow moves a lot of snow and also raises the bar.



High-Strength Steel Moldboard

Rugged 29"-tall, powder coated, high-strength steel moldboard.

Structural Reinforcement

The rugged HD2™ snowplow blade is reinforced with 10 vertical ribs welded into a rigid framework, which provides additional structural support and torsional strength, even under heavy loads.

Standard Cutting Edge

Each FISHER® HD2 snowplow comes standard with a 1/2" x 6" high-carbon steel cutting edge* to provide increased wear resistance and a clean scrape.

MOLDBOARD AVAILABILITY

Powder coated steel: 7' 6", 8', 8' 6" and 9' widths

Trip-Edge Design

The industry-leading FISHER trip-edge design protects you and your equipment. Only the bottom edge trips, so the blade stays upright and plowed snow stays in front of the blade. Compression-type springs never need to be adjusted or wear out.

ACCESSORIES

Rubber Deflectors | Steel Deflector
SnoFoil® Steel Deflector | Wing Extensions
1/2", 3/8" and 5/8" Steel Cutting Edges
Carbide Cutting Edge | Rubber Cutting Edge
Poly Cutting Edge | Curb Wear Kits | Back Drag
Edge Kit | Shoe Kit | Heavy-Duty Lift Ram

See pages 4-5 for all standard snowplow features

*7' 6" HD2 model comes standard with a 3/8" steel cutting edge

SD SERIES

SHOW 'EM WHAT YOU'RE MADE OF.

Winter won't let up and with the help of the FISHER® SD Series snowplow, neither will you. The FISHER SD Series snowplows are rugged, hard-working plows built for lighter four-wheel-drive vehicles so you don't have to upgrade your truck to get a high-performance snowplowing machine.



Rugged Moldboard

The SD Series powder coated moldboard is 26" high and built with 14-gauge steel for a great balance of performance and versatility.

Structural Reinforcement

The SD Series snowplow has eight vertical ribs and a torsion tube ensuring you have the durability you need when the going gets tough.

Standard Poly Cutting Edge

The wear-resistant poly cutting edge helps improve cutting power, absorb plowing shock and increase scraping ability without adding excess weight.

MOLDBOARD AVAILABILITY

Powder coated steel: 6' 9" and 7' 6" widths

Attack Angle

The aggressive, 75-degree attack angle provides enhanced scraping and back dragging, making it ideal for asphalt or paved surfaces, and for scraping up ice and hard packed snow.

Trip-Edge Design

The industry-leading FISHER® trip-edge design protects you and your equipment. Only the bottom edge trips, so the blade stays upright and plowed snow stays in front of the blade. Compression-type springs never need to be adjusted or wear out.

ACCESSORIES

Rubber Deflector | Steel Deflector
3/8" Steel Cutting Edge | Curb Wear Kit

See pages 4-5 for all standard snowplow features



ANY WORKLOAD. ANY TIME.

Built for half-ton trucks and ready for anything, the HT Series™ snowplow means business. Engineered with all the features that make FISHER® snowplows the choice of the pros, you and your half-ton will be able to tackle any challenge and quickly move on to the next one.



Plow Blade Construction

Ideally suited for half-ton vehicles, the 7' 6", powder coated, steel moldboard is 27" tall, offering you a full-size plow for personal use.

Attack Angle

The aggressive, 75-degree attack angle provides enhanced scraping and back dragging, making it ideal for asphalt or paved surfaces, and for scraping up ice and hard packed snow.

Scrape Lock

The Scrape Lock feature hydraulically locks the blade down for cleaner scraping and back dragging performance.

Structural Reinforcement

Six vertical ribs and a full-length horizontal tube provide extra stability and strength to the core of the plow blade.

Trip-Edge Design

The industry-leading FISHER® trip-edge design protects you and your equipment. Only the bottom edge trips, so the blade stays upright and plowed snow stays in front of the blade. Compression-type springs never need to be adjusted or wear out.

MOLDBOARD AVAILABILITY

Powder coated steel: 7' 6" width

ACCESSORIES

Rubber Deflector | SnoFoil® Poly Deflector
Carbide Cutting Edge | 3/8" and 5/8" Steel
Cutting Edges | Curb Wear Kits | Shoe Kit

See pages 4-5 for all standard snowplow features

FISHER® FULL-LINE SNOWPLOWS + ACCESSORIES



PLOW YOUR PROPERTY LIKE A PRO.

The FISHER® HS compact snowplow is a full-featured snowplow that's easy to attach and easy to operate, so you can clear your property how you want and when you want from the comfort of your own vehicle. Designed specifically for mid-size pickup trucks and SUVs, the FISHER HS compact plow will have you rigged and ready for whatever winter throws your way.



High-Strength Construction

The 23½"-tall, powder coated moldboard is built with high-strength, low alloy steel that is stronger and lighter than conventional steel.

Structural Reinforcement

Six vertical ribs deliver exceptional torsional strength to eliminate blade twisting.

Formed Base Channel

A formed base channel provides extra support along the bottom of the plow blade.

Full-Trip Moldboard

The HS compact snowplow features full-blade trip. This design incorporates two trip springs, allowing the blade to trip forward when encountering hidden obstacles, protecting your snowplow and vehicle from jarring damage.

MOLDBOARD AVAILABILITY

Powder coated steel: 6' 8" and 7' 2" widths

Ground Clearance

When the plow is not in use, quickly maximize vehicle ground clearance with the removable receiver brackets. No tools required.

Standard Cutting Edge

The standard, 5", high-carbon steel cutting edge provides increased wear resistance and a clean scrape.

Easy On / Easy Off

Simple mechanical attaching system makes attaching and detaching your plow quick and easy.

Scrape Lock

The Scrape Lock feature hydraulically locks the blade down for cleaner scraping and back dragging performance.

ACCESSORIES

Rubber Deflector | Poly Cutting Edge
3/8" Steel Cutting Edge | Curb Wear Kit
Shoe Kit

See pages 4-5 for all standard snowplow features



FLEX YOUR FLEET'S MUSCLE.

Even the biggest storms are no match for the FISHER® STORM BOXX™ pusher plows. Attach a pusher plow to your skid-steer, backhoe or wheel loader and move massive amounts of snow, fast. The STORM BOXX plows are available in a variety of widths and is built to last so you can count on it year after year.

Structural Steel Channel

A structural steel channel across the entire blade is internally-lined with stiffener ribs for structural integrity and bucket-impact strength.

Side-Support Posts

Side-support posts provide protection against bending from curbs or other accidental impact.

Quick Change Attachment System

Fully formed gussets support both the upper and lower post, which connect directly with the internal stiffener ribs for strength and support.

Standard Cutting Edge and Shoes

The premium rubber cutting edge is adjustable and reversible to maximize use and abrasion-resistant, steel wear shoes on the sideplates enhance the life of the cutting edge.



For Skid-Steers

Available in 8' and 10' widths, the STORM BOXX pusher plow for skid-steers moves up to 7 and 9 cubic yards of snow.



For Backhoes

Available in 10' and 12' widths, the STORM BOXX pusher plow for backhoes moves up to 9 and 11 cubic yards of snow.



For Wheel Loaders

Available in 12', 14' and 16' widths, the STORM BOXX pusher plow for wheel loaders moves up to 15, 18 and 21 cubic yards of snow.



UPGRADE YOUR EARNING POTENTIAL.

Put your skid-steer to work with an XRS™, HDX™ or HD2™ snowplow. Built to handle the extra demands of skid-steer operation, the XRS, HDX and HD2 plows offer fast and easy hook up, adding versatility to your snow-clearing arsenal. Clear large parking lots, maneuver between cars and parking islands, and get the most out of your skid-steer this winter.



XRS SKID-STEER PLOW

Automatically Adjusting Wings

Now you can maneuver snow like never before with the responsive XRS skid-steer plow. Designed specifically for skid-steer applications, this rugged plow automatically retracts the inside wing when fully angled and then automatically returns to the scoop position once straight.

HDX AND HD2 SKID-STEER PLOWS

The stainless steel HDX skid-steer snowplow features an adjustable attack angle that lets you customize your setup for plowing surfaces, weather conditions and plowing preferences. The powder coated HD2 skid-steer plow stands up to the extra demands of skid-steer operation year after year.

Onboard Hydraulics

Skid-steer plows are quick to install and easy to operate. Leverage the skid-steer's onboard hydraulic system for powerful, efficient operation. Relief valves help protect the operator and the equipment when encountering hidden obstacles.

Attachment

The Universal skid-steer mount provides a number of application options. With 6 degrees of total side-to-side oscillation, the blade can easily follow the contours of the pavement for a cleaner scrape.

MOLDBOARD AVAILABILITY

XRS: Powder coated steel: 8' 7" in scoop mode and 7' 10" fully angled

HDX: Stainless steel: 8' and 9' widths

HD2: Powder coated steel: 7' 6", 8', 8' 6" and 9' widths

ACCESSORIES

Rubber Deflectors | Shoe Kits | Hydraulic Coupler Kit

REDEFINE UTILITY.

Get more use out of your utility vehicle with the FISHER® TRAILBLAZER™ line of UTV plows. These plows are engineered to fit a wide variety of UTVs and to handle the same demands as our commercial plows. Constructed from high-strength, low alloy steel, both models feature an easy-on/easy-off UTV mounting system and removable receiver brackets for exceptional ground clearance. TRAILBLAZER UTV plows feature Scrape Lock for clean scraping and back dragging.



STRAIGHT BLADE

Blade Construction

The 6'-wide, 14-gauge, powder coated steel moldboard features four vertical ribs for strength and durability.

Standard Cutting Edge

The standard, 5", high-carbon steel cutting edge provides increased wear resistance and a clean scrape.

Full-Trip Moldboard

Two heavy-duty coil springs protect your plow and UTV by allowing the whole blade to trip when striking obstacles.

ACCESSORIES

Rubber Deflectors | Poly Cutting Edges | Shoe Kits
Light Bar Kit | Curb Wear Kit (straight blade only)
Wing Extensions (v-plow only) | Blade Stop Kit (v-plow only)



V-PLOW BLADE

Blade Construction

Featuring a 6'-wide, 14-gauge powder coated steel, flared moldboard, the TRAILBLAZER UTV v-plow easily adapts to handle 5' sidewalks and gates in angle, scoop or V mode.

Standard Cutting Edge

The standard, 5", high-carbon steel cutting edge provides increased wear resistance and a clean scrape.

Structural Reinforcement

The TRAILBLAZER v-plow blade is reinforced with six vertical ribs and features the strength of our proven T-frame design.

Trip-Edge Design

The industry-leading FISHER trip-edge design protects you and your equipment. Only the bottom edge trips, so the blade stays upright and plowed snow stays in front of the blade. Compression-type springs never need to be adjusted or wear out.

Standard InstaLock Double-Acting Cylinders

InstaLock double-acting cylinders lock the wings together to use the v-plow in straight blade mode with single button control. Double-acting cylinders also hold the wings firmly in place for clean, efficient back dragging.

THE NEXT STEP IN SIDEWALKS.

Sidewalks are one of the biggest reasons you'll get called back to a job. The FISHER® RB-400 walk-behind rotary broom helps get walkways cleaner by scraping and sweeping snow all the way down to the surface. It's also perfect for areas that are tight up to buildings, curbs or edging. Whether it's just a light dusting, heavy wet snow or compacted snow that was walked on or driven on before you got to the job, the walk-behind rotary broom will take care of the situation quickly and leave you with a clean that is unmatched.



Adjustable Speed and Down Pressure

Adjustable broom-rotation speed and adjustable down pressure allow you to adapt to any condition.

Floating, Pivoting Broom Head

Floating, pivoting broom head gives you five angle settings to adjust the trajectory of the snow.

Plow Blade

Quick-attach plow blade features wheels and floating design to move heavy or deep snow.

Seven-Position Height Adjustment

Seven-position handlebar height adjustment for operator comfort.

Active-Assist Steering

Active-assist steering and freewheel design allow for 360-degree turning.

Brush-Head Design

Unique brush-head design features angled outer bristles to clean-up close to buildings, curbs and edging.

ACCESSORIES

Debris Collector | Multi-Purpose Bristles

OFFICIAL GENUINE FACTORY-TOUGH.



FISHER® Genuine Factory-Tough accessories are manufactured with the FISHER quality you've come to expect. They're designed to enhance your plow's performance and longevity while also allowing you to customize your plow to meet the specific demands of each unique account.

SNOWPLOW ACCESSORIES



Cutting Edges

Increase wear resistance and restore your worn base angle to the proper geometry. Steel, rubber, poly and carbide options available depending on plow model.



Wing Extensions

Expand the carrying capacity of your XV2™ (shown), XtremeV™, HD2™, HDX™ and TRAILBLAZER™ UTV v-plow by adding a pair of genuine FISHER wing extensions.



Rubber Deflectors – 10" and 18"

Made from 2-ply, heavy-duty rubber, this easy-to-install rubber deflector kit will provide improved visibility by deflecting snow forward instead of on your windshield.



Curb Wear Kits

Constructed of abrasion-resistant material and designed to fit tight to the blade, these curb guards will allow you to plow along curbs, without damaging your blade. Kits vary by plow model.



SnoFoil® Steel and Poly Deflectors

The curved, rigid design of the SnoFoil deflector provides excellent snow-rolling performance, ensuring that you have visibility while plowing regardless of the conditions.



Shoe Kits

Designed to increase the durability and life span of cutting edges and base angles by raising the blade for use on gravel and uneven surfaces. Kits vary by plow model.



Steel Deflector

Extend the height of your blade and help keep snow off the windshield without affecting your ability to stack snow.



Back Drag Edges

Made from 1/4" abrasion-resistant steel and custom fit to your blade, this back drag edge will improve results by providing a clean scrape while back dragging.

SNOWPLOW MAINTENANCE



Emergency Parts Kit – Minute Mount® 2

Be prepared! This emergency parts kit is designed specifically for the new FLEET FLEX system snowplows. All kits contain high-volume FISHER® Genuine Factory-Tough service parts needed for most emergency repairs.



Hydraulic Fluid

FISHER EZ Flow high-performance hydraulic fluid is specifically formulated to provide better viscosity in all temperatures for optimal performance in severe conditions. Available in 1-quart, 1-gallon and 55-gallon sizes.



FISHER Factory Original Paint

Genuine Factory-Tough paint in black, silver, and FISHER yellow provides durable coverage and is mixed to match your original equipment. Available in spray cans, quarts or gallons.



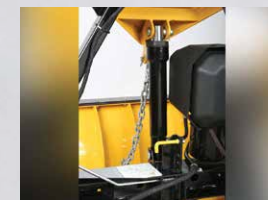
Blade Stop Kit

Designed to transfer extreme impacts throughout the blade's structure and reduce stress on the hydraulic rams. Available for HC (shown), XV2™, XtremeV™ and TRAILBLAZER™ snowplows.



Plow Parka

Heavy-duty, FISHER-branded, nylon cover protects electrical and hydraulic systems.



Heavy-Duty Lift Ram

Improve your blade's lifting force with this larger-diameter ram.



FLEX ARM™ Kit

Quick-release, flexible control mount adjusts into any position. Magnetic base for easy removal with no mounting holes in your dash.



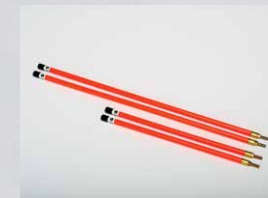
Light Bar Kit

Light up the path in front of your TRAILBLAZER™ UTV plows with this light bar accessory. These LED headlamps help brighten your way.



Multi-Purpose Bristles

Replace the snow bristles on the RB-400 rotary broom during the off season with these multi-purpose bristles for sweeping debris on a wide variety of surfaces and applications.



Commercial Blade Guide Kits

Commercial blade guides are highly visible fluorescent orange, enhanced with reflective tape, featuring the FISHER logo, and available in 24" or 36" lengths.



Debris Collector

The debris collector easily attaches to the front of your RB-400 rotary broom, so you can sweep up waste and debris quickly, keep it contained and dispose of it properly.

Consult your local FISHER Dealer or fisherplows.com for more information regarding accessory compatibility and availability.

SPECIFICATIONS

XV2™



PLOW TYPE	V-PLOW	V-PLOW	V-PLOW
MOLDBOARD OPTIONS	Stainless	Steel/Stainless	Steel/Stainless
BLADE WIDTH	7' 6" (2.29 m)	8' 6" (2.59 m)	9' 6" (2.90 m)
BLADE HEIGHT	At Center: 31" (78.74 cm) At End: 37" (93.98 cm)	At Center: 31" (78.74 cm) At End: 38" (96.52 cm)	At Center: 31" (78.74 cm) At End: 39" (99.06 cm)
BLADE THICKNESS	14 ga (1.98 mm)	14 ga (1.98 mm)	14 ga (1.98 mm)
TRIP SPRINGS	4	4	6
RIBS	12	12	12
LIFT CYLINDER	1 ¾" x 10" (4.45 cm x 25.40 cm)	1 ¾" x 10" (4.45 cm x 25.40 cm)	1 ¾" x 10" (4.45 cm x 25.40 cm)
ANGLING RAMS	1 ¾" x 11" (4.45 cm x 27.94 cm)	1 ¾" x 11" (4.45 cm x 27.94 cm)	1 ¾" x 11" (4.45 cm x 27.94 cm)
PLOWING WIDTH (FULL ANGLE)	Full Angle: 6' 7" (2.01 m) Scoop: 6' 4" (1.93 m) Full V: 6' 10" (2.08 m)	Full Angle: 7' 5" (2.26 m) Scoop: 7' 2" (2.18 m) Full V: 7' 8" (2.34 m)	Full Angle: 8' 6" (2.59 m) Scoop: 8' 2" (2.49 m) Full V: 8' 7" (2.62 m)
APPROX. WEIGHT*	914 lb (414 kg)	957 lb (434 kg)	1044 lb (473 kg)
CUTTING EDGE	¾" x 6" (0.95 cm x 15.24 cm) ½" x 6" (1.27 cm x 15.24 cm)**	¾" x 6" (0.95 cm x 15.24 cm) ½" x 6" (1.27 cm x 15.24 cm)**	½" x 6" (1.27 cm x 15.24 cm)
WEAR SHOES	Optional	Optional	Optional
MOUNT TYPE	Minute Mount® 2	Minute Mount 2	Minute Mount 2

*Plus vehicle mount: approx. 60 lb
**Optional accessory

XTREMEV™



PLOW TYPE	V-PLOW	V-PLOW	V-PLOW
MOLDBOARD OPTIONS	Stainless	Steel/Stainless	Steel/Stainless
BLADE WIDTH	7' 6" (2.29 m)	8' 6" (2.59 m)	9' 6" (2.90 m)
BLADE HEIGHT	At Center: 29" (73.66 cm) At End: 30 ¾" (78.11 cm)	At Center: 29" (73.66 cm) At End: 31" (78.74 cm)	At Center: 31" (78.74 cm) At End: 33" (83.82 cm)
BLADE THICKNESS	14 ga (2.66 mm)	14 ga (2.66 mm)	14 ga (2.66 mm)
TRIP SPRINGS	4	4	6
RIBS	12	12	12
LIFT CYLINDER	1 ½" x 10" (3.81 cm x 25.40 cm)	1 ½" x 10" (3.81 cm x 25.40 cm)	1 ½" x 10" (3.81 cm x 25.40 cm)
ANGLING RAMS	1 ¾" x 11" (4.45 cm x 27.94 cm) ½" x 6" (1.27 cm x 15.24 cm)**	1 ¾" x 11" (4.45 cm x 27.94 cm) ½" x 6" (1.27 cm x 15.24 cm)**	1 ¾" x 11" (4.45 cm x 27.94 cm)
PLOWING WIDTH (FULL ANGLE)	Full Angle: 6' 6" (1.98 m) Scoop: 6' 3" (1.91 m) Full V: 6' 9" (2.06 m)	Full Angle: 7' 5" (2.26 m) Scoop: 7' 1" (2.16 m) Full V: 7' 7" (2.31 m)	Full Angle: 8' 3" (2.51 m) Scoop: 7' 11" (2.41 m) Full V: 8' 7" (2.62 m)
APPROX. WEIGHT*	821 lb (372 kg)	899 lb (407 kg)	1013 lb (459 kg)
CUTTING EDGE	¾" x 6" (0.95 cm x 15.24 cm) ½" x 6" (1.27 cm x 15.24 cm)**	¾" x 6" (0.95 cm x 15.24 cm) ½" x 6" (1.27 cm x 15.24 cm)**	½" x 6" (1.27 cm x 15.24 cm)
WEAR SHOES	Optional	Optional	Optional
MOUNT TYPE	Minute Mount 2	Minute Mount 2	Minute Mount 2

*Plus vehicle mount: approx. 60 lb
**Optional accessory

XLS™†



PLOW TYPE	WINGED	WINGED
MOLDBOARD OPTIONS	Steel/Stainless	Steel/Stainless
BLADE WIDTH	Retracted: 8' (2.44 m) Expanded: 10' (3.05 m) Scoop: 8' 10" (2.69 m)	Retracted: 8'6" (2.59 m) Expanded: 11' (3.35 m) Scoop: 9' 10" (3.00 m)
BLADE HEIGHT	At Center: 31" (78.74 cm) At End: 35" (88.90 cm)	At Center: 31" (78.74 cm) At End: 36" (91.44 cm)
BLADE THICKNESS	14 ga (2.11 mm)	14 ga (2.11 mm)
TRIP SPRINGS	4	4
RIBS	10	10
LIFT CYLINDER	1 ¾" x 10" (4.45 cm x 25.40 cm)	1 ¾" x 10" (4.45 cm x 25.40 cm)
ANGLING RAMS	1 ½" x 10" (3.81 cm x 25.40 cm)	1 ½" x 10" (3.81 cm x 25.40 cm)
PLOWING WIDTH (FULL ANGLE)	Retracted: 7' 2" (2.18 m) Expanded: 9' (2.74 m) Scoop: 7' 11" (2.41 m)	Retracted: 7' 11" (2.41 m) Expanded: 10' 6" (3.20 m) Scoop: 9' 6" (2.90 m)
APPROX. WEIGHT*	1107 lb (502.13 kg)	1140 lb (517.10 kg)
BLADE CUTTING EDGE	½" x 6" Steel (1.27 cm x 15.24 cm)	½" x 6" Steel (1.27 cm x 15.24 cm)
WING CUTTING EDGE	1 ½" x 9" Polyurethane (3.81 cm x 22.86 cm)	1 ½" x 9" Polyurethane (3.81 cm x 22.86 cm)
WEAR SHOES	Optional	Optional
MOUNT TYPE	Minute Mount® 2	Minute Mount 2

*Plus vehicle mount: approx. 60 lb
†Snowplows with serial numbers beginning with 180210 and higher.

HC



HDX™



PLOW TYPE	STRAIGHT	STRAIGHT	STRAIGHT	STRAIGHT
MOLDBOARD OPTIONS	Steel	Steel	Stainless	Stainless
BLADE WIDTH	9' (2.74 m)	10' (3.05 m)	8' (2.44 m)	9' (2.74 m)
BLADE HEIGHT	34" (86.36 cm)	34" (86.36 cm)	29" (76.33 cm)†	29" (76.33 cm)†
BLADE THICKNESS	11 ga (3.05mm)	11 ga (3.05mm)	14 ga (1.99 mm)	14 ga (1.99 mm)
TRIP SPRINGS	6	6	4	4
RIBS	8	8	8	8
LIFT CYLINDER	1 ¾" x 10" (4.45 cm x 25.40 cm)	1 ¾" x 10" (4.45 cm x 25.40 cm)	1 ½" x 10" (3.81 cm x 25.40 cm)	1 ½" x 10" (3.81 cm x 25.40 cm)
ANGLING RAMS	2" x 12 ½" (5.08 cm x 31.75 cm)	2" x 12 ½" (5.08 cm x 31.75 cm)	1 ½" x 12" (3.81 cm x 30.48 cm)	1 ½" x 12" (3.81 cm x 30.48 cm)
PLOWING WIDTH (FULL ANGLE)	7' 11" (2.41 m)	8' 9" (2.67 m)	7' 2" (2.19 m)	8' 1" (2.46 m)
APPROX. WEIGHT*	1100 lb (498.95 kg)	1125 lb (510.29 kg)	861 lb (391 kg)	902 lb (409 kg)
CUTTING EDGE	½" x 6" (1.27 cm x 15.24 cm)	½" x 6" (1.27 cm x 15.24 cm)	½" x 6" Steel (1.27 cm x 15.24 cm)	½" x 6" Steel (1.27 cm x 15.24 cm)
WEAR SHOES	Optional	Optional	Optional	Optional
MOUNT TYPE	Minute Mount 2	Minute Mount 2	Minute Mount 2	Minute Mount 2

*Plus vehicle mount: approx. 184 lb on HC model; 60 lb on HDX model
†HDX blade height shown is for the 55° attack angle. The 65° attack-angle blade height is 28.5" and the 75° attack-angle blade height is 27.0"

Specifications subject to change without prior notice. Please visit fisherplows.com for the most current specifications.



SPECIFICATIONS CONT.

HD2™



PLOW TYPE	STRAIGHT	STRAIGHT	STRAIGHT	STRAIGHT
BLADE WIDTH	7' 6" (2.29 m)	8' (2.44 m)	8' 6" (2.59 m)	9' (2.74 m)
BLADE HEIGHT	29" (73.66 cm)	29" (73.66 cm)	29" (73.66 cm)	29" (73.66 cm)
BLADE THICKNESS	12 ga (2.66 mm)	12 ga (2.66 mm)	12 ga (2.66 mm)	12 ga (2.66 mm)
TRIP SPRINGS	3	4	4	4
RIBS	10	10	10	10
LIFT CYLINDER	1 ½" x 10" (3.81 cm x 25.40 cm)	1 ½" x 10" (3.81 cm x 25.40 cm)	1 ½" x 10" (3.81 cm x 25.40 cm)	1 ½" x 10" (3.81 cm x 25.40 cm)
ANGLING RAMS	1 ½" x 12" (3.81 cm x 30.48 cm)	1 ½" x 12" (3.81 cm x 30.48 cm)	1 ½" x 12" (3.81 cm x 30.48 cm)	1 ½" x 12" (3.81 cm x 30.48 cm)
PLOWING WIDTH (FULL ANGLE)	6' 9" (2.05 m)	7' 2" (2.19 m)	7' 7" (2.32 m)	8' 1" (2.46 m)
APPROX. WEIGHT*	684 lb (310 kg)	734 lb (332 kg)	750 lb (340 kg)	770 lb (349 kg)
CUTTING EDGE	¾" x 6" (0.95 cm x 15.24 cm)	½" x 6" (1.27 cm x 15.24 cm)	½" x 6" (1.27 cm x 15.24 cm)	½" x 6" (1.27 cm x 15.24 cm)
WEAR SHOES	Optional	Optional	Optional	Optional
MOUNT TYPE	Minute Mount® 2	Minute Mount 2	Minute Mount 2	Minute Mount 2

*Plus vehicle mount: approx. 60 lb

SD SERIES



HT SERIES™



PLOW TYPE	STRAIGHT	STRAIGHT	STRAIGHT
BLADE WIDTH	6' 9" (2.06 m)	7' 6" (2.29 m)	7' 6" (2.29 m)
BLADE HEIGHT	26" (66.04 cm)	26" (66.04 cm)	27" (68.58 cm)
BLADE THICKNESS	14 ga (1.98 mm)	14 ga (1.98 mm)	14 ga (1.98 mm)
TRIP SPRINGS	2	2	2
RIBS	8	8	6 + Tube
LIFT CYLINDER	1 ½" x 6" (3.81 cm x 15.24 cm)	1 ½" x 6" (3.81 cm x 15.24 cm)	2" x 6 ¾" (5.08 cm x 17.14 cm)
ANGLING RAMS	1 ½" x 10" (3.81 cm x 25.40 cm)	1 ½" x 10" (3.81 cm x 25.40 cm)	1 ½" x 8" (3.81 cm x 20.32 cm)
PLOWING WIDTH (FULL ANGLE)	6' 1" (1.85 m)	6' 9" (2.06 m)	6' 7" (2.01 m)
APPROX. WEIGHT*	472 lb (214 kg)	487 lb (220 kg)	414 lb (188 kg)
CUTTING EDGE	1" x 6" Poly (2.54 cm x 15.24 cm)	1" x 6" Poly (2.54 cm x 15.24 cm) ¾" x 6" Steel (0.95 cm x 15.24 cm)	¾" x 6" Steel (0.95 cm x 15.24 cm)** ½" x 6" Steel (1.27 cm x 15.24 cm)** 1" x 6" Steel (2.54 cm x 15.24 cm)**
WEAR SHOES	Optional	Optional	Optional
MOUNT TYPE	Minute Mount 2	Minute Mount 2	Minute Mount 2

*Plus vehicle mount: approx. 60 lb

**Optional accessory

HS



PLOW TYPE	STRAIGHT	STRAIGHT
BLADE WIDTH	6' 8" (2.00 m)	7' 2" (2.10 m)
BLADE HEIGHT	23 ½" (59.70 cm)	23 ½" (59.70 cm)
BLADE THICKNESS	16 ga (1.50 mm)	16 ga (1.50 mm)
TRIP SPRINGS	2	2
RIBS	6	6
PLOWING WIDTH (FULL ANGLE)	5' 11" (1.80 m)	6' 4 ½" (1.90 m)
APPROX. WEIGHT*	290 lb (132 kg)	297 lb (135 kg)
CUTTING EDGE	¼" x 5" (0.60 cm x 12.70 cm)	¼" x 5" (0.60 cm x 12.70 cm)
WEAR SHOES	Optional	Optional

*Not including vehicle mount

TRAILBLAZER™



PLOW TYPE	UTV – V-PLOW	UTV – STRAIGHT
BLADE WIDTH	6' (1.83 m)	6' (1.83 m)
BLADE HEIGHT	At Center: 25 ¾" (65.40 cm) At End: 29 ¼" (74.29 cm)	23 ½" (59.7 cm)
BLADE THICKNESS	14 ga (1.90 mm)	14 ga (1.90 mm)
TRIP SPRINGS	2	2
RIBS	6	4
LIFT CYLINDER	1½" x 6" (3.81 cm x 15.24 cm)	1½" x 6" (3.81 cm x 15.24 cm)
ANGLING RAMS	1" x 8 ¾" (2.54 cm x 22.23 cm)	1" x 7" (2.50 cm x 18.00 cm)
PLOWING WIDTH*** (FULL ANGLE)	Full Angle: 5' 0" (1.52 m) Scoop: 4' 7" (1.39 m) Full V: 5' 0" (1.52 m)	5' 4" (1.60 m)
APPROX. WEIGHT*	354 lb (160 kg)	261 lb (118 kg)
CUTTING EDGE	¼" x 5" (0.64 cm x 12.70 cm)	¼" x 5" (0.64 cm x 12.70 cm)
WEAR SHOES	Optional	Optional
MOUNT TYPE	UTV Mounting System	UTV Mounting System

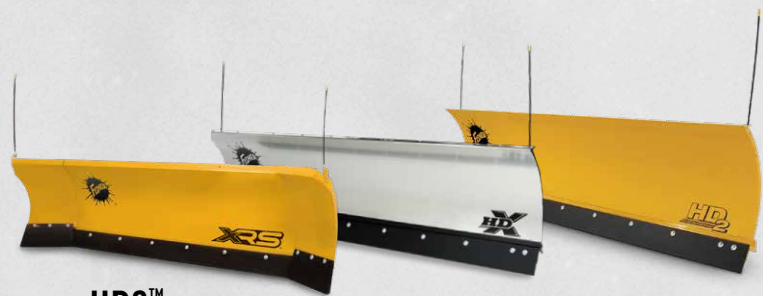
*Plus vehicle mount

***TRAILBLAZER UTV V-Plow: For UTVs with a wider wheelbase, width can be adjusted to:
5' 6" (1.68 m) full angle, 5' 1" (1.55 m) scoop, 5' 6" (1.68 m) full V

Specifications subject to change without prior notice. Please visit fisherplows.com for the most current specifications.



SPECIFICATIONS CONT.



	XRS™	HDX™	HD2™				
PLOW TYPE	SKID-STEER	SKID-STEER	SKID-STEER	SKID-STEER	SKID-STEER	SKID-STEER	SKID-STEER
BLADE WIDTH	Scoop: 8' 7" (2.60 m) Wings Pinned: 9' 8" (2.90 m)	8' (2.44 m)	9' (2.74 m)	7' 6" (2.29 m)	8' (2.44 m)	8' 6" (2.59 m)	9' (2.74 m)
BLADE HEIGHT	29 1/2" (75.00 cm)	29" (73.66 cm)	29" (73.66 cm)	29" (73.66 cm)	29" (73.66 cm)	29" (73.66 cm)	29" (73.66 cm)
BLADE THICKNESS	12 ga (2.66 mm)	14 ga (1.90 mm)	14 ga (1.90 mm)	12 ga (2.66 mm)	12 ga (2.66 mm)	12 ga (2.66 mm)	12 ga (2.66 mm)
TRIP SPRINGS	4	4	4	3	4	4	4
RIBS	8	8	8	10	10	10	10
ANGLING RAMS	1 1/2" x 10" (3.81 cm x 25.00 cm)	1 1/2" x 12" (3.81 cm x 30.48 cm)	1 1/2" x 12" (3.81 cm x 30.48 cm)	1 1/2" x 12" (3.81 cm x 30.48 cm)	1 1/2" x 12" (3.81 cm x 30.48 cm)	1 1/2" x 12" (3.81 cm x 30.48 cm)	1 1/2" x 12" (3.81 cm x 30.48 cm)
PLOWING WIDTH (FULL ANGLE)	7' 10" (2.40 m)	7' 2" (2.19 m)	8' 1" (2.46 m)	6' 9" (2.05 m)	7' 2" (2.19 m)	7' 7" (2.32 m)	8' 1" (2.46 m)
CUTTING EDGE	1/2" x 6" Steel (1.27 cm x 15.24 cm)	1/2" x 6" Steel (1.27 cm x 15.24 cm)	1/2" x 6" Steel (1.27 cm x 15.24 cm)	3/8" x 6" Steel (0.95 cm x 15.24 cm)	1/2" x 6" Steel (1.27 cm x 15.24 cm)	1/2" x 6" Steel (1.27 cm x 15.24 cm)	1/2" x 6" Steel (1.27 cm x 15.24 cm)
DISC SHOES	Optional	Optional	Optional	Optional	Optional	Optional	Optional
MOUNT TYPE	Universal Skid-Steer Mounting Plate	Universal Skid-Steer Mounting Plate	Universal Skid-Steer Mounting Plate	Universal Skid-Steer Mounting Plate	Universal Skid-Steer Mounting Plate	Universal Skid-Steer Mounting Plate	Universal Skid-Steer Mounting Plate



STORM BOXX™

PLOW TYPE	SKID-STEER	SKID-STEER	BACKHOE	BACKHOE	WHEEL LOADER	WHEEL LOADER	WHEEL LOADER
BLADE WIDTH	8' (2.44 m)	10' (3.05 m)	10' (3.05 m)	12' (3.66 m)	12' (3.66 m)	14' (4.27 m)	16' (4.88 m)
APPROX. WEIGHT	710 lb (322 kg)	790 lb (358 kg)	1030 lb (467 kg)	1150 lb (521 kg)	1680 lb (762 kg)	1815 lb (823 kg)	1950 lb (884 kg)
SIDEPLATE	36" x 36" (0.91 m x 0.91 m)	36" x 36" (0.91 m x 0.91 m)	36" x 36" (0.91 m x 0.91 m)	36" x 36" (0.91 m x 0.91 m)	48" x 48" (1.21 m x 1.21 m)	48" x 48" (1.21 m x 1.21 m)	48" x 48" (1.21 m x 1.21 m)
MACHINE APPLICATION	46–70 hp	70+ hp	2WD	4WD	1.5 yd (1.37 m)	2 yd (1.82 m)	3 yd (2.74 m)
SNOW CAPACITY	7 cu yd (6.40 cu m)	9 cu yd (8.23 cu m)	9 cu yd (8.23 cu m)	11 cu yd (10.06 cu m)	15 cu yd (13.72 cu m)	18 cu yd (16.46 cu m)	21 cu yd (19.20 cu m)
MOUNT TYPE	Quick Change Attachment System	Quick Change Attachment System	Quick Change Attachment System	Quick Change Attachment System	Quick Change Attachment System	Quick Change Attachment System	Quick Change Attachment System

RB-400

PLOW TYPE	WALK-BEHIND ROTARY BROOM
EMPTY WEIGHT	238 lb (108 kg)
OVERALL DIMENSIONS	Without Blade: 72" x 40" x 42 1/2" (183.00 cm x 102.00 cm x 108.00 cm) With Blade: 80" x 40" x 42 1/2" (203.00 cm x 102.00 cm x 108.00 cm)
SPEED	Up to 2.7 mph (4.40 km/h)
FORWARD GEARS	3
REVERSE GEARS	1
BRUSH PRESSURE ADJUSTMENT	Yes
ADJUSTABLE HANDLE HEIGHT	7 Position
ENGINE	Honda® GXV 160 OHV
TIRES	Polar Trec Snow Tires
SNOW BLADE WIDTH	Wide: 40" (102.00 cm) Angled: 37" (94.00 cm)
BRUSH DIAMETER	16" (40.60 cm)
BRUSH WIDTH	40" (102.00 cm)
FUEL CAPACITY	0.5 gal (1.90 L)



WATCH YOUR OPERATION EVOLVE

Built on more than 70 years' experience battling tough New England ice storms, FISHER® spreaders are the ultimate tools in contractor-grade ice control, letting you take on—and take out—new frontiers of icy pavement.

To learn more about the full-line of FISHER spreaders, see our 2018 Spreader Brochure or visit fisherplows.com.



Specifications subject to change without prior notice. Please visit fisherplows.com for the most current specifications.



Fisher Engineering | 50 Gordon Drive | Rockland, Maine 04841

Fisher Engineering reserves the right under its product improvement policy to change construction or design details and furnish equipment when so altered without reference to illustrations or specifications used. Fisher Engineering or the vehicle manufacturer may require or recommend optional equipment for snow removal. Do not exceed vehicle ratings with a snowplow. This product is manufactured under the following US patents: 6,408,549; 6,944,978; 7,400,058; 7,430,821; 7,681,334; 7,737,576; 7,797,859; CAN patents 2,184,922; 2,229,783; 2,356,036 and other patents pending. Fisher Engineering offers a limited warranty on all snowplows and accessories. See separately printed page for this important information. The following are registered(®) and unregistered(™) trademarks of Douglas Dynamics, LLC: FISHER®, Fish-Stik®, HD2™, HDX™, HT Series™, INTENSIFIRE™, Minute Mount®, Minute Mount® 2, POLY-CASTER™, POLY-CASTER™ UTV, QUICK-CASTER™ 300W, SECURITY GUARD™, SnoFoil®, SPEED-CASTER™ 525 & 900, STEEL-CASTER™, STORM BOX™, STORM GUARD™, TRAILBLAZER™, XLS™, XRS™, XtremeV™ and XV2™.

© 2018 Douglas Dynamics, LLC
All rights reserved.

A DIVISION OF FISHER, LLC



fisherplows.com



Printed in U.S.A.
Form No. 77024 — AU18