



ZELIENOPE

SOMERSET

HARRISBURG



STORM & SEWER

NEW | USED | RENTAL

The Solutions You Trust Since 1963



CELEBRATING 60 YEARS IN BUSINESS

*Lead distributor of
municipal, truck body, and
environmental equipment.*

- *Street & Road Maintenance*
- *Storm & Sewer Water Maintenance*
- *Underground Utility*
- *Snow Removal*
- *Refuse & Recycling*
- *Airport Maintenance*
- *A&H Bodies*





COMPANY OVERVIEW

A&H was founded in 1963, and is the region's leading distributor of municipal, truck body, and environmental equipment solutions and products. Headquartered in Zelienople, Pennsylvania and with two additional locations in Somerset and Harrisburg, A&H combines top-quality products and parts with expert, reliable support services to meet the needs of our customers throughout Pennsylvania and West Virginia. A&H Equipment Co. is raising the standard in customer care and is considered the most dependable and most reliable equipment distributor. A&H redefines what it means to supply the best solution for the road ahead. A&H is ranked in the top 5% of dealers in the United States by Satisfyd.com for its customer satisfaction.

SERVICE DEPARTMENT

At A&H, we have a full-service staff available at all three locations to continue the high-quality standards of meeting customer needs. From parts to repairs to operator training, our service staff will make sure the equipment not only works but stays operating. For the convenience of your crew, we provide on-site training and demonstration to help you get the job done safely.

Factory Certified Technicians



PARTS DEPARTMENT

The A&H Parts Team is ready to help you find the right part today! We keep extensive inventories of OEM parts in our three branches and can assist with locating competitor parts and specialty items as well. All Parts employees are trained to meet your needs in order to provide the right part to minimize downtime and maximize unit operation. Pick up or delivery available.

24 Hour Online Parts Ordering



RENTAL DEPARTMENT

Long-term and short-term rentals are not a problem for your industry's needs. Our rental fleet is always growing to provide options that are tailored to exceed your expectations and maximize your budget. Our team works closely with your organization to develop solutions that are dependable and accommodating to help you get your job done efficiently.

Rental Units Available



"The Solutions You Trust Since 1963"

CONTACT US
800.753.7566
ahequipment.com



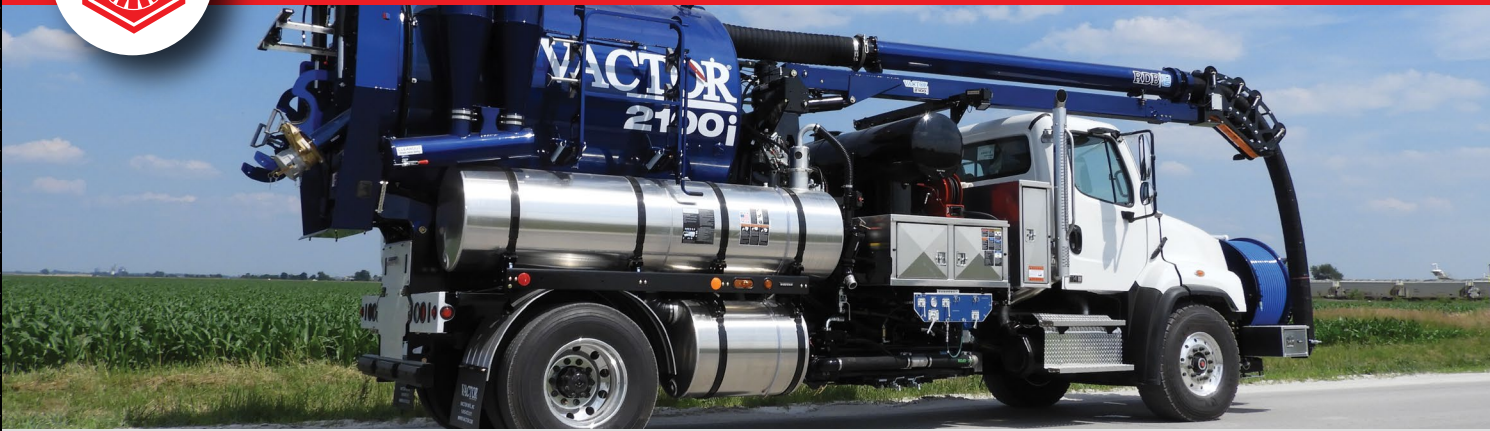
READ THE ARTICLE ABOUT OUR
60 YEARS IN BUSINESS
Construction in Focus
MAGAZINE

SCAN ME





STORM & SEWER



LEADER IN THE INDUSTRY

Do you have specific roadway needs? Our award winning sales team can help customize purchase packages or rental packages with the option of planned maintenance to keep you worry free. As always we provide on-site demonstrations before developing the right solution for your job completion.



Combination Sewer Cleaners

- Vactor 2100i PD
- Vactor 2100i Fan
- Vactor 2103
- Vactor iMPACT

Catch Basin Sewer Cleaners

- Vactor 2100i CB

Sewer Water Jetters

- Vactor Ramjet Truck Mounted Jetter



Sewer Water Jetters

- US Jetting Trailer & Skid Mount



Repair Sleeve

- Quick-Lock Repair Sleeve



Sewer Cleaning Nozzles

- Nozzles - Reaper Revolution



Sewer Cleaning Nozzles

- Nozzles



Inspection Crawlers

- Envirosight ROVER X
- Envirosight ROVER X SAT II

Inspection Zoom Cameras

- Quickview Air HD

Push Cameras

- Verisight Ultra

Inspection Video Nozzles

- Jetscan

Inspection Manhole Camera

- QV360

Inspection Reporting

- WinCan Software

Inspection Mobility

- Truck Build Outs & Outpost



Safety/Hearing Protection

- APX377 & APX379 (Bluetooth)



Single, Tandem & Tri-Axle Dump Bodies & More!



Read More Here!



SCAN ME





VACTOR
Subsidiary of Federal Signal Corporation

Combination Sewer Cleaners

2100i PD



- Exclusive Vactor Jet Rodder® water pump with jack hammer action.
- The powerful vacuum source can be either a centrifugal compressor (fan) or positive displacement blower (PD) depending on application.
- With the Modul-Flex design, numerous-sized debris tanks from 3 to 15 cubic yards (2.3 - 11.5 cu m), and water capacities from 500 to 1,500 gallons (1,893 - 5,678 liters) are available.



VACTOR
Subsidiary of Federal Signal Corporation

Combination Sewer Cleaners

2100i FAN



- The Vactor Single Stage Fan System is for all around service, choose a single engine, single fan model Vactor's fan system is the right choice for all-around sanitary and storm sewer cleaning.
- Whether equipped with a single fan system, our lightweight, perfectly balanced aluminum fan provides superior performance to handle your toughest jobs.
- Standard 60 inch (1524 mm) high dump enables you to unload debris into roll-offs up to 5-feet (1.524 m) high without requiring a lift or ramp.



VACTOR
Subsidiary of Federal Signal Corporation

Combination Sewer Cleaners

2103 iMPACT



The Vactor 2103 is ideal for municipalities requiring a sewer cleaning truck for fast response or as an emergency backup vehicle. Small communities use it as a lower-cost alternative to perform regular maintenance and repair storm water lines.

- Fully hydraulic boom and pickup hose
- Easy load, fast-dump debris body
- Powerful positive displacement vacuum
- Multi-stage blower filtration system
- Exclusive JetRodder® water pump
- Front-mounted hose reel



VACTOR
Subsidiary of Federal Signal Corporation

Combination Sewer Cleaners

2100i WATER RECYCLER



- ABSOLUTE water filtration to 100 micron particle sizes - ELIMINATES most abrasive particles to protect the water pump, hoses, nozzles, and the sewer lines
- 5-Stage filtration system - system uniquely combines settling, centrifugal separation, and absolute filtration to 100 micron**
- Simultaneous operation - Recycles water while cleaning lines
- Stainless Steel construction - All valves, filters, screens, and piping on the recycling system are stainless steel
- Self-Cleaning - The absolute classification filter is cleaned automatically





STORM & SEWER



VECTOR
Authority of Federal Signal Corporation

Catch Basin Sewer Cleaners

2100i CB



- When a dedicated catch basin cleaner is needed, the Vactor 2100 Series CB (catch basin cleaner) is equipped with a highly maneuverable boom and powerful vacuum source to move from basin to basin, cleaning out rocks, dirt, leaves, litter and other debris that can clog the storm sewers and prevent them from working properly during rain events.



VECTOR
Authority of Federal Signal Corporation

Sewer Water Jetters

RAMJET TRUCK & MOUNTED JETTER



- The rear hose reel can rotate a total of 180 degrees, 90 degrees to curb side and 90 degrees to street side providing direct alignment to manholes and the shroud protects the system from the elements making cleaning in cold weather possible.
- IntuiTouch innovative technology provides a one-touch in-cab control option, at the touch of a button, for PTO activation and an ergonomic control panel combining all cleaning system functions into one.
- Park-N-Clean is a system that allows the operator to park near the manhole and begin cleaning with a minute or two - requiring

US JETTING

Sewer Water Jetters

TRAILOR & SKID MOUNT



- The 4018 is the only unit with a true run-dry plunger pump. This unit can work in pipes ranging from 1" - 24" and can be fitted with tanks sized 100 - 750 gallons or larger if required. The standard unit comes equipped with 500' of 1/2" hose.
- The 4025 [4000 PSI 25 GPM] is US Jetting's most versatile jetting machine. With 4000PSI pressure it maintains the cutting power of a 4018, but magnifies the flushing power with the added gallons per minute. This gives it endless applications from grease and root cutting, to culvert cleaning and storm drain jetting. The 4025 unit can work in pipes ranging from 1" - 48" and come standard equipped with 500 ft of 5/8" hose.
- The 3040 [3000 PSI 40 GPM] is an industrial strength machine designed to clean large sewers or storm drains. Powered by a 99 HP Kubota diesel engine, the 3000 PSI 40 GPM unit is an ideal machine for municipalities and contractors. It is available with up to 750 gallons of water storage on a tandem axle trailer and up to 1000 gallons mounted on certain trucks. The unit comes standard with one hydraulic powered reel with 500' (150 M) of 3/4" hose. It is also available with a second reel that can be fitted with 500' of 1/2" hose.

A&H
EQUIPMENT

rentals@ahequipment.com | sales@ahequipment.com



Looking for a long-term or short-term rental?

“Over 14,000 units have been sold worldwide, far more than any other sewer cleaner. A Proven Leader. Work Assured with a Vector.”



Vector 2100i Combo Unit

Rental Purchase Options (RPO) Available
- Included Preventative Maintenance.

Operator Training with Like-New Equipment
- Onsite training & overview equipment



VECTOR
Subsidiary of Federal Signal Corporation

RENTALS
CONTACT
800. 753. 7566
rentals@ahequipment





STORM & SEWER



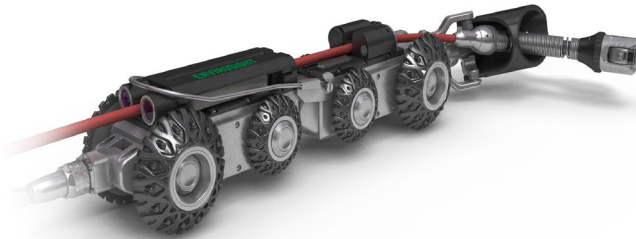
ENVIROSIGHT

Inspection Crawlers

ROVER X



- Steerable 6-wheel drive maneuvers past obstacles.
- Modular design adapts to pipe of any size, condition and material.
- Compact system footprint can be deployed from any size vehicle.
- Digital controls automatically update to the latest features and support self-diagnostics.
- Scalable design supports lateral launch, side-scanning and laser profiling.
- WinCan VX included with every system purchase.



ENVIROSIGHT

Inspection Crawlers

ROVER X SAT II



- Crawl 984' at up to 98 fpm in lines 6" and larger.
- Launch 147' into laterals at up to 23 fpm in lines 4" and larger.
- Patent-pending belt-driven mechanism maximizes launch rod force and minimizes wear.
- Pan 360 degrees, +150 degree tilt, and zoom capability.
- Maneuver to obstacle launch points with Otraction steerable 8-wheel drive.
- Rear-facing camera assists cable during reverse crawl; twin sonde facilitates location.



ENVIROSIGHT

Inspection Zoom Cameras

QUICKVIEW AIR HD WIRELESS



- Diagnosing emergency call-outs.
- Avoiding confined space entry.
- Conserving CCTV resources.
- Performing a rapid, system-wide assessment.
- Prioritizing CCTV, cleaning and rehab activities.
- Viewing pipes too deteriorated for a crawler.



ENVIROSIGHT

Push Cameras

VERISIGHT ULTRA



- 200ft or 330ft cable length options.
- Wirelessly upload inspections to WinCan Web.
- High-resolution video | 1080p Full HD Touchscreen monitor.
- Self-leveling pan/tilt camera.
- Compact design and built for rural terrain.
- Adjustable height handle and table mount.



ENVIROSIGHT Inspection Video Nozzles

JETSCAN NOZZLE



- Two sizes handle pipes down to 6".
- Cable-free design means no secondary reel or dropped signals.
- Jetscan simply threads on to any jetter hose.
- Compact design addresses a broader range of applications.
- Captured footage is viewed immediately after on a tablet.



ENVIROSIGHT Inspection Manhole Camera

QV360



- 1 Manhole Every 5 Minutes
- Lightweight design empowers single operator to run
- Conduct up to 80 assessments per day
- Stream results to cloud for secure storage | 3D modeling
- Auto-generated Report



ENVIROSIGHT Inspection Reporting • Cloud-Based Flexibility

WINCAN VX SOFTWARE



- **Comply:** Gather standards-compliant data for analysis, reporting and export. WinCan supports more than 50 defect catalogs (including PACP/MACP and WRc).
- **Analyze:** Run queries on any combination of criteria to understand maintenance needs. Get results in reports, on a map, or as raw data.
- **Share:** Publish completed inspections securely to the cloud, where clients can view them instantly using a web browser.



- **Report:** Generate information-rich reports using filtered data, photos, and schematic illustrations.
- **Integrate:** Connects with any inspection equipment, and interfaces with all major municipal databases and GIS platforms.
- **Decide:** Extract the actionable intelligence you need to make critical maintenance decisions.
- **Budget:** Allocate resources based on infrastructure condition, make budgetary projections, anticipate maintenance, and manage inspection work flow.

ENVIROSIGHT Inspection Reporting

TRUCK BUILD OUTS & OUTPOST



Studio Amenities

- Bulkhead wall with smoked-glass window and pass-through door.
- Laminate desk with wall-mount monitors.
- Hinged storage bench with cushion.
- Lighted latching cabinetry and file drawer.
- Wall outlets, and wall switches for interior LED lighting.
- Wall-mount controls for arrow boards, strobes and power source.
- Ceiling air conditioning and heat (some models).
- Carpeted walls with rubber floor.



Work Bay

- Custom laminate cabinetry.
- Built-in heavy duty tool drawers.
- FRP walls and ceiling with rubber floor.



Outpost

- Welded Aluminum Construction has epoxy finish
- Swing-up hood shields operator
- Blinders and flat interior reduced glare
- Shelving holds video/crawler gear
- Drawer compartments hold 500lbs





STORM & SEWER



Repair Sleeve

QUICK-LOCK REPAIR SLEEVE



Positioned by a crawler and expanded pneumatically, Quick-Lock's rehab sleeve provides structural, trenchless pipe repair with heavy-gauge 316L stainless steel, plus infiltration abatement with an EPDM rubber gasket. Quick-Lock solves:

- Infiltration
- Longitudinal cracks
- Circumferential cracks
- Holes
- Separated joints
- Offset joints
- Abandoned laterals
- Root intrusion

Need same day shipment?
We stock all common sizes and can quickly turnaround orders for your convenience! Contact us today!
800.753.7566



Sewer Cleaning Nozzles

NOZZLES



The design of our Rotating Jetting Nozzle is engineered specifically for water jetting applications including pipe cleaning and sewer jetting projects for the residential, municipal, industrial or contractor market. Our current line of Reaper nozzles successfully clean drains, industrial pipes, sewers, and tubes by clearing blockages, grease and roots with fewer passes, saving you time and money all while generating less wear and tear on hoses and operators.



Sewer Cleaning Nozzles

NOZZLES



KEG offers a wide range of nozzles to satisfy the most difficult pipe cleaning conditions imaginable. From our value priced Tier 1 nozzles to our patented ultra high efficiency Tier 3 nozzles, KEG nozzles get the job done fast. We tune the high efficiency nozzle jets to match your equipment giving you the best possible cleaning, while saving you time, water consumption and fuel costs.



Safety/Hearing Protection

APX377 & APX379 (Bluetooth)



APX377

Powered by the latest DECT7 wireless technology, the APX377 connects you to team members in full-duplex conversation with advanced hearing protection. With no delays, no buttons to push and no clipping or interference, the multi-channel capability of these headsets lets multiple teams operate simultaneously in the same work area. Push-to-talk or monitor virtually any portable two-way radio via a direct-wire cable connection (wired portable radio adapter required, radio not included). The APX379 adds Bluetooth technology to the features included on the APX377.





ENVIROSIGHT *ROVVER X*

ROVVER X is the one system that lets you do everything: control inspections, view and record digital video, log observations, generate reports, and link directly to asset-management software.

- Steerable 6-wheel drive maneuvers past obstacles.
- Modular design adapts to pipe of any size, condition and material.
- Compact system footprint can be deployed from any size vehicle.
- Digital controls automatically update to the latest features and support self-diagnostics.
- Scalable design supports lateral launch, side-scanning and laser profiling.
- WinCan VX included with every system purchase.

**SAFE, EASY &
ADVANCED SEWER
INSPECTION
CRAWLER**



AGILE Maneuver Past Obstacles

- Proportional steering to maximize agility.
- Zero-degree turning for pivoting and traversing curved inverts.
- Overlapping 6-wheel drive for climbing over offsets and debris.
- Wheel tread and geometry optimized for superior traction and range.
- Lightweight Kevlar cable poses minimal drag.

SMART Inspect with Intelligence

- Auto-updating pendant always supports the latest features.
- Concurrent control of multiple crawler functions (steer while tilting the camera and raising the lift).
- 6-conductor cable is easier to pull and reterminate, but has a 1000-lb break strength.
- Support for lateral launch, laser profiling, and side-scanning applications.
- Easy online updates for pendant functionality.
- View status from dozens of onboard sensors, and access lifetime operating history.

VERSATILE Adapt to Every Challenge

- 12 quick-change wheel options.
- Many accessories: motorized camera lift, auxiliary lamps, large diameter carriage.
- Three crawler body sizes address applications from 4 to 96 inches diameter.
- Support for lateral launch, laser profiling, and side-scanning applications.
- Easy online updates for pendant functionality.

ZELIENOPE

620 W. Beaver St.
Zelienople, PA 16063
P) 412.257.1160
F) 724.473.0740

SOMERSET

241 East Garrett Street
Somerset, PA 15501
P) 814.444.6403
F) 814.444.6459

HARRISBURG

1405B Hagy Way
Harrisburg, PA 17110
P) 717.724.0310
F) 717.724.0309



A&H EQUIPMENT IS A COSTARS SUPPLIER



**Street/Road Maintenance • Storm/Sewer Maintenance • Underground Utility
Snow Removal • Refuse & Recycling • Airport Maintenance • A&H Bodies**



STREET & ROAD



STORM & SEWER



UNDERGROUND
UTILITY



SNOW & ICE



REFUSE &
RECYCLING



AIRPORT



USED EQUIPMENT



A&H BODIES



PARTS & SERVICE