



ZELIENOPE

SOMERSET

HARRISBURG



UNDERGROUND UTILITY

NEW | USED | RENTAL

The Solutions You Trust Since 1963



CELEBRATING 60 YEARS IN BUSINESS

*Lead distributor of
municipal, truck body, and
environmental equipment.*

- *Street & Road Maintenance*
- *Storm & Sewer Water Maintenance*
- *Underground Utility*
- *Snow Removal*
- *Refuse & Recycling*
- *Airport Maintenance*
- *A&H Bodies*





COMPANY OVERVIEW

A&H was founded in 1963, and is the region’s leading distributor of municipal, truck body, and environmental equipment solutions and products. Headquartered in Zelienople, Pennsylvania and with two additional locations in Somerset and Harrisburg, A&H combines top-quality products and parts with expert, reliable support services to meet the needs of our customers throughout Pennsylvania and West Virginia. A&H Equipment Co. is raising the standard in customer care and is considered the most dependable and most reliable equipment distributor. A&H redefines what it means to supply the best solution for the road ahead. A&H is ranked in the top 5% of dealers in the United States by Satisfyd.com for its customer satisfaction.

SERVICE DEPARTMENT

At A&H, we have a full-service staff available at all three locations to continue the high-quality standards of meeting customer needs. From parts to repairs to operator training, our service staff will make sure the equipment not only works but stays operating. For the convenience of your crew, we provide on-site training and demonstration to help you get the job done safely.

Factory Certified Technicians



PARTS DEPARTMENT

The A&H Parts Team is ready to help you find the right part today! We keep extensive inventories of OEM parts in our three branches and can assist with locating competitor parts and specialty items as well. All Parts employees are trained to meet your needs in order to provide the right part to minimize downtime and maximize unit operation. Pick up or delivery available.

24 Hour Online Parts Ordering



RENTAL DEPARTMENT

Long-term and short-term rentals are not a problem for your industry’s needs. Our rental fleet is always growing to provide options that are tailored to exceed your expectations and maximize your budget. Our team works closely with your organization to develop solutions that are dependable and accommodating to help you get your job done efficiently.

Rental Units Available



"The Solutions You Trust Since 1963"

CONTACT US
800.753.7566
ahequipment.com



READ THE ARTICLE ABOUT OUR
60 YEARS IN BUSINESS
Construction in Focus
MAGAZINE

SCAN ME



rentals@ahequipment.com | sales@ahequipment.com



UNDERGROUND UTILITY



LEADER IN THE INDUSTRY

Do you have specific roadway needs? Our award winning sales team can help customize purchase packages or rental packages with the option of planned maintenance to keep you worry free. As always we provide on-site demonstrations before developing the right solution for your job completion.

 **TRUVAC**
by Vactor Mfg., Inc.
Hydro Excavation

 **ENVIROSIGHT**
Inspection Crawlers

 **VACTOR**
A subsidiary of Federal Signal Corporation
Hydro Excavation Accessories

 **HYDRA-FLEX**
FLUID INNOVATION
Hydro Excavation Accessories

 **Pipeline Renewal**
TECHNOLOGIES™
Repair Sleeve

Sonetics
Safety/Hearing Protection

 **Protek**
Underground Locating Equipment
Underground Locating Equipment

 **A&H BODIES**
**Single, Tandem
& Tri-Axle
Dump Bodies
& More!**



Read More
Here!



SCAN ME



rentals@ahequipment.com | sales@ahequipment.com



TRUVAC[®]

VACUUM EXCAVATORS

Looking for a long-term or short-term rental?



**RENTALS
AVAILABLE**

800.753.7566

www.ahequipment.com

rentals@ahequipment.com



Rental Purchase Options (RPO) Available

— FOR UTILITY APPLICATIONS —





UNDERGROUND UTILITY

TRUVAC[®] TRXX Hydro Excavation

The TRUVAC TRXX vacuum excavator is a compact trailer with the power and features required at a variety of job sites to perform a wide range of tasks. This non-destructive hydro excavation trailer is portable and versatile and ideal for a broad range of applications.



Performance Specifications	TRXX 500	TRXX 800
Debris Capacity	500 gallons/1900 liters	800 gallon/3028 liters
Water Capacity (standard)	200 gallons / 757 liters	400 gallons / 1514 liters
Engine	49-64 hp Kubota	49-64 hp Kubota
Blower	600 / 1000 cfm	600 / 1000 cfm
Vacuum Rating	15" Hg	15" Hg
Water Pump Volume	5 gpm / 19 lpm	5 gpm / 19 lpm
Water Pump Pressure	3000 psi / 207 bar	3000 psi / 207 bar
Length	243 inches / 6.17 meters	269 inches / 6.83 meters
Width	98 inches / 2.49 meters	98 inches / 2.49 meters
Height	103 inches / 2.62 meters	103 inches / 2.62 meters
Weight (empty)	9,000 lbs / 4733 kg	10,000 lbs / 4536 kg
Trailer GVWR	14,000 lbs / 6350 kg	20,000 lbs / 9072 kg



TRUVAC[®] APXX Hydro Excavation



APXX is the peak performer of heavy-duty vacuum excavators. Built to operate in the most rugged climates and environments, it reaches new heights by delivering a combination of standard features that make this machine rise to a class of its own.

Performance Specifications	APXX
Debris Capacity	12 yd standard / 14 yd option
Water Capacity (standard)	1200 Gallons
Blower	5250 cfm
Vacuum Rating	27" Hg
Water Pump Volume	10 gpm std / 20 gpm option
Water Pump Pressure	3000 psi / 207 bar
Length	58'
Width	103.75"
Height	13' 4"
Weight (empty)	46,120 lbs.
STANDARD FEATURES	APXX
Back-up camera	✓
7' Extendable Boom	✓
Boom/Body Out of Position Light/Alarm	✓
Heated Cross Cabinet w/ Water Components & Tool Storage	✓
OPTIONS	APXX
Air Excavation Package	185 cfm x 110 psi
Water Healer	400/800K RTU
Multiple Axle Configurations	Tandem w/ Pusher, Tri-drive, Spiff 23
14 yd debris body	✓

TRUVAC[®] Paradigm[®] Hydro Excavation



Paradigm[®]

The Paradigm[®] lets you excavate around utilities with the utmost safety and efficiency. Paradigm[®] is customer-inspired, built to satisfy the most stringent safe-digging requirements, and backed by the Vactor[®] Mfg., Inc. commitment to quality.

Axle Configuration	Debris Capacity (U.S. Gal)	Minimum HP	Overall Length	Cab to Axle	Overall Height	Overall Width	Rated Gross Vehicle Weight (GVW) (lbs)	Complete Unit (Empty)*			Full Water (No debris)*			Federal Bridge Law Carrying Capacity (Empty water)*
								Front Axle	Rear Axle	GVW	Front Axle	Rear Axle	GVW	
Single (Class 6 chassis, Non-CDL)	675	325	298"	126"	126"	102"	26,000	8,560	11,480	20,040	9,760	13,280	23,040	6,000
Single (Class 7 chassis)	675	325	298"	126"	126"	102"	33,000	8,560	11,480	20,040	9,760	13,280	23,040	8,200



TRUVAC[®] HXX[®] 824 / FULL SIZE Hydro Excavation



HXX[®] 824 / FULL SIZE

HXX[®] is the result of vacuum excavation research, customer input, testing and industry experience. Created by Vactor[®] Manufacturing, Incorporated, no job is too big or too tough for these vacuum excavators to tackle.

Axle Configuration	Debris Capacity (yds)	Minimum HP	Overall Length	Cab to Axle	Overall Height	Overall Width	Rated Gross Vehicle Weight (GVW) (lbs)	Complete Unit (Empty)*			Full Water (No debris)*			Federal Bridge Law Carrying Capacity (Empty water)*
								Front Axle	Rear Axle	GVW	Front Axle	Rear Axle	GVW	
Tandem	12	370	426"	216"	157"	102"	66,000	14,500	24,250	38,700	17,350	31,400	48,750	9,200
Tandem w/ Pusher	12	370	426"	216"	157"	102"	79,500	14,900	25,300	40,200	14,850	35,400	50,250	15,600
Tandem w/ Pusher & Tag	12	370	426"	201"	157"	102"	86,000	15,450	26,300	41,750	17,700	34,050	51,800	21,850





FLXXIBILITY DRIVES PROFITABILITY



Learn More!





UNDERGROUND UTILITY



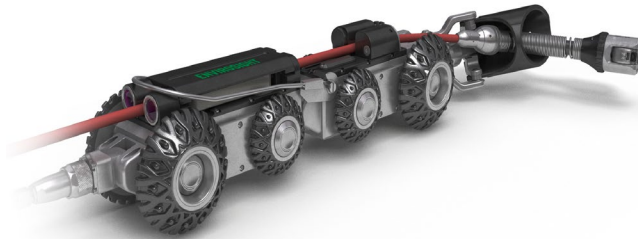
ENVIROSIGHT

Inspection Crawlers

ROVER X



- Steerable 6-wheel drive maneuvers past obstacles.
- Modular design adapts to pipe of any size, condition and material.
- Compact system footprint can be deployed from any size vehicle.
- Digital controls automatically update to the latest features and support self-diagnostics.
- Scalable design supports lateral launch, side-scanning and laser profiling.
- WinCan VX included with every system purchase.



ENVIROSIGHT

Inspection Crawlers

ROVER X SAT II



- Crawl 984' at up to 98 fpm in lines 6" and larger.
- Launch 147' into laterals at up to 23 fpm in lines 4" and larger.
- Patent-pending belt-driven mechanism maximizes launch rod force and minimizes wear.
- Pan 360 degrees, +150 degree tilt, and zoom capability.
- Maneuver to obstacle launch points with Octraction steerable 8-wheel drive.
- Rear-facing camera assists cable during reverse crawl; twin sonde facilitates location.



ENVIROSIGHT

Inspection Zoom Cameras

QUICKVIEW AIR HD WIRELESS



- Diagnosing emergency call-outs.
- Avoiding confined space entry.
- Conserving CCTV resources.
- Performing a rapid, system-wide assessment.
- Prioritizing CCTV, cleaning and rehab activities.
- Viewing pipes too deteriorated for a crawler.



ENVIROSIGHT

Push Cameras

VERISIGHT ULTRA



- 200ft or 330ft cable length options.
- Wirelessly upload inspections to WinCan Web.
- High-resolution video | 1080p Full HD Touchscreen monitor.
- Self-leveling pan/tilt camera.
- Compact design and built for rural terrain.
- Adjustable height handle and table mount.

UNDERGROUND UTILITY



ENVIROSIGHT Inspection Video Nozzles

JETSCAN



- Two sizes handle pipes down to 6".
- Cable-free design means no secondary reel or dropped signals.
- Jetscan simply threads on to any jetter hose.
- Compact design addresses a broader range of applications.
- Captured footage is viewed immediately after on a tablet.



ENVIROSIGHT Manhole Inspection Camera

QV360



- 1 Manhole Every 5 Minutes
- Lightweight design empowers single operator to run
- Conduct up to 80 assessments per day
- Stream results to cloud for secure storage | 3D modeling
- Auto-generated Report



ENVIROSIGHT Inspection Reporting / Cloud Based Flexibility

WINCAN VX SOFTWARE



- **Comply:** Gather standards-compliant data for analysis, reporting and export. WinCan supports more than 50 defect catalogs (including PACP/MACP and WRc).
- **Analyze:** Run queries on any combination of criteria to understand maintenance needs. Get results in reports, on a map, or as raw data.
- **Share:** Publish completed inspections securely to the cloud, where clients can view them instantly using a web browser.



- **Report:** Generate information-rich reports using filtered data, photos, and schematic illustrations.
- **Integrate:** Connects with any inspection equipment, and interfaces with all major municipal databases and GIS platforms.
- **Decide:** Extract the actionable intelligence you need to make critical maintenance decisions.
- **Budget:** Allocate resources based on infrastructure condition, make budgetary projections, anticipate maintenance, and manage inspection work flow.

ENVIROSIGHT Inspection Mobility

TRUCK BUILD OUTS & OUTPOST



Studio Amenities

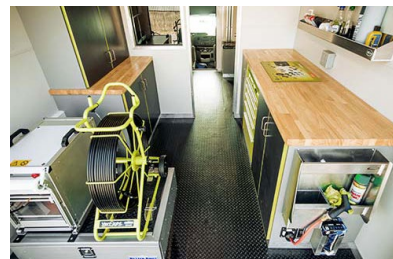
- Bulkhead wall with smoked-glass window and pass-through door.
- Laminate desk with wall-mount monitors.
- Hinged storage bench with cushion.
- Lighted latching cabinetry and file drawer.
- Wall outlets, and wall switches for interior LED lighting.
- Wall-mount controls for arrow boards, strobes and power source.
- Ceiling air conditioning and heat (some models).
- Carpeted walls with rubber floor.

Work Bay

- Custom laminate cabinetry.
- Built-in heavy duty tool drawers.
- FRP walls and ceiling with rubber floor.

Outpost

- Welded aluminum construction has epoxy finish
- Swing-up hood shields operator
- Blinders and flat interior reduce glare
- Shelving holds video/crawler gear
- Drawer compartments hold 500lbs





UNDERGROUND UTILITY

VACTOR

Hydro Excavation Accessories

HXXpose™ - 1000 PSI



- The HXXpose™ nozzle features a minimum inlet pressure of 1,000 PSI (69 bar) and a maximum water temperature of 180 degrees F (82 degrees C). For extended life and lower operating costs, rebuild kits are available.
- The rugged HXXpose™ nozzle features high-wear resistant, tungsten carbide internals and a ½-inch, corrosion-resistant FNPT stainless steel casing to hold up against the harshest environments and conditions. The nozzle's urethane outer coating protects the operator and underground utilities on the site from electrical conduction.



RIPSAW™

Hydro Excavation Accessories

ROTATING TURBO NOZZLE – 3200 PSI



- Zero-degree impact with circular 18-degree coverage area
- Flow straightening technology increases impingement for faster digging
- 5 times the life of competitive options
- Available in nozzle size #3.0 – #12.0
- **Applications:** Potholing / Daylighting, Debris Removal, Piling Hole, Frac Tank Cleaning



• Spray Pattern:



MACHETE™

Hydro Excavation Accessories

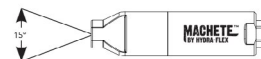
LINEAR OSCILLATING NOZZLE



- Zero-degree impact with 15-degree straight line coverage area
- Several times longer life compared to rotating nozzles
- Impingement impact maintained over 48"
- Available in nozzle sizes #3.0 – #10.0
- **Applications:** Bell Holing, Sloping, Trenching, Caliche and other hard soils



• Spray Pattern:



SWITCH BLADE™

Hydro Excavation Accessories

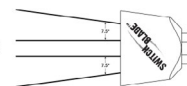
STATIC ZERO-DEGREE NOZZLE



- Zero-Degree nozzle available in single (Ace™), dual (Duce™), or quadruple (Quad™) nozzle arrangement
- Individual, replaceable nozzle pills allow for change of flow rate and pattern
- Customizable nozzle configurations from nozzle size #1.0 to #48.0
- **Applications:** Trenching, Starting Tool, Compact Soils, Precision Digging



• Spray Pattern:





Repair Sleeve

QUICK-LOCK REPAIR SLEEVE



Positioned by a crawler and expanded pneumatically, Quick-Lock's rehab sleeve provides structural, trenchless pipe repair with heavy-gauge 316L stainless steel, plus infiltration abatement with an EPDM rubber gasket. Quick-Lock solves:

- Infiltration
- Longitudinal cracks
- Circumferential cracks
- Holes
- Separated joints
- Offset joints
- Abandoned laterals
- Root intrusion



Need same day shipment?
We stock all common sizes and can quickly turnaround orders for your convenience! Contact us today!
800.753.7566

Sonetics

Safety/Hearing Protection

APX377 & APX379 (Bluetooth)



APX377

Powered by the latest DECT7 wireless technology, the APX377 connects you to team members in full-duplex conversation with advanced hearing protection. With no delays, no buttons to push and no clipping or interference, the multi-channel capability of these headsets lets multiple teams operate simultaneously in the same work area. Push-to-talk or monitor virtually any portable two-way radio via a direct-wire cable connection (wired portable radio adapter required, radio not included). The APX379 adds Bluetooth technology to the features included on the APX377.



Buzz Box

Multi-Frequency Line Exciter

Multi-Frequency Line Exciter



- The BuzzBox Line Exciter will make tracing metallic lines with our LineFinder 2200 a breeze.
- Connect to your line conductively using the cable clamps provided.
- Durable watertight Pelican case with easy to carry handle
- Cable clamps, ground rod and batteries included
- LED's indicate the signal strength and battery life
- Inductive and Conductive modes
- If tracing live electrical or telephone lines use the inductive mode by placing the BuzzBox in close proximity to the line you are trying to trace.
- This will allow you to trace the live lines safely and you won't have to disrupt service.



Linefinder

Multi-Frequency Line Exciter

LineFinder 2200 Receiver / LineFinder 2200 Kit



Our do it all receiver

- LCD screens come with automatic backlight and LED functions
- 4 Position switch helps you navigate through the screens with ease
- Handle vibration helps guide you through the steps to locating both sounds and lines with accurate position as well as precise depth
- Headphone jack is perfect for locating on a noisy site
- Low battery indicator so you know when it's time to change out your batteries



ZELIENOPE

620 W. Beaver St.
Zelienople, PA 16063
P) 412.257.1160
F) 724.473.0740

SOMERSET

241 East Garrett Street
Somerset, PA 15501
P) 814.444.6403
F) 814.444.6459

HARRISBURG

1405B Hagy Way
Harrisburg, PA 17110
P) 717.724.0310
F) 717.724.0309



A&H EQUIPMENT IS A COSTARS SUPPLIER

Sourcewell 



**Street/Road Maintenance • Storm/Sewer Maintenance • Underground Utility
Snow Removal • Refuse & Recycling • Airport Maintenance • A&H Bodies**



STREET & ROAD



STORM & SEWER



UNDERGROUND
UTILITY



SNOW & ICE



REFUSE &
RECYCLING



AIRPORT



USED EQUIPMENT



A&H BODIES



PARTS & SERVICE