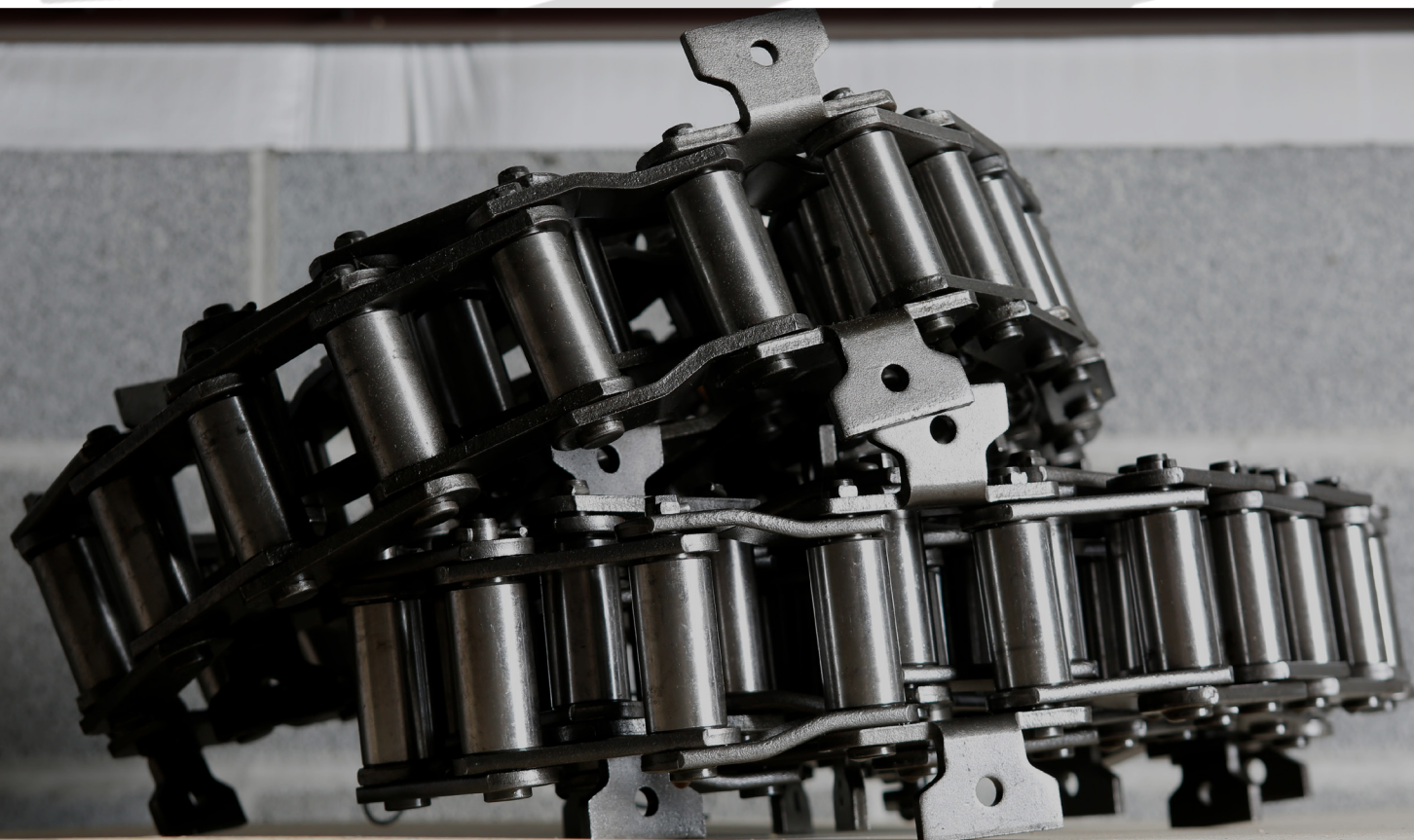


A&H EQUIPMENT

ZELIENOPE SOMERSET HARRISBURG



PARTS CATALOG

800.753.7566

parts@ahequipment.com

ahequipment.com



SCAN TO VIEW DIGITALLY

COMPANY OVERVIEW

Proudly, we are celebrating over 60 years in the business. A&H Equipment Company is the region's leading distributor of municipal, contractor, truck body, and environmental product solutions. Headquartered in Zelienople, PA, we combine quality products and parts with expert support services to meet the needs of our clients throughout PA and WV. With another full-service location in Harrisburg, PA, and our very own truck upfitting facility, A&H Bodies, in Somerset, PA, we have a solution for YOU to get the job done.



A&H is ranked in the top 5% of dealers in the U.S. with Satisfyd.com. We strive to continue to raise the bar in providing exceptional customer service.



Solutions YOU Trust Since 1963

A&H Equipment Company is proud to represent our industry leading manufacturers. We take pride in our ongoing customer support and training, throughout the entire process in receiving your new investment. Our factory-certified service technicians and trained parts specialists will always be there to assist you! A&H offers solutions to meet your needs from new equipment, used equipment, and even rental equipment. Interested in low cost financing? We have a SOLUTION for YOU!



800.753.7566
ahequipment.com

PARTS & SERVICE

A&H offers a wide variety of parts and accessories for Elgin Street Sweepers, Vector Sewer Cleaners, TRUVAC Hydro Excavators, Envirosight Sewer Inspection Cameras, Petersen Industries Grapple Trucks, New Way & Loadmaster Refuse Trucks, snow and ice, and more. We keep extensive inventories of OEM parts in our three branches and can assist with locating competitor parts and specialty items as well. All Parts employees are trained to meet your needs in order to provide the right part to minimize downtime and maximize unit operation.

We look forward to working with you for all your parts needs.
Call us today at 800.753.7566 for assistance.

A&H
EQUIPMENT



Factory-Certified Service Technicians

At A&H Equipment Company, we have a full-service staff available at all our locations to continue the high-quality standards of meeting customer needs. From parts to repairs to operator training, our factory certified staff is there to support YOU! We will make sure the equipment not only works but stays operating. For the convenience of your crew, we provide on-site training and demonstration to help you get the job done safely. Our trained technicians are available for road calls to repair equipment if necessary.

parts@theequipment.com

PARTS SUMMARY



STREET & ROAD

6



UNDERGROUND UTILITY

13



STORM & SEWER

19

SEWER CLEANING

24

CAMERA INSPECTION

26

NOZZLES

28

PIPE REPAIR

32



TOOLS

33



REFUSE & RECYCLING

39



SNOW & ICE

40



A&H BODIES

41



ADDITIONAL PRODUCTS

42



CONTACT US

43



800.753.7566
ahequipment.com

MY EQUIPMENT

EQUIPMENT MAKE & MODEL: _____

EQUIPMENT SERIAL #: _____

CHASSIS MAKE & MODEL: _____

VIN #: _____

NOTES:

EQUIPMENT MAKE & MODEL: _____

EQUIPMENT SERIAL #: _____

CHASSIS MAKE & MODEL: _____

VIN #: _____

NOTES:



STREET & ROAD



MYDEALER

24 Hour Online Parts Ordering Available!

Whether in the office or out in the field you can access your account 24/7 with MYDEALER. This online management tool is designed for your convenience and will allow you the ability to...

- ◇ **Order Parts**
- ◇ **Request Service**
- ◇ **Check Repair Status**
- ◇ **Print Invoices**
- ◇ **View Quotes**
- ◇ **And... MORE!**

Sign Up TODAY!



***COMPETITOR PARTS AVAILABLE UPON REQUEST**



TUBE BROOMS

Available in:

- Standard - Single Wrap Poly
- Heavy-Duty - Double Wrap Poly
- Combination - 50% Poly / 50% Wire



Construction: Poly or Poly/Wire filament wraps spirally wound over a Solid Steel Core for a one-piece broom unit for use in various applications.

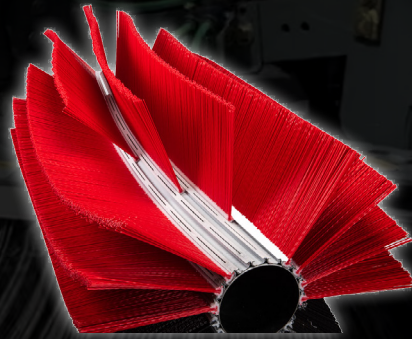
STRIP BROOMS

Option to Main Tube Brooms

Strip Broom Mandrel Required - 100 % Recyclable

Available in:

- 58" | 60" | 66" Lengths
- Mandrel Cores



Construction: Poly filament strips for replacement on a mandrel that stays on the machine for use in all applications.

WAFER SECTIONS

Available in:

- Poly
- Wire
- Combination - 50% Poly / 50% Wire

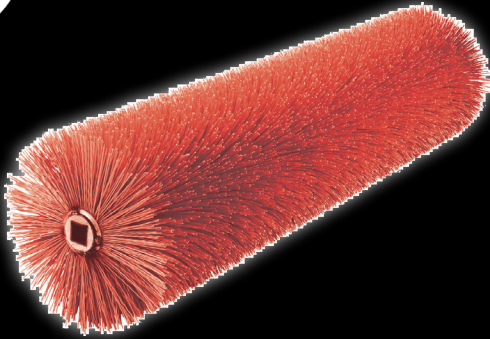


Construction: Superior Steel Wire (Std), Spring Steel Wire (HD), Polypropylene, & Cable Side Brooms available for use in various applications.



STREET & ROAD

EXTENSION BROOMS

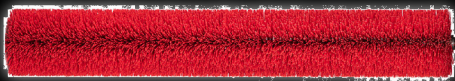


Available in:

- Poly
- Combination
- Multiple Colors

Construction: Poly or Combination filaments that provide a precise agitation pattern required for vacuum sweepers for use in various applications.

CENTER BROOMS



Available in:

- Poly
- Wire
- Combination - 50% Poly / 50% Wire

Construction: Poly, Wire, or Combination filaments provide agitation to loosen compacted debris for pick up on Crosswind sweepers for use in various applications.

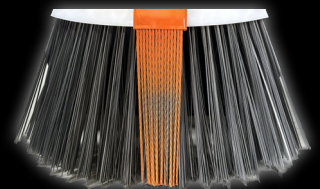
SIDE BROOMS



Available in:

- Standard
- Heavy-Duty
- Poly
- Aggressor

Optional Piranha
Brush Attachment



Construction: Superior Steel Wire (Std), Spring Steel Wire (HD), Polypropylene, & Cable Side Brooms available for use in various applications.

STREET & ROAD



SELECT YOUR SWEEPER

SELECT YOUR BROOM

	4MF, 4MH, 4MW	CJ Broom Badger	CH Broom Badger	Broom Bear H	Crosswind	Eagle F	Pelican	Whirlwind MV	Whirlwind MVS
Standard Tube	7873202	7873212	7873212	7873212	7873208	7873202	7873201	7873203	1134969
HD Tube	7873205	7873336	7873336	7873336		7873205	7873209		
Combo Tube	0710068	7970193	7970193	7970193	7199067	0710068	0710066	1071285	0099266
Strip Brooms	7970068	5713881	5713881	5713881		7970068	7970066		
Mandrel Core	7970077	5713880	5713880	5713880		7970077	7970076		
Standard Side	7873222	7873222	LH 7873221 RH 7873222	7873222	7873222	7873222	7873221	7873221	7873221
HD Side	7873223	7873223	7873223	7873223	7873223	7873223	7873225	7873225	7873225
Poly	1047327	1047327	1047327	1047327	1047327	1047327	0710020	0710020	0710020
Aggressor XR	Call to Verify Part Number by Application								
Aggressor XT									

COMPETITOR BROOMS AVAILABLE UPON REQUEST

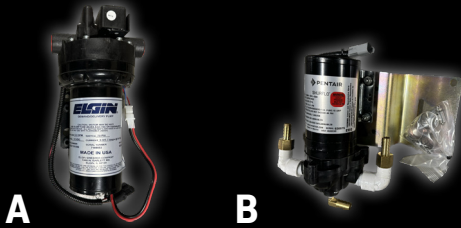




STREET & ROAD

WATER PUMPS

- A** Elgin Part Shown
 - Part # 1101599, Assy, Water Pump
- B** CH Broom Badger Part Shown
 - Part # 151564-91, Assy, Water Pump



A

B

SPRAY NOZZLES

- D** Elgin Parts Shown
 - Part # 1106159, Connector, Straight
 - Part # 1040011, Nozzle, 80 Degree
 - Part # 1106309, Y-Connector



D

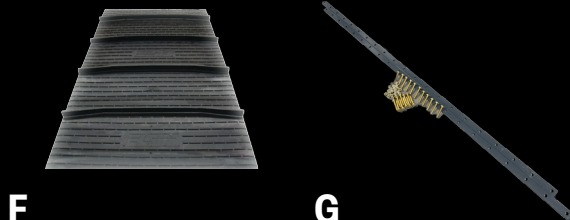
- E** CH Broom Badger Parts Shown
 - Part # 114014-91, Spray Nozzle Tip, Orange
 - Part # 110417-91, Spray Nozzle Tip, Blue
 - Part # 110419-91, Spray Nozzle Tip, Brown
 - Part # 1104027-91, Spray Nozzle Tip, Brass
 - Part # 1104012-91, Gasket Spray Nozzle
 - Part # 114011-91, Spray Nozzle Retaining Nut



E

CONVEYOR BELTS / KITS

- F** Elgin Part Shown
 - Part # 1118971, Belt, Chevron
- G** Elgin Part Shown
 - Part # 1015801, Belt Splice Hardware



F

G

WATER FILTERS

- C** Elgin Parts Shown
 - Part # 1025993, Filer Housing
 - Part # 1025992, Filter Cartridge



C

BEARINGS

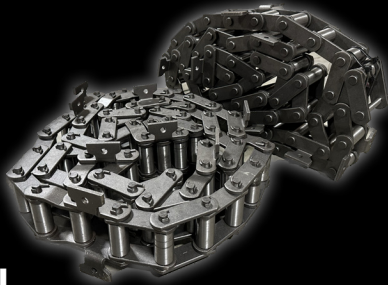
- H** Elgin Parts Shown
 - Part # 5710125, Bearing Flange
 - Part # 1034474, Bearing Upper Roller
 - Part # 1078123, Bearing, Lower Roller
 - Part # 1034473, Bearing



H

ELEVATOR PARTS

- I** CH Broom Badger Parts Shown
- Part # 200029-91, Chain, Conveyor



I

- J** Elgin Parts Shown
- Part # 5711606, Flight Assy
 - Part # 1110486, Flight Rubber

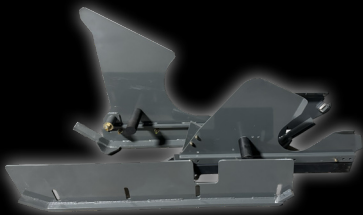
- CH Broom Badger Parts Shown
- Part # 106014-91, Conveyor Wiper Rubber
 - Part # 150287-91, Conveyor Wiper Assy



J

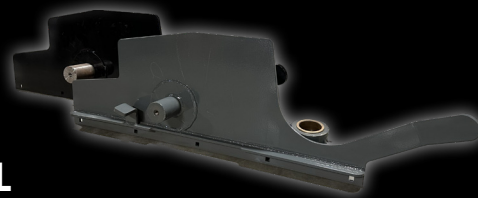
DIRT SHOES

- K**
- Part # 1058964, Dirt Shoe, LH
 - Part #1095995, Dirt Shoe Assy, LH
 - Part # 1120691, Dirt Shoe, LH, 4M



K

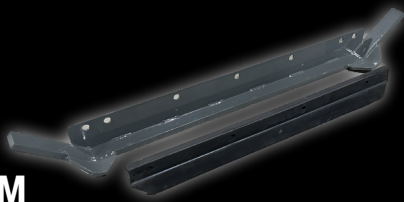
- L**
- Part # 103203-91, Drag Shoe Plate
 - Part # 1137835, Dirt Shoe, LH



L

DIRT SHOE RUNNERS

- M** Elgin Parts Shown
- Part # 1054322, Dirt Shoe Runner
 - Part #1120309, Drag Shoe Two Row



M

- N** Broom Badger Parts Shown
- Part # 103102-91, Drag Shoe Runner
 - Part #1137819, Shoe Runner



N

Many Additional Part Numbers Available.



STREET & ROAD

HOSES & CLAMPS



O

P

- O**
 - Part # 1059362, Hose Pressure
 - Part # 1066223, Hose Suction 11"
 - Part # 1011454, Hose Suction
- P**
 - Part # 1041940, Clamp, Hose
 - Part #1069026, Clamp, Hose

MIRRORS & LIGHTS

- Q**
 - Part # 1104264, Lamp, 4M Console
 - Part # 154347-91, LED Strobe Light Assy
 - Part # 1127417, LED Work Light
- R**
 - Part # 151642-91, Assy, Side Mirror
 - Part # 1082718, Mirror, Unheated



Q

R

FACT

Part failures can cause downtime and sometimes even personal injury.
For optimum reliability, always depend on OEM Parts.



UNDERGROUND UTILITY



24 Hour Online Parts Ordering Available!

MYDEALER

Whether in the office or out in the field you can access your account 24/7 with MYDEALER. This online management tool is designed for your convenience and will allow you the ability to...

- ◇ **Order Parts**
- ◇ **Request Service**
- ◇ **Check Repair Status**
- ◇ **Print Invoices**
- ◇ **View Quotes**
- ◇ **And... MORE!**

Sign Up TODAY!





UNDERGROUND UTILITY

HXX NOZZLES

- A** • Part # 508545-30, HXX Rotating Nozzle #4



A

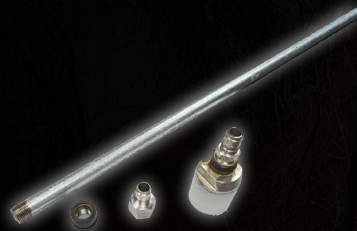
- B** • Part # 508481HDB-30, Ripsaw HD 6.0, Rotating Nozzle
• Part # 508482CG-30, Switchblade Nozzle Ace 6.0
• Part # 508482BD-30, Switchblade Nozzle Duce 6.0
• Part # 508482AA-30, Switchblade Nozzle Quad 4.0
• Part # 508548A-30, HXX Nozzle Rebuild Kit #8



B

DIGGING LANCES

- C** • Part # 500619E-30, Digging Pipe Assy, 1/2" x 8'



C

- D** • Part # 500619R-30, Digging Pipe Assy, HXX



D

HANDGUNS

- E** • Part # 500619F-30, Safety Shutoff



E

- F** • Part # 508656A-30, Washdown Gun 10 GPM 3000 PSI



F

UNDERGROUND UTILITY



FITTINGS

- G** • Part # 20188L-30, Quick Connect Female
- Part # 20188M-30, Male Disconnect



WATER PUMP

- H** • Part # Part #509412A-30, Water Pump Assy, CAT 56AVM, 8GPM



AIR DIGGING

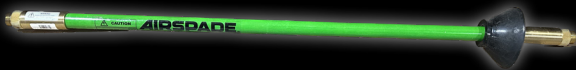
- I** • Part # 511645-30, Airspade Handle Assy, w/Thor



- J** • Part # 511646-30, Airspade 10' L/W Hose w/Thor
- Part # 49209C-30, Airspade 10' L/W Hose w/Chicago (Not Shown)



- K** • Part # 511647-30, Airspade 4' Barrel w/Dirt Shield
- Extensions Also Available



- L** • Part # 510906A-30, 1" X 25' GST II Hose 3000 PSI





UNDERGROUND UTILITY

DEBRIS HOSES

M • Part # 43323-30, PVC -Flex Hose
6" Bulk/Per Ft.



M

N • Part # 509410-30, Debris Hose,
4" x 25'



N

O • Part # 509411-30, Debris Hose,
6" x 22'



O

P • Part # 70404M-30, Hose, Rbr. Red Gum,
8" x 37"



P

Q • Part # 43958B-30, Debris Hose, Red Gum,
8" x 150"

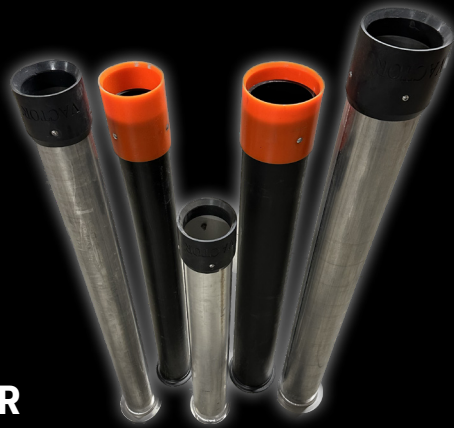


Q

UNDERGROUND UTILITY



- R** • Part # 34766F-30, 6" Aluminum Dig Tube
- Part # 509694-30, 6" Poly Dig Tube
- Part # 511656E-30, 7" Aluminum Dig Tube
- Part # 509696-30, 8" Poly Dig Tube
- Part # 25268Y-30, 8" Aluminum Dig Tube



R

CLAMPS

- T** • Part # 16584-30, 8" Quick Clamp
- Part # 16584F-30, 8" Quick Clamp Wizzy Wig
- Part # 32087-30, 6" Quick Clamp, J-Hook
- Part # 32087D-30, 6" Quick Clamp



T

BANDLOCK & ACCESSORIES

- V** • Part # 42589-30, 4" Band-Lok Gasket
- Part # 42586-30, 4" Band-Lok Clamp



V

DIG TUBES & BOOTS

- S** • Part # 23788L-30, 6" Rubber for Aluminum
- Part # 23788K-30, 8" Rubber for Aluminum
- Part # 510644D-30, 8" Urethane for Poly
- Part # 510644C-30, 6" Urethane for Poly



S

- U** • Part # 46471A-30, 4" Quick Clamp



U

HANDLE

- W** • Part # 25262H-30, 6" Catch Basin Nozzle Handle



W

Many Additional Part Numbers Available.

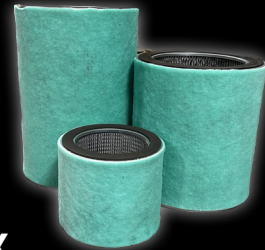
parts@theequipment.com



UNDERGROUND UTILITY

FINAL FILTERS

- X** • Part # 45112DF-30, Filter 14OD X 10ID X 12L
- Part # 1140363BF-30, Filter, 19.63OD X 14ID X 21.5L
- Part # 1140363AF-30, Filter, 19.63OD X 14ID X 28.5L



X

WORK LIGHTS

- Y** • Part # 46494B-30, Kit - Handlight with Charger Cable



Y

- Z** • Part # 70499RA-30, LED Spot Lamp, Round 4"



Z

- AA** • Part # 70499QA-30, LED Flood Light, Square 4"



AA

- BB** • Part # 70499L-30, LED Worklight Betts Flood



BB

FACT

True value doesn't come with a less expensive part.
OEM parts are built to last.



STORM & SEWER



24 Hour Online Parts Ordering Available!

MYDEALER

Whether in the office or out in the field you can access your account 24/7 with MYDEALER. This online management tool is designed for your convenience and will allow you the ability to...

- ◇ **Order Parts**
- ◇ **Request Service**
- ◇ **Check Repair Status**
- ◇ **Print Invoices**
- ◇ **View Quotes**
- ◇ **And... MORE!**

Sign Up TODAY!



***COMPETITOR PARTS AVAILABLE UPON REQUEST**

parts@theequipment.com



Y-STRAINER SCREENS

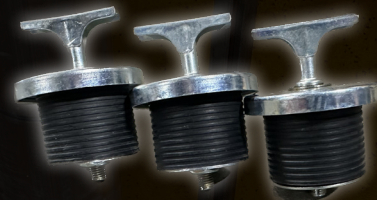
- A** • Part # 41280-30, Screen, 3" SS
• Part # 45803-30, Screen, 2" SS



A

WATER TANK DRAIN PLUGS

- B** • Part # 45731-30, Expansion Plug 2"



B

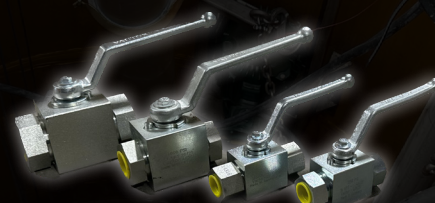
BALL VALVES

- C** • Part # 40030-30, Ball Valve - 1/2" Mini
• Part # 40030C-30, Ball Valve - 1/4" Mini



C

- D** • Part # 40575-30, Ball Valve, 1/2" , FNPT
• Part # 40575J-30, Ball Valve, 1/2" , FORB
• Part # 40576-30, Ball Valve, 1"
• Part # 46581-30, Ball Valve, 3/4"



D

HANDGUNS

- E** • Part # 45109-30, Water Spray Hand Gun
• Part # 508656A-30, Washdown Gun 10 GPM 3000 PSI
• Part # 83915A-30, Waterblast Assy, 3000 PSI, 6', HXX



E

STORM & SEWER



HOSE REELS

- F** • Part # 45929AB-30, Lateral Hose Reel
- Part # 46438ZL-30, Hose Reel Assy w/Hose



F

RELIEF VALVES

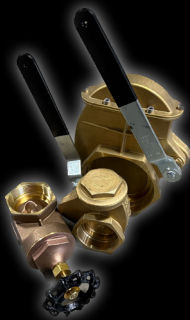
- G** • Part # 40029-30, Relief Valve, Water
- Part # 46688-30, Relief Valve, Baird



G

GATE VALVES

- H** • Part # 40019-30, Valve- Gate 3" Screw Type
- Part # 40019A-30, Valve - Lever Gate 3"
- Part # 40019H-30, Valve - Lever Gate 6"



H

SWIVEL JOINTS

- I** • Part # 40052D-30, Swivel Joint, 1"
- Part # 43947F-30, Swivel Joint, 1.25"
- Part # 46438WA-30, Swivel Joint, 1/2"



I

HYDRANT HOSES

- J** • Part # 81321-30, Hydrant Hose Assy, 2.5" X 25'
- Part # 81321D-30, Hydrant Hose Assy, 2.5" X 25' w/Camlock (Not Shown)

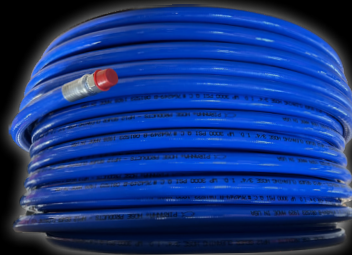


J



RODDER HOSES

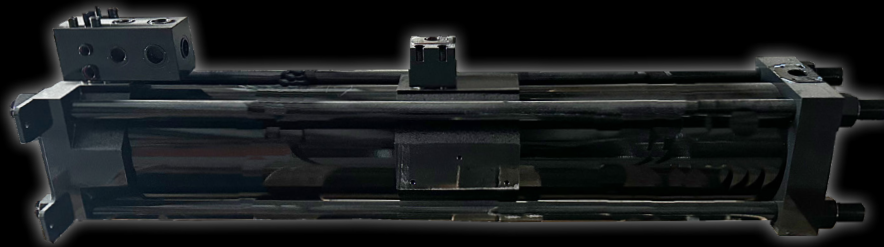
- K** • Part # LL-8/500, Rodder Line 1/2" X 500'
- Part # 48782H5-30, Rodder Line 3/4" X 500'
- Part #48783S5-30, Rodder Line 1" X 500'
- Multiple Sizes Available



K

RODDER PUMPS

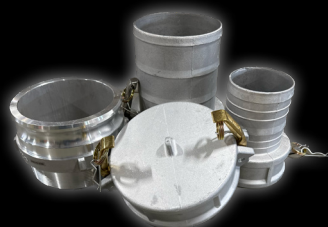
- L** • Part # 62180-30, Rodder Pump Assy (Not Shown)
- Part # 62180AQ-30, Rodder Pump Assy, 80 GPM



L

CAMLOCK FITTINGS

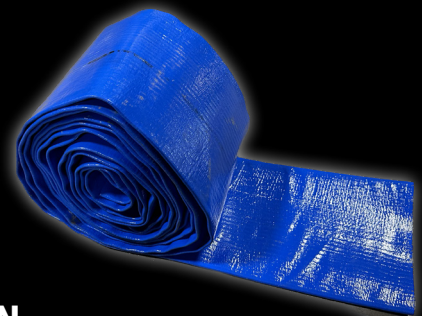
- M** • Part # 46227-30, Camlock Coupler Female, w/Barb, 6"
- Part # 46228-30, Camlock Adapter, Type F, 6"
- Part # 46229-30, Camlock Dust Cap, 6"
- Part # 46248-30, Camlock Coupler Female w/Barb, 4"



M

LAYFLAT HOSE

- N** • Part # 29898-30, Hose, PCV, Layflat, 6"
- Multiple Sizes Available



N



HYDRAULIC FILTERS

- O** • Part # 42431-30, Hydraulic Filter Element, Standard
- Part # 42431A-30, Hydraulic Filter Element, XL
- Part # 70294-30, Filler Breather Assy
- Part # 1099061, Cartridge, Hydraulic Filter
- Part # 514335-30, Filter Element



O

HEAT EXCHANGER

- P** • Part # 44914K-30, Heat Exchanger (No Baffle)



P

INLET SEALS

- R** • Part # 49654-SP, Inlet Seal Assy, 14" x 15"
- Part # 49654A-SP, Inlet Seal Assy, 14" x 16"



R

DOOR SEALS

- Q** • Part # 35594-30, Rear Door Seal
- Multiple Sizes Available



Q

FLOAT ASSEMBLY

- S** • Part # 44388-30, Float Ball, SS, 10"
- Part # 500272A-30, Float Ball Screen, PPE



S



DEBRIS HOSES

- T** • Part # 47392B-30, Debris Hose, 6" X 62"
- Part # 46564D-30, Debris Hose, 8" X 60", Red
- Part # 46564-30, Debris Hose, 8" X 62"
- Part # 46564N-30, Debris Hose, 8" X 60", Yellow
- Part # 46564J-30, Debris Hose, 8" X 74"
- Part # 49236B-30, Debris Hose, 10" X 55", Red



T

- U** • Part # 43958B-30, Debris Hose, 8" x 150" Red Gum



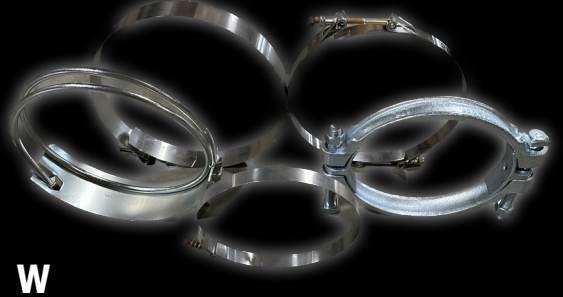
U

CLAMPS

- V** • Part # 16584-30, 8" Quick Clamp
- Part # 16584F-30, 8" Quick Clamp Wizzy Wig
- Part # 32087-30, 6" Quick Clamp, J-Hook
- Part # 32087D-30, 6" Quick Clamp
- W** • Part # 16584-30, 8" Quick Clamp
- Part # 16584F-30, 8" Quick Clamp Wizzy Wig
- Part # 32087-30, 6" Quick Clamp, J-Hook
- Part # 32087D-30, 6" Quick Clamp



V



W



CATCH BASIN NOZZLES

- X** • Part # 25268-30, Nozzle, C/B 8" X 78"
- Part # 25268C-30, Nozzle, C/B 8" X 66"
- Part # 51165630, Nozzle, C/B 7" X 54"



X

ALUMINUM PIPES

- Y** • Part # 25637C-30, 8" X 36" Pipe Assy
- Part # 25637M-30, 8" X 48" Pipe Assy
- Part # 25637-30, 8" X 60" Pipe Assy
- Part # 25637D-30, 8" X 72" Pipe Assy



Y

HIGBEE TUBES

- Z** • Part # 89957A-30, Nozzle Assy, C/B, Higbee, 8" x 36"
- Multiple Sizes Available



Z

HANDLE

- AA** • Part # 25262H-30, 6" Catch Basin Nozzle Handle
- Part # 25268K-30, 7" Catch Basin Nozzle Handle (not shown)
- Part # 25268J-30, 8" Catch Basin Nozzle Handle (not shown)



AA

Many Additional Part Numbers Available.



ROVER X

- A** • Part # E-440-0110-00-SP, Cable Connector Rover X



A

- B** • Part # E-561-0120-04-SP, Front Housing Complete, RCX90 V04/72



B

- C** • Part # E-562-0130-00-SP, Remote Device Rover (Programming Required)



C

WHEELS

- D** • Multiple Quick-Change Wheel Options Available.



D

STORM & SEWER



SAT II

- E • Part # E-440-0118-01-SP, Cable Connector to Push Rod RAXSAT300



E

- F • Part # E-537-0200-01-SP, Connector Gore OG Push Rod



F

VERISIGHT PRO+

- G • Part # E-V-ASS-003-950, VSP+ Rod End Coupler



G

- H • Part # E-V-PCB-003-624, VSP+ Sonde PCB (Rev 1A)



H

ALL MODELS

- I • Part # E-PRE-0000-01, Main Pressurization Kit
- Part # 88100Z, CO2 Canister



I

Many Additional Part Numbers Available.

parts@theequipment.com



STORM & SEWER

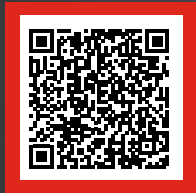
NOZZLES

REVOLUTION

A • Nozzles Available in Multiple Sizes



A



SCAN TO LEARN MORE!

REAPER

B • Nozzles Available in Multiple Sizes



B



SCAN TO LEARN MORE!

INDUSTRIAL CLEANING

C & D • Nozzles Available in Multiple Sizes



SCAN TO LEARN MORE!



C



SCAN TO LEARN MORE!



D

STORM & SEWER



TRACTION

E • Nozzles Available in Multiple Sizes



2024 KEG CATALOG
SCAN TO LEARN MORE!



RAMBO

F • Nozzles Available in Multiple Sizes



TORPEDO

G • Nozzles Available in Multiple Sizes



DID YOU KNOW?

FOG - Fats, Oils, Grease can be harmful on your pipes and can easily be eliminated with water jetting.

Pipe cleaning and sewer maintenance should be completed every 18-22 months.

By utilizing pressurized water to break away debris with jetting, you can safely flush out unwanted material.

Properly jetted nozzles propel forward while directing the flow backward without damaging pipes or using harsh chemicals.



OMG

H • Nozzles Available in Multiple Sizes



H

FLOOR CLEANERS

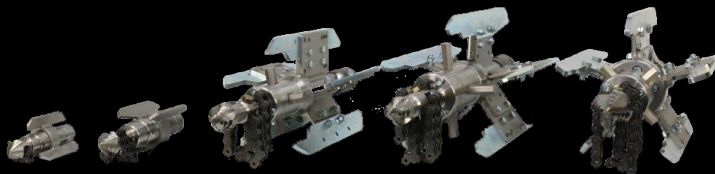
I • Nozzles Available in Multiple Sizes



I

CHAIN CUTTERS

J • Nozzles Available in Multiple Sizes



J



CONTACT US FOR AN
ON-SITE DEMO TODAY!

STORM & SEWER



AGITATOR

K • Nozzles Available in Multiple Sizes



K

WEDGE

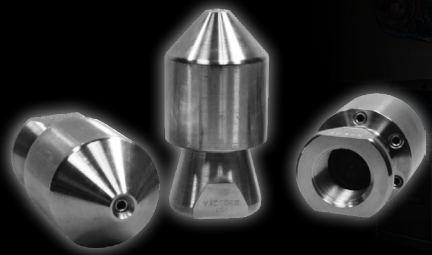
M • Nozzles Available in Multiple Sizes



M

STANDARD PENETRATOR

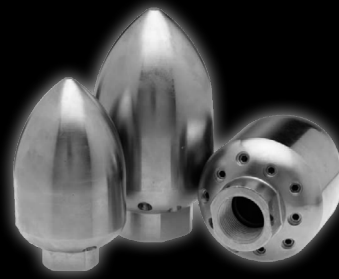
O • Nozzles Available in Multiple Sizes



O

SUPER FLUSHER

L • Nozzles Available in Multiple Sizes



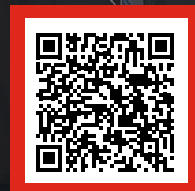
L

STANDARD SANITARY

N • Nozzles Available in Multiple Sizes



N



VECTOR OEM
NOZZLE CATALOG

Many Additional Nozzles Available.

parts@theequipment.com



STORM & SEWER

PIPE REPAIR

QUICK-LOCK REPAIR SLEEVES

- P** • Sleeves Available in Multiple Sizes



P



FACT

Sewers can cause disease and can kill. Always practice safe hygiene and use the right equipment for the job.





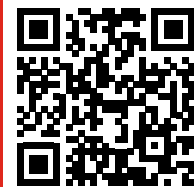
24 Hour Online Parts Ordering Available!

MYDEALER

Whether in the office or out in the field you can access your account 24/7 with MYDEALER. This online management tool is designed for your convenience and will allow you the ability to...

- ◇ **Order Parts**
- ◇ **Request Service**
- ◇ **Check Repair Status**
- ◇ **Print Invoices**
- ◇ **View Quotes**
- ◇ **And... MORE!**

Sign Up TODAY!





TOOLS

A • Part # 20836-30, Hydrant Wrench



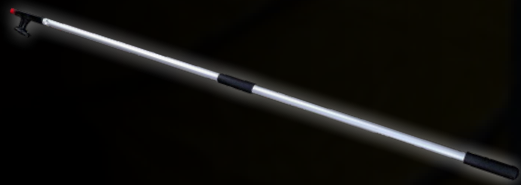
A

B • Part # 34878A-30, 36" Lid Lifter Hook



B

C • Part # 49443A-30, Reach Pole, 5'



C

D • Part # MSRH-3, 39" Flat Manhole Hook



D

E • Part # 52846-30, 36" Flexible Hose Guide Assy.



E

F • Part # FE-61, 1" X 6" 4 Finned Nozzle Extensio



F

TOOLS



- G** • Part # WNE-61, 1" X 6" Wire Nozzle Extension



G

- H** • Part # SAMR-1, Upper Manhole Roller Guide



H

- I** • Part # CO-24N, Plexy-Protection Grill (For Jetting Only) w/Nylon Roller
- Rollers Available Separate



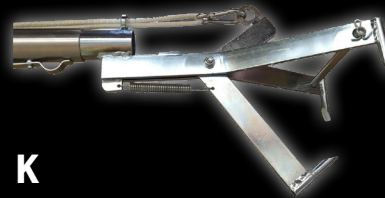
I

- J** • Part # SMR-28N, Aluminum Roller Grill Manhole Safety Cover
- Rollers Available Separate



J

- K** • Part # CRW-1, Grabber Head Attachment



K

- L** • Part # GWCT-(12)(16)(24), Claw Telescopic Grabber



L



TOOLS

M • Part # STD-24, Fiberglass Poles.
Set of 3

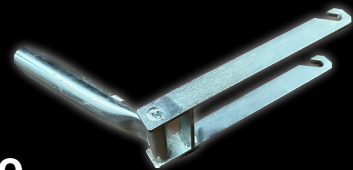
• Individual and Heavy Duty
Poles Available.



M

N • Part # 4PG-1, 4 Pronged Debris
Grabber

O • Part # ECL-1, Envirotyp Lifting Hook

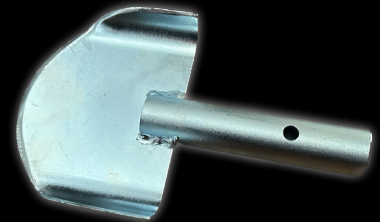


N

O

P • Part # HG-1, Hose Grabber

Q • Part # LC-9, Grease Log Chopper

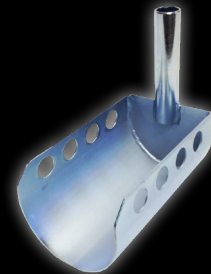


P

Q

R • Part # PS-1, Catch Basin Spoon

S • Part # SC-(4)(6)(8)(10)(12), Scoopa
for Fiberglass Poles



R

S

TOOLS



T • Part # SHT-1, Opposite
Hose Grabber

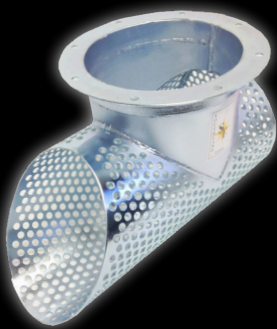


SOUTHLAND TOOL
CATALOG

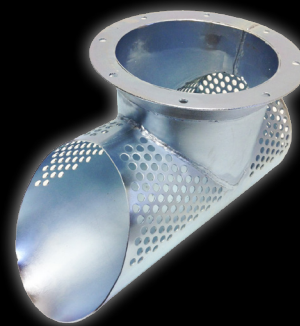
U • Part # DMB-1-24 (6)(8),
Drop Manhole Bridge Kit



V • Part # BT-8, Vac-Trap for 8" Flange



W • Part # BT-8S, Vac-Trap Grit Catcher
for 8" Flange



Tools Available in Multiple Options and Sizes.

parts@theequipment.com



TOOLS

- X** • Part # HYH-(6)(8), Hydro-Vac Tube Holder w/ 2 Handles
- Y** • Part # HYH-(6)(8)-VS, Vector Style Tube Holder w/ Large Handle
- Part # HYH-(6)(8)-WH, Vector Style Tube Holder w/ Adjustable Hook Type Clamp (Not Shown)



X



Y

FACT

Using the proper tools ensures operator safety and productivity.



REFUSE & RECYCLING



DRIVEN FORWARD





SNOW & ICE



A&H BODIES



Region's Premiere Truck Equipment Upfitter

Snow Plows • Salt Spreaders • Liquid Systems • Trailer Tow Packages • Lift Gates • Ladder Racks • Air Compressors • Emergency Lighting & Custom Lighting • Rear Vision Cameras • Dump Inserts • Body Vibrators • Generators • Tool Boxes • Headache Racks • Custom Fenders • Leaf & Chipper Boxes • Hydraulic Systems • Hoist Systems • Flat Beds • Stake Bodies • Service Bodies • Refuse Upfits • Loader Cranes • Tarp Systems • Heated Dump Bodies • Custom Graphics • Lift Axles (Steerable & Non-Steerable)

From tire chains and tarp systems to lift gates and hydraulic systems, A&H Equipment Company has the products you rely on for optimum performance.



Municipal • State • Contractors • Landscapers • Education • Airport



ADDITIONAL PRODUCTS

TARCO[®]



STEPP MFG
ASPHALT MAINTENANCE EQUIPMENT



Sonetics



Madvac[®]
COMPACT SWEEPERS & VACUUMS

CONTACT US



For Parts Orders Call Today!

800.753.7566

*Press 2 for Parts

Email us at:

parts@ahequipment.com

*Please remember to include your unit serial number (if available) with email requests.

**To Schedule a Demonstration,
Scan the QR Code Below.**



A&H EQUIPMENT

ZELIENOPE • SOMERSET • HARRISBURG



How Was Your Experience?

Scan your closest location QR code above to provide us with your feedback.

800.753.7566

parts@ahequipment.com

ahequipment.com

