

# QUICKVIEW AIR HD

RAPID, COMPLETE  
SEWER ASSESSMENT



 **ENVIROSIGHT**

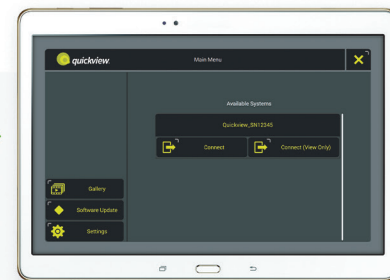
# INSTANT INSIGHT ABOUT SEWERS

Quickview airHD's high-power zoom optics and focused illumination look deep into sewer lines from a manhole to see if they need repair, cleaning or further inspection.

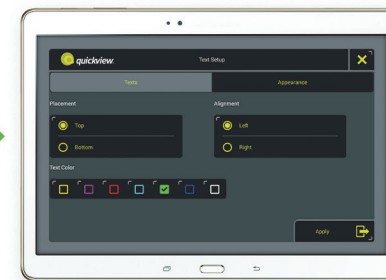
With the insight Quickview delivers, you'll make better maintenance decisions and use resources more effectively.



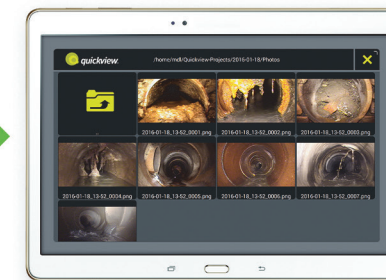
Operate with real-time video and touchscreen controls.



Connect via Wi-Fi.



Annotate your footage.



Review saved assessments.

**CITY**

- Identify and prioritize maintenance issues.
- Avoid confined space entry.
- Inspect hard-to-reach areas.
- Respond to emergency callouts.
- Improve sewer cleaning efficiency.

**CONTRACTOR**

- Survey pipe condition before bidding services.
- Document successful completion of work.

**D.O.T.**

- Assess storm drain and culvert condition.



## CENTER

To adjust camera height in-manhole, push against the standoff's spring; a ratchet will hold your position.



## ILLUMINATE

With the camera encircled by focused light, you can see hundreds of feet into pipes.



## TILT

Using touchscreen controls, remotely adjust camera tilt to achieve optimal alignment.



## MEASURE

An optional range-finder accessory measures distance-to-target with the push of a button.

6-48" pipe dia.

max. 400' view range





## SYSTEM COMPONENTS

- camera head
- app (tablet not included)
- pole with standoff
- bipod
- battery (2)
- charger
- case

## SPECIFICATIONS

### video system

imager . . . . . 1/2.8-type CMOS  
 zoom . . . . . 360x (30x optical, 12x digital)  
 resolution . . . . . 1280x720 pixel (2.38 MP)  
 functions . . . . . zoom  
 . . . . . focus (auto/manual)  
 . . . . . shutter (auto/manual)  
 FOV (hor.) . . . . . 63.7 (wide) - 2.3 (tele) deg  
 sensitivity . . . . . 1.4 lux

### illumination

system . . . . . four LED/reflector pairs  
 type . . . . . coaxial, collimated  
 reflector type . . . . . proprietary

### camera head

connections . . . . . 4-pin aux port  
 depth rating . . . . . 10' (3m)  
 construction . . . . . aluminum  
 sensors . . . . . temp, pressure, incline

### wireless system

Wi-Fi standard . . . . . IEEE 802.11b/g/n  
 frequency range . . . . . 2.400–2.483 GHz  
 operating channels . . . . . 1–11

### centering support

height adjustment . . . . . 18.9" (480mm)  
 pipe dia. . . . . 6–48" (DIN 150–1200)  
 mechanism . . . . . ratcheted gas spring

### battery/charger

battery capacity . . . . . 3.4 A-hr.  
 battery charger . . . . . mains power

### pole/bipod

length (collapsed/extended) . . . . . 4'/16'  
 stabilization . . . . . hands-free bipod

### app

OS . . . . . Android, iOS, Windows

