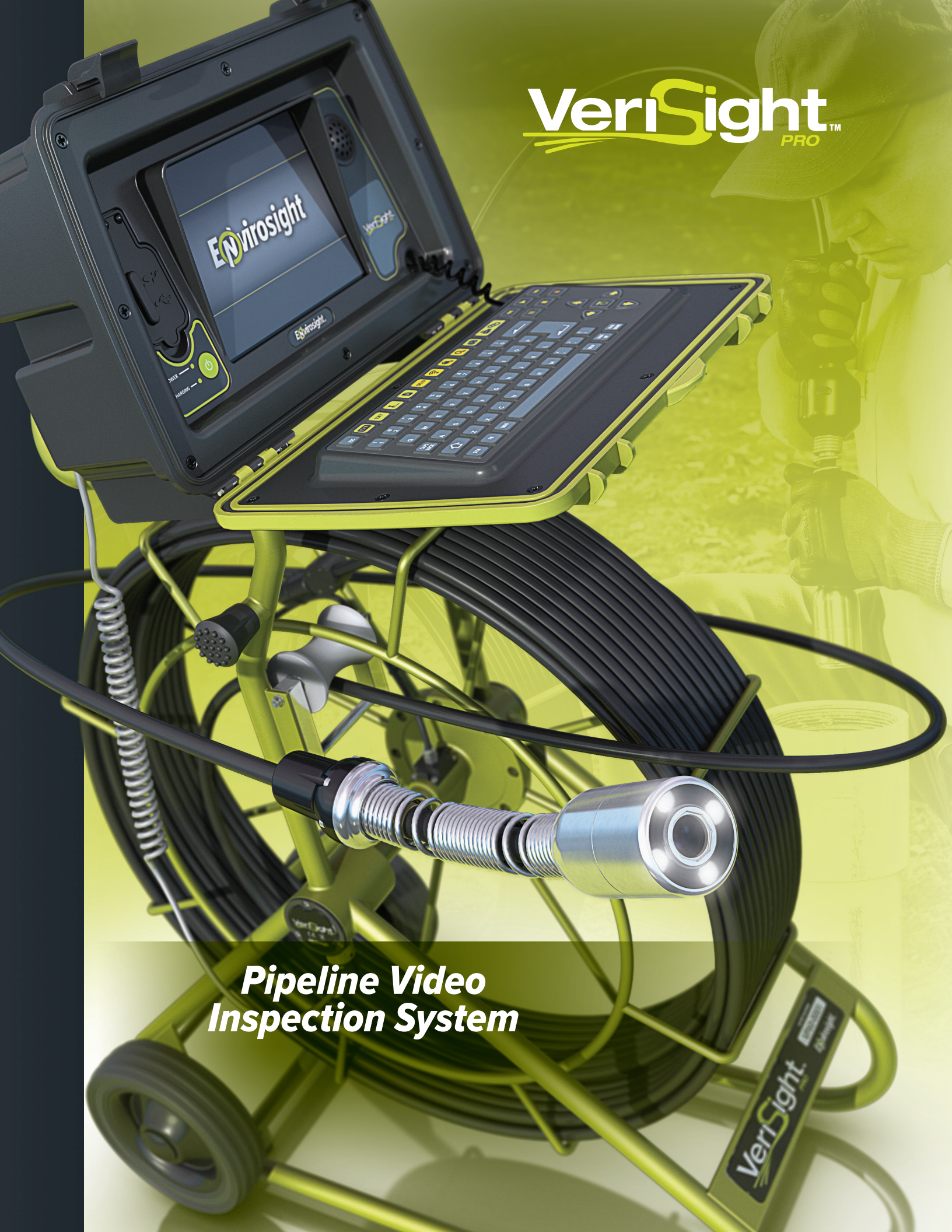


VeriSight™
PRO



***Pipeline Video
Inspection System***

VeriSight™
PRO



VeriSight[™] PRO

Offloading video, images and data is as simple as plugging in a USB stick or SD/SDHC card.



¹ Observation entry and reporting modules are available as options.

VeriSight Pro's self-leveling head keeps video upright, so you can maintain your orientation.

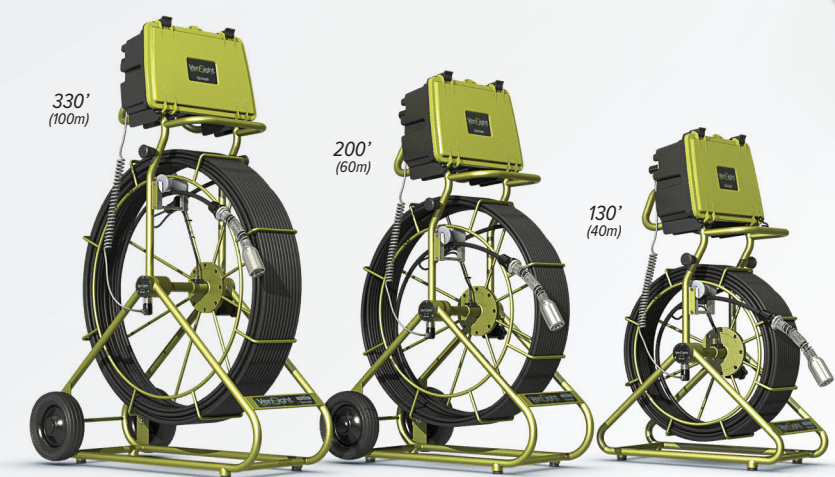


Total Inspection Productivity

VeriSight Pro has everything you need to inspect pipes, document your findings, and generate reports for on-site delivery*. It captures detailed footage under challenging conditions, and its advanced interface offers robust tools—including observation entry and reporting options—and has USB and SD media bays for easy offload of data, video, images and reports.

Reel

Welded steel construction with a protective powder coat finish mean VeriSight Pro's reel stands up to the punishment of daily field use. It's sealed slip ring ensures reliable operation, while measurements from the integral distance counter appear onscreen. The VeriSight Pro reel is available in three sizes:

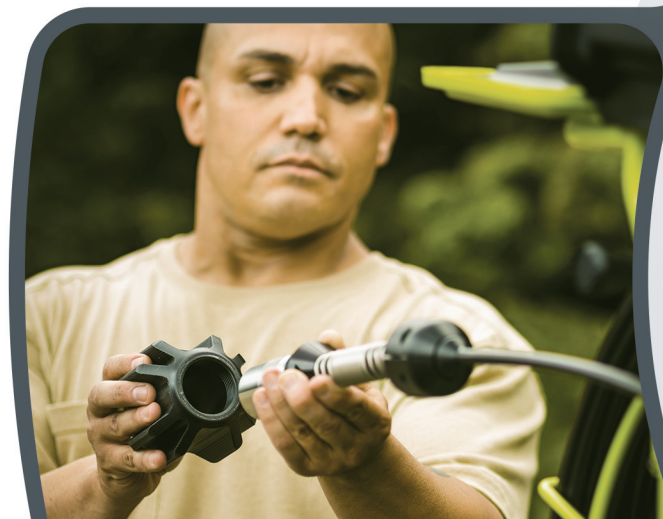


Controls

VeriSight Pro's interface displays real-time footage on an 8" LCD, records up to 90 hours of video to internal memory, and offers the option to enter observation data for upload directly to WinCan. With its customizable interface, you can zoom video 3X, capture still images, enter up to 16 pages of text, browse thumbnail galleries, and select among several available languages. Housed in rugged ABS plastic with an IP54 rating, the controller runs off mains power, vehicle power, or an internal rechargeable 6-hr battery.

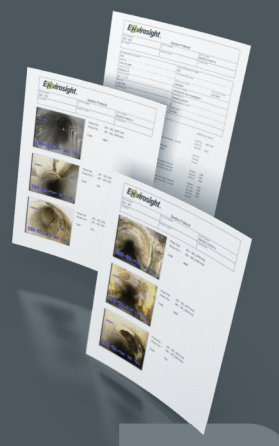
Camera

VeriSight Pro's self-leveling camera captures crisp color footage from pipes 2" in diameter and larger. LED lamps deliver variable-intensity, shadowless illumination adjustable to 12,500 lux (at 6'). The camera's stainless construction withstands harsh conditions, and its unique spring facilitates navigation through bends and P traps. The signal from its tri-band sonde can be picked up by most any locator.

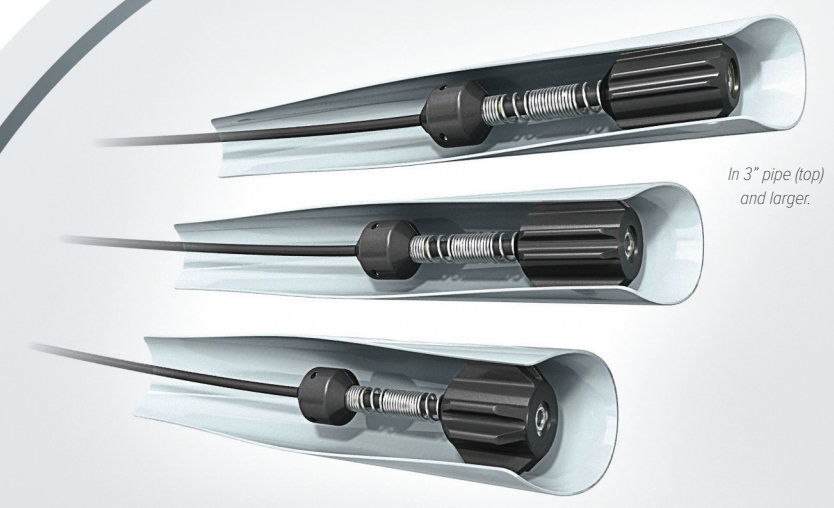
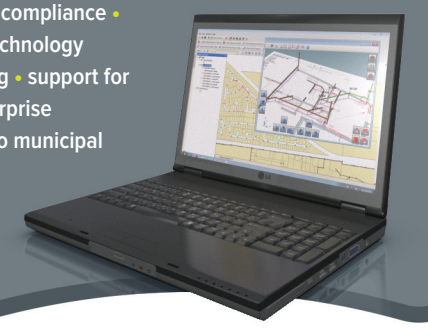


Data Entry & Reporting

VeriSight Pro is the only push camera available with optional data entry and reporting capabilities. With these options, you can enter standards-compliant observations using onboard defect catalogs, and then generate reports (right) and save them to USB media. Imagine—your client gets a deliverable before you leave the job site!



You can also export observation data seamlessly to WinCan software (sold separately) and benefit from: database capabilities • PACP and LACP compliance • GIS integration • advanced technology modules • enhanced reporting • support for network installation and enterprise databases (Oracle, SQL) • links to municipal apps (ArcGIS, Cartegraph, CityWorks, GBA, Hansen, Maximo)



Though VeriSight Pro inspects pipes as small as 2", you can optimize your view in lines 3" and larger using the supplied adapter kit (includes three centering devices, maneuverability collar, and wrench for quick installation).



Functionality At Your Fingertips

Capture Footage. Grab MPEG video and JPEG images, and zoom up to 3X on video.

Enter Observations. Use optional data-entry module to log inspection findings.

Review Footage. Organize videos and images in folders, then find them using the thumbnail gallery. Review media using standard controls.

Generate Reports. Use optional reporting module to generate an inspection report, then transfer it to USB media for on-site delivery.

Offload Data. Copy video, images and data to USB or SDHC media for easy transfer to PC and seamless integration with WinCan's reporting and querying capabilities.

Write Screen Text. Type and store up to 16 pages of onscreen text. Customize text color, position and background color.

Control Hardware. Set sonde frequency, adjust illumination, and zero/offset footage.

Configure Preferences. Set language and date/time; establish file formats and naming conventions; adjust camera parameters; choose interface theme and power-saving scheme; update firmware.



Use the VeriSight Pro control unit to view, record and annotate inspection footage from any composite video source.

System

video format selectable NTSC or PAL
battery 6-hour lithium-ion
charging mains power (100-240 Vac) or vehicle power (12 Vdc) using supplied adapters

Controller

display 8" TFT LCD (800×600 pixels)
keyboard full QWERTY membrane keyboard with function keys and navigation pad
video recording MPEG4 (WinCan compatible)
image capture JPEG (live or from recorded video)
text overlay 16-page (selectable text/background colors)
internal memory 16 GB (expandable to 128 GB)
external media SDHC and USB 2.0
language support English, Spanish, French
connections power, reel
environmental rating IP54
weight 6.6 lb (3kg)
size 17.1" × 9.8" × 5.5" (435 × 250 × 140 mm)

Camera

imager 1/4" color CCD with DSP
effective pixels 512×582
resolution 470 HTVL
sensitivity <1.0 lux
aperture / field of view F2.5 / 75 deg
image orientation auto-leveling
size 1.61" (41 mm) dia.
illumination system 4 LED
illumination intensity adjustable (up to 12.5K lux at 6")
construction stainless steel
pipe compatibility 2" (50 mm) and up
sonde 33 kHz, 512 Hz, 640 Hz (selectable)

Reel

construction welded steel
finish powder coat
distance counter units feet, meters
controls reel brake, reel lock

130' (40 m) reel

weight / height 33 lb. (15 kg) / 24.4" (620 mm)

200' (60 m) reel with wheels

weight / height 44 lb. (20 kg) / 35.0" (890 mm)

330' (100 m) reel with wheels

weight / height 66 lb. (30 kg) / 37.8" (960 mm)



System Components

- push rod reel
- illuminated, self-leveling color camera with sonde
- control unit with internal battery
- reel-to-controller cable
- car power adapter
- mains power adapter
- pipe adapter kit
- 8 GB USB drive
- components case

Options

- observation entry module
- reporting module
- composite video input pigtail
- SD/SDHC card for data storage
- replacement camera windows
- roller skids (below)



Envirosight LLC

www.envirosight.com

(866) 936-8476 • (973) 252-6700

111 Canfield Ave, Unit B3
Randolph, NJ 07869

Worldwide Sales & Service